



TOKYO UNIVERSITY OF FOREIGN STUDIES



TOKYO UNIVERSITY OF FOREIGN STUDIES

TEL +81(0)42-330-5111 FAX +81(0)42-330-5140
3-11-1 Asahi-cho, Fuchu-shi, Tokyo 183-8534 JAPAN
<http://www.tufs.ac.jp/english/>

TOKYO UNIVERSITY OF FOREIGN STUDIES

Contents

- Message from the President..... 1
- TUFS Grand Design..... 2
- Top Global University..... 4
- Organization Chart..... 6
- Academic Departments..... 7
- Partner Institutions..... 8
- Information for International Students.....10
- Education/Research Projects.....11
- History.....12
- Access to TUFS.....13

Message from the President



President, Tokyo University of Foreign Studies
Hiroataka TATEISHI

These days, developing “global human resources” is being spoken about in various areas of industry, government, and academia. After entering the 21st century, the borderline between domestic and overseas markets has disappeared, people and objects move dramatically across national borders, and globalization is progressing. With the economics, societies and cultures of various regions of the world being engulfed in globalization, and in order to deal effectively with such situations, it is necessary to view these situations from above, like a bird’s-eye view. Global human resources have the abilities to accurately see these situations in their entirety with a broad, global view, and that is why they are needed.

Tokyo University of Foreign Studies vows to send out personnel with high skills in language usage, and deep knowledge of cultures and societies of various regions of the world, and we believe that they have capabilities that contribute to forming “grand design” of globalization. For example, our predecessor, the Bansho Shirabesho, an institution for research and education of Western academics, established at the end of the Edo period by the shogunate, engaged in translations of diplomatic documents. Thus, Tokyo University of Foreign Studies, has developed global human resources, who have performed on an international scale for the past 150 years.

We believe that distinguished global human resources have skills such as self-direction, self-initiation, and the mentality to challenge. Tokyo University of Foreign Studies will assist students in acquiring the above factors through various academic and extra-curricular activities. Moreover, students will graduate with a vast sense of creativity and critical thinking, and then become multilingual global citizens, actively working in various parts of the world.

Being the country’s only national university with “foreign studies” within its name, and being a distinctive university that specialises in humanities and sociology, we at Tokyo University of Foreign Studies aim to steadily progress towards “accumulation of world knowledge” and “interaction with the global society.” We believe that our approach is placed well in today’s global era.

Think and Act Globally and Locally!



Toward Becoming a Base University for Education and Research that Pioneers the Future of the Global Society Era

Tokyo University of Foreign Studies



GRAND DESIGN

1. Base for Higher Education on Languages, Cultures and Societies of Various Regions of the World.

1. Foster human resources with rich education on languages, cultures and societies of various regions of the world and perspectives suitable for the global society era.
2. Train high-level professionals who can respond to the diverse needs of the global society era and demands for social and international contribution.
3. Foster specialised researchers who can conduct leading research on languages, cultures and societies of various regions of the world and on a globalized world.

2. Base for Leading Interdisciplinary Research on Languages, Cultures and Societies of Various Regions of the World.

1. Advance individual research on languages of various regions of the world, construct linguistic theories based on comparative research of multiple languages, and apply the findings to language education.
2. Advance individual research on cultures and societies of the world, and pioneer joint cross-disciplinary research.
3. Advance domestic and international joint research on languages, cultures and societies of various regions of the world, especially in Asia and Africa, and collect research data and publish them in academic press.

3. Global Base for Japanese Language Education and Research.

1. Be a leading Japanese language education provider as a domestic and international model and foster Japanese language educators.
2. Advance Japanese language education and research that are original in both theory and practice.
3. Enhance consulting capabilities for Japanese language education institutions inside and outside Japan.

Toward a 'Base University'

1. Develop Social Collaboration Inside and Outside Japan.

1. Advance international and social contributions making use of the University's unique expertise.
2. Make social contributions that lead to Japan becoming a multilingual and multicultural society.
3. Provide lifelong education and continuing education.
4. Advance industry-academia-government collaboration by making use of the University's intellectual assets.

2. Promote More Sophisticated Education and Research through Collaboration among Domestic and Foreign Universities.

1. Strategically advance education, research and joint projects through collaboration with domestic and foreign universities and research institutions.
2. Promote overseas study and training.
3. Improve systems in order to increase intake of international students.

3. Lay Foundations as a 'Base University'.

1. Strengthen financial foundations with an independent university fund and introduce outside capital to the university, etc.
2. Develop a state-of-the-art information infrastructure.
3. Develop strategic public relations for various university projects.

4. Provide a Rich Campus Life.

1. Realize a 'multilingual, multicultural campus' where Japanese and international students cooperate and study together.
2. Establish a multi-faceted student support system for study, employment, healthcare and daily life aspects.
3. Establish fulfilled education and campus life through collaboration with students.
4. Strengthen domestic and international networks of graduates and alumni.



TUFS TOP GLOBAL UNIVERSITY PROJECT connects resources worldwide

From World to Japan and From Japan to World

TUFS has been selected as one of the 'Top Global Universities' in 2014. The funding is provided by the Ministry of Education, Culture, Sports, Science and Technology; MEXT (Funding Type B: Toward Globalization). We envision ourselves as a 'key network university that connects worldwide resources, from World to Japan and from Japan to World'.



TUFS Future Model

- An University which develops multilingual, competent Global Resources
- An University which enhances Japan's Global Presence
- A Provider of Consulting Service on Globalization of Japanese Universities

TUFS Three Main Targets of the Project

Developing Multi-lingual Global Resources

- 'Joint Education Program'
- Study Abroad 200%+ Double Up the Intake
- Transparent Evaluation Model centered on foreign languages acquisition
- 'TUFS Quarter System' that enables individually tailored and forward-planned study
- Multilingual Teaching Curriculum

Enhancing Japan's Global Presence

- To set up 'Global Japan Office' in worldwide locations
- Enhanced Japanese language program to be rolled out across the whole university

Consulting Service Provider on Globalization of Japanese Universities

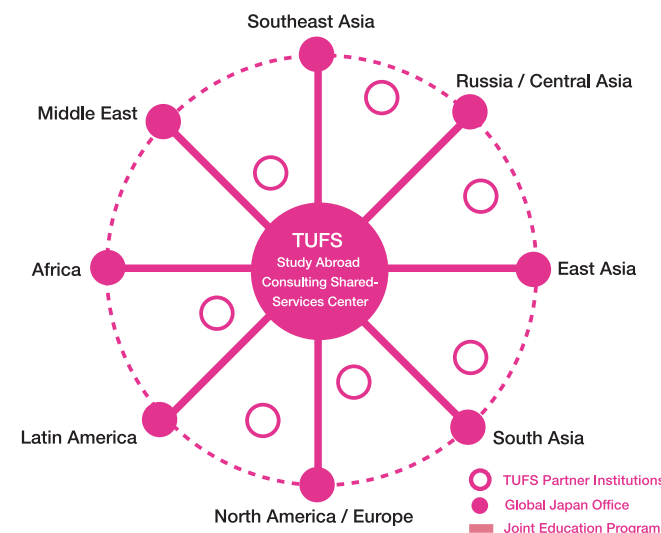
- Usage of 'TUFS Study Abroad Consulting Shared-Services Center'
- Shared usage of 'Global Japan Office'

TUFS Global Japan Office

TUFS will establish 'Global Japan Offices' at key overseas partner institutions and the offices will provide consulting services with a special focus on 'Japanese-language education and Japanese Studies' area.

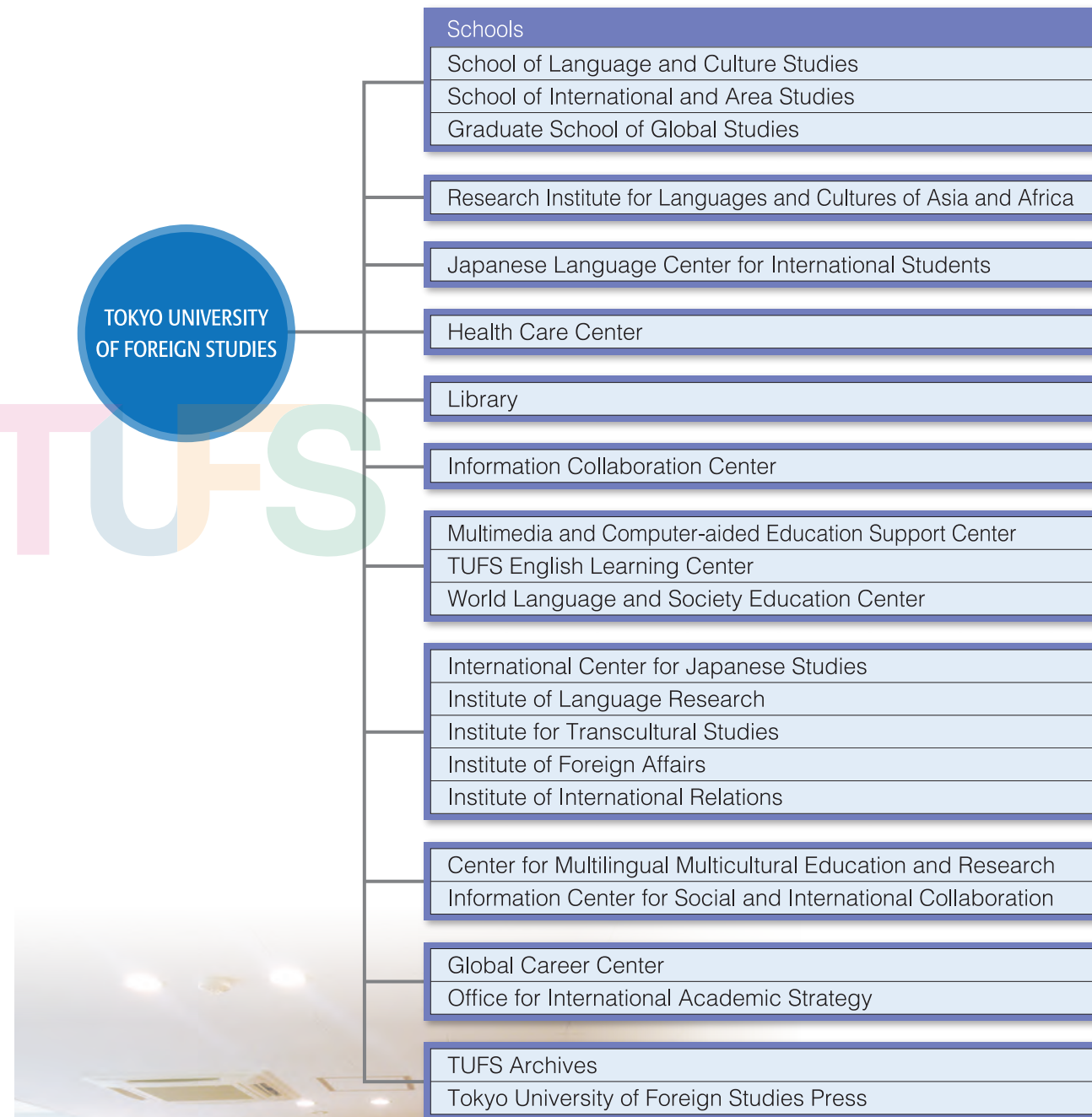


Global Japan Offices will have these functions:



1. Run Japanese-language and Japanese studies classes and seminars
2. Coordinate the Joint Education Program
3. Arrange internships for TUFS students with a focus on Japanese-language education
4. Arrange volunteering activities for TUFS students
5. Provide consulting services for Japanese students studying at external educational institutions
6. Provide consultation for local students interested in studying abroad in Japan

Organization Chart



Academic Departments

Graduate Program: Graduate School of Global Studies

Graduate program began in 1966 as a Master's Program in Foreign Language Studies. In 1992, the program was redesigned and it expanded into the Master's and Doctoral Programs in Area and Culture Studies, thus turning the graduate program at TUFS into a program that encompasses not only foreign language studies but also studies of regions and cultures. In 2009, TUFS renamed it the Graduate School of Global Studies. Primary fields of research in the graduate program are:

1. Language and Culture Studies
2. Applied Linguistics
3. Area and International Studies
4. International Cooperation Studies

Undergraduate Program: School of Language and Culture Studies / School of International and Area Studies

Undergraduate program of TUFS provides students with deep understanding and knowledge of languages, cultures, and societies found in various regions of the globe, and it nurtures their ability to think critically and express their own ideas articulately. In order to achieve this goal, each student of the two Schools is required to choose a major from amongst twenty-seven languages grouped into fourteen areas, and studies his/her major language and basic area studies in their first and second year. In the third and fourth year, students study in specialized education courses, which are offered by both Schools. Each School has three courses:

- School of Language and Culture Studies
- (1) Language and Information Studies
 - (2) Applied Language and Communication Studies
 - (3) Culture and Literary Studies

- School of International and Area Studies
- (1) Area Studies
 - (2) Contemporary Global Studies
 - (3) International Relations

Research Institute for Languages and Cultures of Asia and Africa

The Research Institute for Languages and Cultures of Asia and Africa (ILCAA, or AA-ken) is an affiliate of TUFS and conducts research activities with the following three missions:

- (1) Conducting collaborative research projects
- (2) Processing, editing, and disseminating data on the languages and cultures of Asia and Africa
- (3) Training junior scholars through joint research, workshops, and seminars



Japanese Language Center for International Students

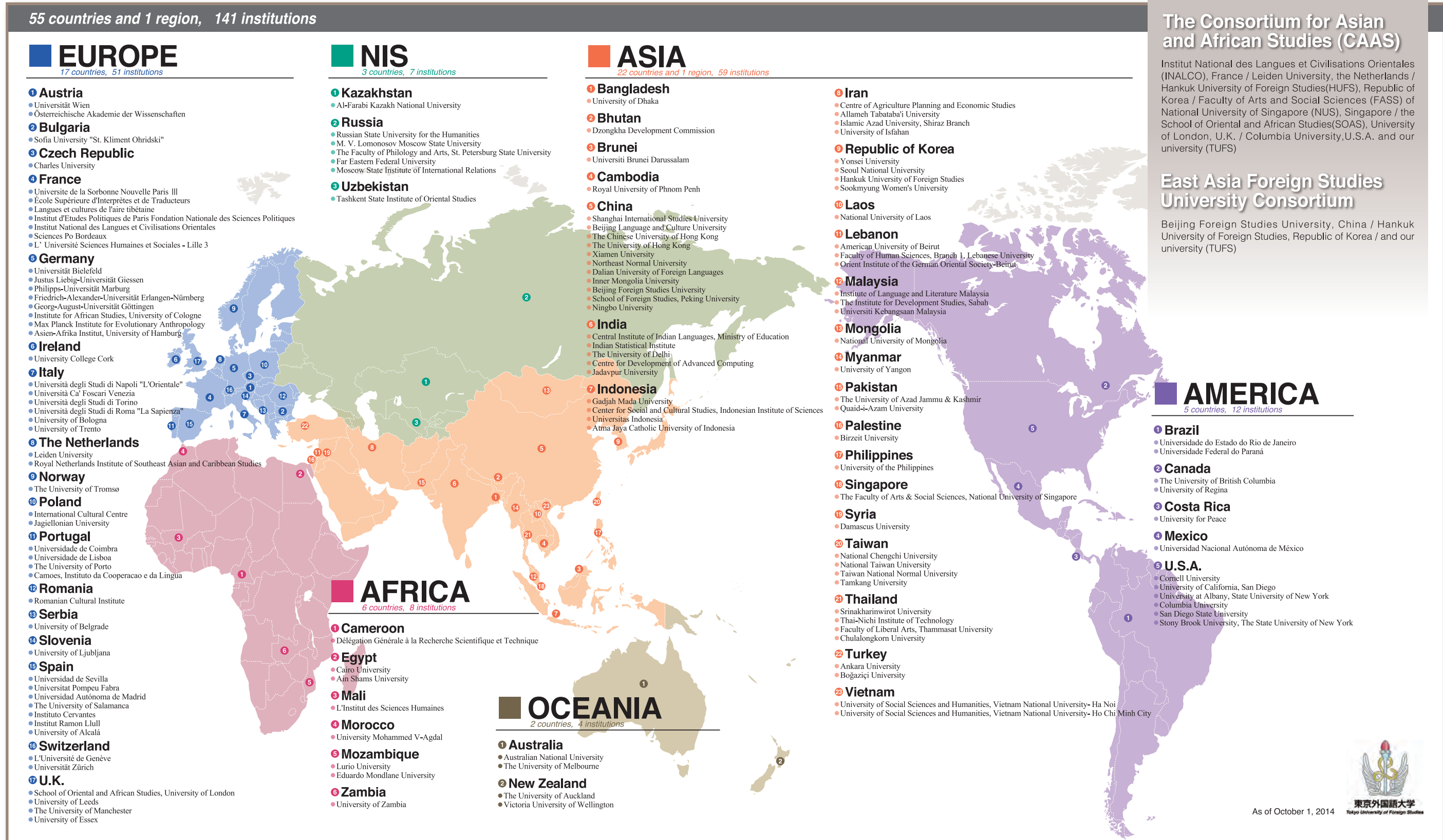
JLCTUFS (Japanese Language Center for International Students), which celebrated its 40th anniversary in 2010, is one of the largest Japanese language educational institutions, which seeks global presence in the studies of Japanese language education. JLCTUFS accepts international students who are recipients of government scholarships from the Ministry of Education, Culture, Sports, Science and Technology and those from schools with whom TUFS has formed an exchange partnership.



Partner Institutions

TUFS has established relationships with many partner institutions around the world to enhance the educational opportunities available to outgoing and incoming exchange students. With most of our partner institutions, we also have concluded Fee Waiver Agreements that allow students to study abroad without having to pay any additional tuition fees

on top of their regular fees at their home universities, and Credit Transfer Agreements that allow exchange students to transfer credits earned through coursework to their home universities in order to contribute to their degree program graduation requirements.



Information for International Students

International Students at TUFS

TUFS has actively accepted students with diverse cultural backgrounds from all over the world to raise personnel educated with global perspectives who are resourceful in liberal arts such as languages, cultures, and societies of various regions.

Degree Students (Regular Students)	<ul style="list-style-type: none"> ■ Undergraduates: They refer to those who major in Japanese Language at School of Language and Culture Studies or in Japanese Area Studies at School of International and Area Studies with a focus on linguistics and cultures. There are about 15 international students per one grade, per school among Japanese students. ■ Graduates: They refer to those participants of 4 major courses at Graduate School of Global Studies, who are committed to acquire higher expertise and pursue their research interest. As all classes of Peace and Conflict Studies (PCS), International Cooperation Studies are conducted in English, this program has been attracting students from countries where there are unsolved conflicts.
Non-degree Students (Non-regular Students)	<ul style="list-style-type: none"> ■ International Student Exchange Program of Tokyo University of Foreign Studies: ISEPTUFS / Exchange Students: International exchange students coming to Tokyo University of Foreign Studies under the student exchange agreement attend our exchange program ISEPTUFS. These classes are conducted in English and Japanese. ■ Research Students: They refer to either MEXT (Japanese government) scholarship students or self- or otherwise-funded students who are enrolling in TUFS undergraduate, graduate, or Japanese Language Center (JLC) programs and conducting research on a specific theme as well as studying specialized subjects related to their research theme or Japanese language. ■ Japanese Studies Students (Nikkensei): They refer to the MEXT scholarship students who study Japanese language, education, and cultures. ■ Teacher Training Students: They refer to the MEXT scholarship students enrolling in JLC programs who receive advanced trainings for Japanese education. They also teaches Japanese language in primary and secondary schools back in their home countries. ■ Pre-Undergraduate Students: They refer to the MEXT scholarship students receiving preparatory training prior to entering undergraduate programs in Japan, which enables them to learn in the same classes with Japanese students, by providing language and academic skills as well as knowledge in specialized subjects.

TUFS International Residence

On-campus accommodation is available for international students, Japanese students, and international researchers which is located in quiet and green surroundings. It is also convenient for campus life. Residents can enjoy many events held there such as tea ceremony classes and bazaars that introduce them to Japanese culture and they can participate in international exchange activities.



The Office for International Academic Strategy (OFIAS-TUFS)

OFIAS is responsible for developing international presence of TUFS. In this context, it undertakes operations of overseas bases, liaisons with overseas organizations, and works forward the establishment of human network on a global scale. OFIAS also works to accommodate researchers from overseas to promote exchange of scholars as well as students, and by doing so, it contributes to the creation of a multilingual and multicultural campus.



Education / Research Projects

TUFS is a cross-disciplinary and cutting-edge research institute dedicated to research on the world's languages, cultures and societies. We aspire to be a 'base university for Education and Research' and to contribute to a bright future in the age of globalized world. We have distinguished researchers with expertise in languages, cultures, and societies, and serve as an arena of interdisciplinary and comprehensive anthropology and philosophy.

With outstanding facilities such as the Graduate School of Global Studies, the Research Institute for Languages and Cultures of Asia and Africa, and other university institutions, and in cooperation with postgraduate students, we promote comprehensive and multidisciplinary research on the world's languages, cultures and societies.

Ongoing Projects

"Conflict Resilience" Project

Creation of a "Global Hub for Research on Japanese Language Education"

Educational advancement by the development of an e-learning system to enhance transparent and diversified learning

International Research Center for Languages and Cultures of Asia and Africa

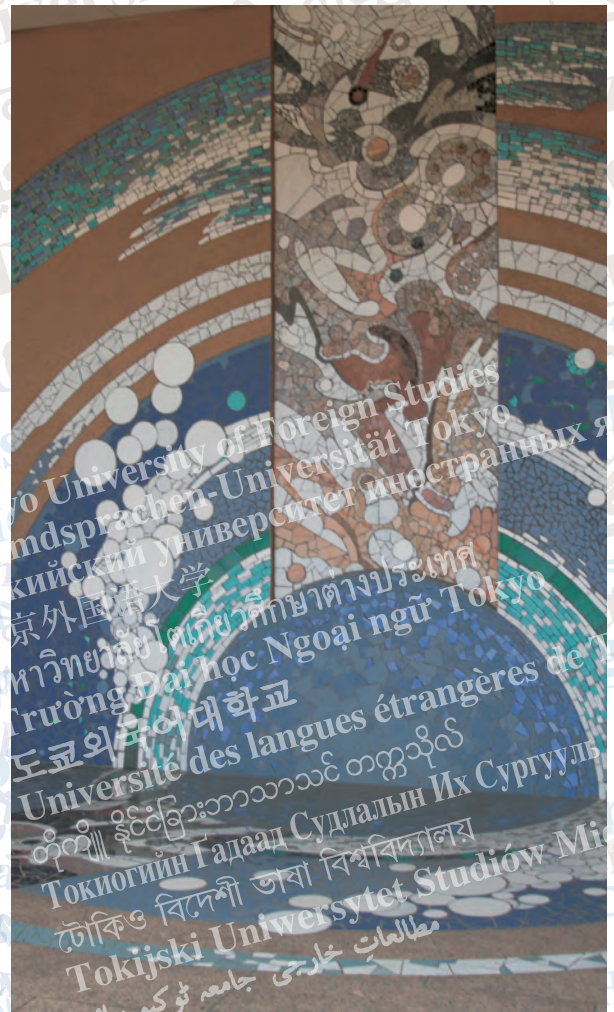
Project for Building an International Network of Collaborative Research on Endangered Linguistic Diversity

Center for Japanese Language Education, Educational Resources Development and Practice Training

Constructing new concept of European history from the perspective of historical experience of Borderlands

Japan-Europe Joint Research Project on the Transformation of Cultures across National Boundaries in the 20th and 21st Centuries

Literature, Social Movement and Gender in Contemporary India etc.




History

- 1857 — *Banshoshirabesho* (蕃書調所) was opened
- 1873 — Established as *Tokyo Gaikokugo Gakko* (東京外国語学校)
- 1885 — *Tokyo Gaikokugo Gakko* (東京外国語学校), its affiliate *Koto Shogyo Gakko* (高等商業学校), and *Tokyo Shogyo Gakko* (東京商業学校) merged
- 1886 — The language department was abolished (the abolition of *Tokyo Gaikokugo Gakko* (東京外国語学校))
- 1897 — *Fuzoku Gaikokugo Gakko* (附属外国語学校) was established as an affiliated school to *Koto Shogyo Gakko* (高等商業学校) (the foundation of TUFS)
- 1899 — *Koto Shogyo Gakko* (高等商業学校)'s affiliated *Fuzoku Gaikokugo Gakko* (附属外国語学校) was renamed *Tokyo Gaikokugo Gakko* (東京外国語学校) and became independent as a vocational school (TUFS gained independence)
- 1919 — The literature department, trade department and exploitation department were added
- 1944 — *Tokyo Gaikokugo Gakko* (東京外国語学校) was renamed *Tokyo Gaiji Senmon Gakko* (東京外事専門学校)
- 1949 — As the National School Establishment Law was enforced, *Tokyo University of Foreign Studies* (東京外国語大学) was established
- 1964 — The Research Institute for Languages and Cultures of Asia and Africa was established
- 1966 — The Graduate School of Language Studies was established
- 1970 — The branch Japanese language school was established under the Faculty of Foreign Studies
- 1992 — Japanese Language school was reorganized into the Japanese Language Center for International Students
- 1995 — The Faculty of Foreign Studies was reorganized into 7 courses
- 2009 — The Graduate School of Language Studies was reorganized as the Graduate School of Global Studies
- 2012 — The Faculty of Foreign Studies was reorganized into two schools, the School of Language and Culture Studies and the School of International and Area Studies (14 areas and 27 languages majors)
- 2014 — Selected as one of the "Top Global Universities" (by the Ministry of Education, Culture, Sports, Science and Technology, MEXT)



Access



Map showing TUFS location relative to major Tokyo rail lines and airports. Lines include Chuo Line, Nambu Line, Keio Line, Yamanote Line, Keihin Kyuko Line, Seibu Tamagawa Line, Joban Line, Keisei Line, and Tokyo Monorail. Airports shown are Narita and Haneda.

Detailed map of the TUFS campus area. Key locations include Tama Station, Tobitakyu Station, Musashinomori Park, Chofu Airfield, Sports Ground, Ajinomoto Stadium, National Police Academy, and Daigaku-mae. A shuttle bus line is also indicated.

Tokyo University of Foreign Studies
 3-11-1 Asahi-cho, Fuchu-shi, Tokyo 183-8534, Japan
 TEL +81-(0)42-330-5111
 FAX +81-(0)42-330-5140
<http://www.tufs.ac.jp/english/>

