

TUFS GUIDE 2018

Tokyo University of Foreign Studies

Cám ơn
شكر
ຂອບໃຈ
ขอบคุณ ครับ
Terima kasih
Gracias
Obrigado
謝謝
Merci
Благодаря
Grazie
Děkuji
Спасибо
ကျေးဇူးတင်ပါသည်။
धन्यवाद
Dziękuję
Teşekkürler
Danke
អរគុណ
ありがとう
Salamat
THANK YOU
৓

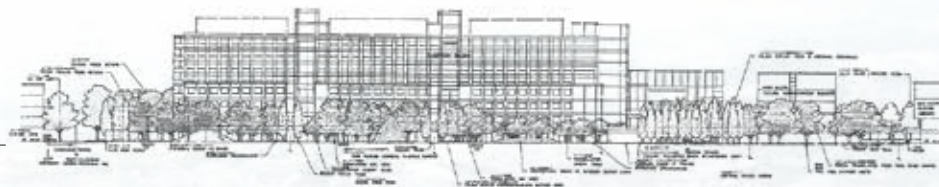


東京外国語大学
Tokyo University of Foreign Studies



Contents

Message from the President	3
TUFS Quick Overview	4
TOPIC 1: New School of Japan Studies	6
TOPIC 2: Inter-University Exchange Project	8
Organization Chart	10
Academic Departments	11
Partner Institutions	12
International Students at TUFS	14
Centers / Offices	16
- Office for International Affairs	
- TUFS Student Mobility Center	
- Global Admission Office	
- Japanese Educational Programs	
History	18
Access / The University Crest	19
TUFS Data	20



Message *from the President*



President, Tokyo University of Foreign Studies

Hiroataka Tateishi

The need to foster global human resources is of paramount concern today in all areas of industry, government, and academia. Globalization has been making dramatic advances with the advent of the 21st century, blurring the lines between domestic and overseas markets and bringing about massive movements of people and commodities across national borders.

As economies, societies, and cultures are drawn into the whirlwind of globalization, people are needed who see things from an all-encompassing bird's-eye perspective and who can make appropriate decisions within a broad, global context.

Tokyo University of Foreign Studies ensures that its students leave with excellent language training and a deep knowledge of the world's cultures and societies so that they will be able to make meaningful contribution to the globalization process. TUFS has been fostering global human resources for 150 years, going back to the days of its precursor, the Bansho Shirabesho, an institution for the study and translation of Western books and diplomatic documents established by the shogunate at the end of the Edo period in the latter half of the 1800s.

Outstanding global leaders are independent, assertive, and willing to undertake challenges. TUFS assists its students in acquiring these characteristics through diverse academic and extra-curricular activities. Our objective is to foster our students' creativity and critical thinking skills so that they will become multilingual global citizens, active throughout the world.

As Japan's only national university for the humanities and social sciences with a name indicative of its specialized focus, we believe we are uniquely positioned in this 21st century of globalization to disseminate global knowledge and interact with the global society.





TUFS Quick Overview

History

1873 Founded as a government institution of learning named Tokyo Gaikokugo Gakko

1899 Becomes an independent educational and research institution under the same name

1949 Reorganized as a national university under the name Tokyo University of Foreign Studies



In 2023, TUFS will celebrate

its **150th** anniversary.

NUMBER OF STUDENTS

Undergraduate Students

3,907

School of Language and Culture Studies: 1,933
School of International and Area Studies: 1,964
Faculty of Foreign Studies: 10
(in process of closing; no new intake)

Graduate Students

529

Master's Program: 326
Doctoral Program: 203

Total **4,436** students

INTERNATIONAL STUDENTS

International Students

737

Full-time students: 401
Exchange students and others: 336



ORGANIZATION

Undergraduate Faculties

- School of Language and Culture Studies
- School of International and Area Studies

Graduate Faculty

- Master's / Doctoral Programs
- Graduate School of Global Studies

Research Institutes / Education Centers

- Research Institute for Languages and Cultures of Asia and Africa
 - Japanese Language Center for International Students
- etc.

NUMBER OF STUDENTS STUDYING ABROAD

Short-term (shorter than 6 months)

692

Long-term (longer than 6 months)

855

Exchange students: 362, others: 493

Total **1,547** students



PARTNER INSTITUTIONS

Europe

27 countries/regions, 84 institutions

North America

2 countries/regions, 13 institutions

Asia

18 countries/regions, 65 institutions

Middle East

6 countries/regions, 13 institutions

Africa

10 countries/regions, 13 institutions

Latin America

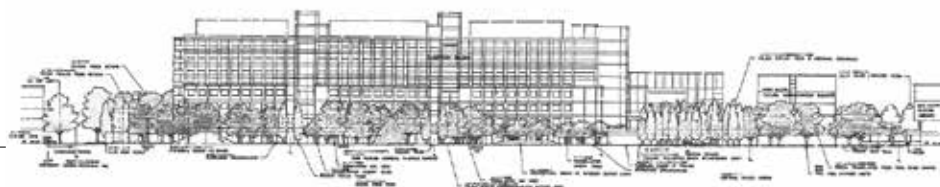
and the Caribbean

7 countries/regions, 10 institutions

Oceania

2 countries/regions, 5 institutions

Total **72** countries/regions **203** institutions



LANGUAGES TAUGHT AT TUFS

Major languages **28**

English, German, Polish, Czech, French, Italian, Spanish, Portuguese, Russian, Uzbek, Mongolian, Japanese, Chinese, Korean, Indonesian, Malay, Filipino, Thai, Lao, Vietnamese, Cambodian, Burmese, Urdu, Hindi, Bengali, Arabic, Persian, Turkish

Others **46**

Ainu, Altaic Languages, Amharic, Basque, Bulgarian, Cantonese, Catalonia, Danish, Dutch, Finnish, Georgian, Greek, Haida, Hawaiian, Hebrew, Hokkien, Hungarian, Ilocano, Japanese Sign Language, Kazakh, Kyrgyz, Kolyma Yukaghir, Latin, Lithuanian, Malayalam, Marathi, Mee Language, The Monguor language, Okinawan, Pali, Languages of Papua New Guinea, Romanian, Sanskrit, Serbo-Croat, Shanghainese, Sinhala, Slovene, Swahili, Tamil, Tibetan, Turkmen, Ukrainian, Uyghur, Wolaytta, Yiddish, Yoruba Language

MAIN ONGOING PROJECTS

Projects supported by MEXT

Top Global University Project:

- TUFS connects resources worldwide :
From the world to Japan and from Japan to the world
(started in FY 2014)

Functional Enhancement Project:

- Promotion of Japan studies
(started in FY 2015)

Inter-University Exchange Projects

- A Co-Creative Education Program of Humanities and Sciences to Solve Global Issues Confronting Japan and Latin America (La-CEP)
(started in FY 2015)
- TUFS Japan Specialist Program for the Enhancement of Japanese Language and Cultural Outreach in Myanmar, Laos and Cambodia
(started in FY 2016)
- TUFS Japan-Russia Student Mobility Program: Creating Business Networks and Fostering Human Interaction
(started in FY 2017)



LIBRARY HOLDINGS

East Asia publications: 302,115
Other publications: 467,428
Periodicals: 93,807

Total **863,350**

NUMBER OF STAFF

Executive Directors: 8
Teaching staff: 261 (including 43 non-Japanese nationals)
Administrative Staff: 110 Others: 26

Total **405**



The New School of Japan Studies

The School of Japan Studies offers the opportunity to study and discover Japan comprehensively and from international perspectives. This program brings Japanese and international students together to share ideas and learn to develop innovative problem-sharing skills that will help them face the challenges of an ever-changing world. The program will start from 2019 academic year.

● Features of the School of Japan Studies (SJS)

Point

1

Studying Japan Comprehensively

This program offers an interdisciplinary approach to the study of Japan. Lectures and seminars are combined with various fieldwork activities providing hands-on experience.

Point

2

Learning and Communicating in English and Japanese

In this program, Japanese and international students learn together, using both English and Japanese as the languages of study and communication.

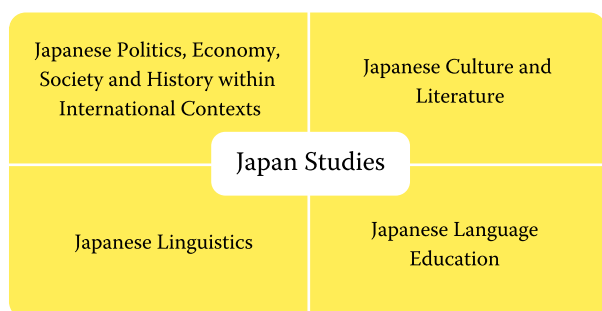
Point

3

Engaging Education through Active Learning

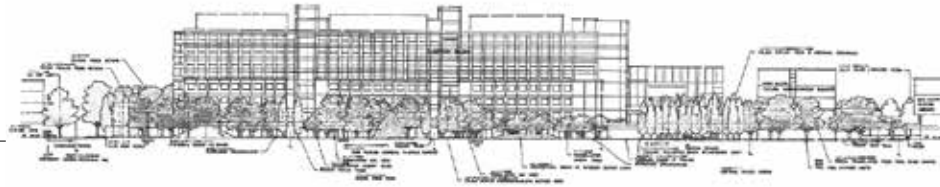
This program promotes “active learning”, during which students acquire skills and methods for self-development and problem-solving.

● Academic Fields in SJS



● Program Outline

Study Period	4 years
Degree Granted	Bachelor of Arts (Language and Area Studies)
Graduation Requirements	125 credits (including a graduation thesis)
Language of Instruction	English and Japanese



● Features of the School of Japan Studies (SJS)

The School of Japan Studies accepts students of diverse backgrounds from across Japan and the rest of the world. Students will learn and communicate with each other in both English and Japanese. At SJS, students will study comprehensively about Japan and strengthen their academic skills and linguistic competencies. Moreover, there are opportunities for fascinating short-term and long-term study abroad programs.



All students are required to take the "Multicultural Collaborative Works" class in which they will learn and experience how to work effectively in a team. Additionally, students will learn about Japan from various perspectives in the introductory classes, while at the same time, enhance their English and Japanese language abilities in the language classes.



In the second year, the subjects "Fieldworks in Local Community" and "Community Outreach Project", which will provide first-hand experience of how to get information and learn new and different ideas by collaborating with other students. Introductory and survey classes will provide in-depth knowledge and information on Japan in both Japanese and English.



In the third year, SJS encourages students to enhance their knowledge about Japan by taking various elective subjects. Seminar classes will focus on imparting specialized knowledge within each discipline. Students will learn and enhance their research abilities by taking classes in two or more fields. All students have the opportunity to participate in credit-bearing "Short Visit" and "Study Tour" programs, and career-related courses incorporating domestic and overseas internships.



The fourth year is dedicated to the writing of a graduation thesis based on the study and research carried out in the first three years. Each student will have a supervisor who guides them through the process of thesis writing. Students must write their thesis in either English or Japanese. Additionally, students are also required to write a long abstract in the other language than that in which their thesis is written.

● Faculty Members

There are 36 members of faculty in the School of Japan Studies.

They teach across the various disciplines included within the degree program.



Philip Seaton

Field: Modern Japanese History

A Japan studies degree allows you to study many subjects at once, including language, history, culture and politics. And Japan's global role means there's always an international dimension, too.



Nobuo Haruna

Field: Political and Diplomatic History of Japan

Japan is now undergoing a major transition. The population is declining after a continuous growth of 140 years. How would and should the Japanese society change? This is a question we will address in a global context and in a scientific manner.



Iris Haukamp

Field: Film Studies

We can learn much from the images that a society produces of itself and of others. In order to reflect on Japan's culture from a global as well as a local perspective, Japanese film with its long history and international acclaim is an exciting topic to study.



Raj Lakhi Sen

Field: Japanese Literature

In my Japanese literature classes, students from Japan and all-over the world come together to discover Japan by close reading of texts from diverse perspectives, discussions, hands-on experience in literary translation, which leads students to develop critical thinking and imagination.



Inter-University Exchange Project

The TUFS Japan-Russia Student Mobility Program: Creating Business Networks and Fostering Human Interaction is a joint initiative by Tokyo University of Foreign Studies and six Russian universities (M. V. Lomonosov Moscow State University, Moscow State Institute of International Relations (University) of the Ministry of Foreign Affairs of the Russian Federation, Russian State University for the Humanities, National Research University Higher School of Economics, St. Petersburg State University and Far Eastern Federal University) to nurture human resources that will play an active role in the Japan-Russia business sector. The program comprises three types of exchange programs: short-term and long-term exchange programs and internship programs, and will strengthen Russia-related, Japan-related, and practical economic education at each university in a multidirectional and multifaceted manner.



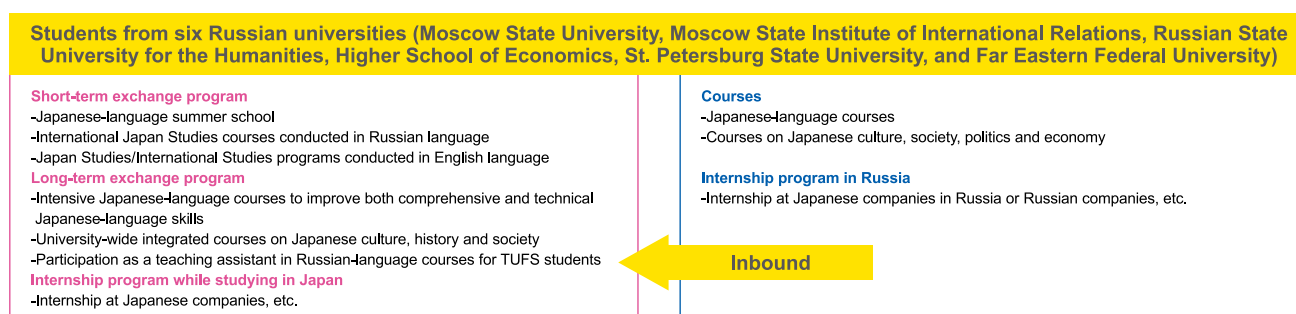
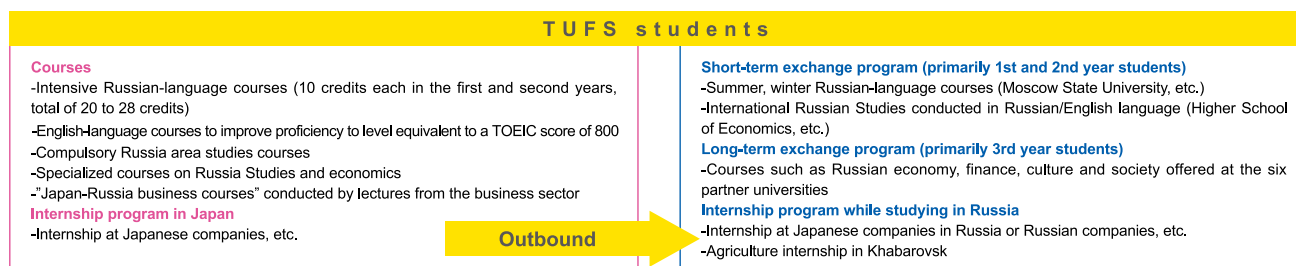
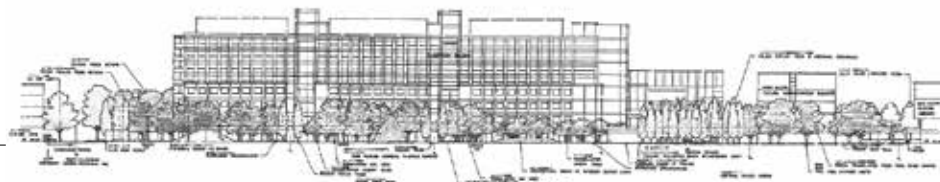
interview

Project Leader, Kyoko Numano

Professor of Graduate School of Global Studies

The TUFS Japan-Russia Student Mobility Program is aimed at providing students both in Japan (TUFS) and in six partner universities in Russia with specialized education and work experience opportunities combining short- and long-term exchange programs and internship programs. For this purpose, we have found internship companies in diverse business fields with the cooperation of Tokyo Gaigokai, the TUFS alumni association, and the TUFS Japan-Russia Business Network, comprised of TUFS graduates working in various fields of business involving Japan and Russia. We shall endeavor to develop human resources with advanced language skills, knowledge, and intelligence, who are courteous and respectful of others, have a love of peace and freedom, and the negotiating capabilities and flexibility necessary to resolve various issues so that they may play critical roles in Japan-Russia business relations. Through this project, we plan to strengthen the cooperation between TUFS and the six Russian partner universities and to nurture students who are ready to contribute to the business fields in both countries.





Summary of Exchange Program

- 1 Short-term exchange program: A two- to four-week program primarily for first- and second-year undergraduate students to establish foundations for basic knowledge of Russia, Japan and Japan-Russia relations
- 2 Long-term exchange program: An approximately one-year program primarily for third-year undergraduate students majoring in Russia or Japan studies to study intensively the economy, society and culture of Japan or Russia
- 3 Internship program: Work experience program in diverse fields in Japan and Russia offered to participating students from TUFS and the six partner Russian universities

Global Human Resources Nurtured by the Project

Under the three programs in this project, with the aim of strengthening Japanese-Russian collaboration, this project will nurture human resources who will be active in the Japan-Russia business with the following skills.

Language skills: The above three programs in this project are aimed at strengthening Japanese-Russian collaboration through the fostering of human resources that will be able to apply the following skills in Japan-Russia business.

Knowledge of Russian and Japanese economies: Knowledge of the history, society, culture and economy of both Japan and Russia and basic knowledge indispensable for business such as economics, statistics and accounting (acquired through the courses offered at the home university and host university)

Ability to coordinate and take action: Have the toughness necessary to coordinate the demands of diverse stakeholders and resolve issues, and coordinative skills respectful of others, able to take initiative, and creative (acquired through the exchange and internship programs)

By fostering these skills in a well-balanced manner, this project will nurture excellent Japan-Russia business personnel with the diligence to engage in diverse business fields after graduation, so as to contribute to the strengthening of collaboration between Japan and Russia.

Features of the Project

By combining internships with short- and long-term exchange programs, this project enables students to enhance their language skills, knowledge of Russia and Japan, and ability to coordinate and take action so that they can succeed in such diverse business fields as trading and finance, tourism and transport, agriculture and marine products industries, manufacturing and IT, interpretation/translation, including medical interpreting, and publishing and journalism. The project will be implemented in collaboration with Tokyo Gaigokai, the TUFS alumni association, and the TUFS Japan-Russia Business Network, comprised of TUFS alumni who are active in Japan-Russia business sectors.

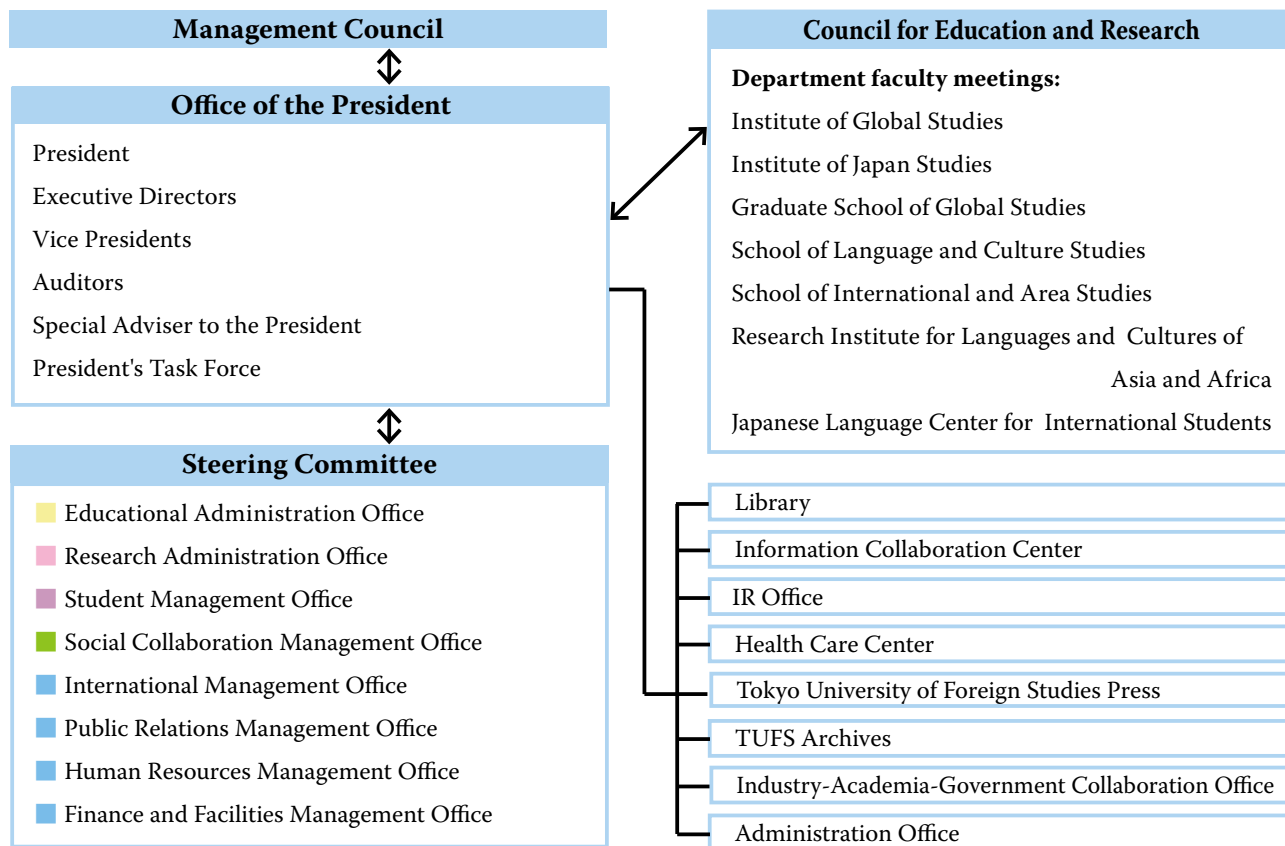
Number of Exchange Students between TUFS and six Russian Partner Universities

	2017	2018	2019	2020	2021
Outbound	28	30	32	34	37
Inbound	15	41	43	45	47



TUFS Organization Chart

● Management organizations



● Organizations for Education and Research



TUFS Academic Departments

Graduate Programs: Graduate School of Global Studies

The graduate program began in 1966 as a Master's Program in Foreign Language Studies. In 1992, the program was redesigned and expanded into the Master's and Doctoral Programs in Area and Culture Studies, thus encompassing not only foreign language studies but also the study of regions and cultures. In 2009, TUFS consolidated the programs into the Graduate School of Global Studies. In 2018, the graduate programs TUFS offers are:

Master's Programs

1. Global Studies
2. Japan Studies

Doctoral Programs

1. Global Studies
2. Japan Studies

Undergraduate Programs: School of Language and Culture Studies School of International and Area Studies

The undergraduate programs provide students with deep understanding and knowledge of diverse languages, cultures, and societies, while nurturing their ability to think critically and express their own ideas articulately. Students are required to choose a major from among the 28 languages and 14 areas. Each student studies his/her selected major language and area in the first and second years. In the third and fourth years, students take specialized courses. There are three specialized courses in each school.

School of Language and Culture Studies

1. Language and Information Studies
2. Applied Language and Communication Studies
3. Culture and Literary Studies

School of International and Area Studies

1. Area Studies
2. Contemporary Global Studies
3. International Relations

Research Institute for Languages and Cultures of Asia and Africa

The Research Institute for Languages and Cultures of Asia and Africa (ILCAA, or AA-ken) is an affiliate of TUFS charged with the following three undertakings:

- (1) Conducting collaborative research projects
- (2) Processing, editing, and disseminating data on the languages and cultures of Asia and Africa
- (3) Training junior scholars through joint research, workshops, and seminars



Japanese Language Center for International Students

JLCTUFS (Japanese Language Center for International Students, TUFS) is one of the largest Japanese language institutions in the world and has a half-century of history. In 2012, JLCTUFS was certified by MEXT as a center for Japanese language education, educational resources development, and practical training. Today it serves as a global hub for TJSOL (Teaching Japanese to Speakers of Other Languages) training.

The Center mainly accepts government-funded international students as well as students from universities with which TUFS has an exchange partnership.



TUFS Partner Institutions

72 countries/regions, 203 institutions

EUROPE

27 countries/regions, 84 institutions

● Austria

- Österreichische Akademie der Wissenschaften
- Universität Wien

● Belgium

- University of Liege

● Bulgaria

- Sofia University "St. Kliment Ohridski"

● Czech Republic

- Charles University
- Masaryk University
- Palacký University Olomouc

● Finland

- University of Oulu

● France

- Université de la Sorbonne Nouvelle Paris III
- Langues et cultures de l'aire tibétaine
- Institut d'Etudes Politiques de Paris Fondation Nationale des Sciences Politiques
- Institut National des Langues et Civilisations Orientales
- École Supérieure d'Interprètes et de Traducteurs
- Sciences Po Bordeaux
- L' Université Sciences Humaines et Sociales - Lille 3
- Université Paris Diderot
- Stendhal - Grenoble 3 University
- Aix-Marseille Université

● Germany

- Georg-August-Universität Göttingen
- Friedrich-Alexander-Universität Erlangen-Nürnberg
- Universität Bielefeld
- Justus Liebig-Universität Gießen
- Philipps-Universität Marburg
- Institute for African Studies, University of Cologne
- Max Planck Institute for Evolutionary Anthropology
- Asien-Afrika Institut, University of Hamburg
- Ludwig-Maximilians-Universität München
- The University of Education Schwäbisch Gmünd
- Freie Universität Berlin

● Hungary

- Central European University, Department of History

● Ireland

- University College Cork

● Italy

- Università degli Studi di Napoli "L'Orientale"
- Università Ca' Foscari Venezia
- Università degli Studi di Torino
- Università degli Studi di Roma "La Sapienza"
- University of Trento
- University of Bologna
- The University for Foreigners of Perugia

● Kazakhstan

- Al-Farabi Kazakh National University

● Lithuania

- Vytautas Magnus University

● Netherlands

- Leiden University
- Royal Netherlands Institute of Southeast Asian and Caribbean Studies

● Norway

- UiT The Arctic University of Norway

● Poland

- International Cultural Centre
- Jagiellonian University
- University of Silesia in Katowice
- Nicolaus Copernicus University in Toruń

● Portugal

- Universidade de Coimbra
- Universidade de Lisboa
- Camoes, Instituto da Cooperacao e da Lingua
- The University of Porto

● Romania

- Romanian Cultural Institute
- Babeş-Bolyai University

● Russia

- Russian State University for the Humanities
- M. V. Lomonosov Moscow State University
- The Faculty of Philology and Arts, St. Petersburg State University
- Moscow State Institute of International Relations (University)
- Far Eastern Federal University
- National Research University Higher School of Economics
- Buryat State University

● Serbia

- University of Belgrade

● Slovenia

- University of Ljubljana

● Spain

- Universidad de Sevilla
- Universitat Pompeu Fabra
- Universidad Autónoma de Madrid
- The University of Salamanca
- Institut Ramon Llull
- Instituto Cervantes
- University of Alcalá
- Universitat Autònoma de Barcelona
- The Etxepare Basque Institute
- University of the Basque Country
- Universitat de Lleida
- The University of Málaga

● Switzerland

- L'Université de Genève
- Universität Zürich

● Tajikistan

- The Tajik State Institute of Languages
- Named after Sotim Ulugzoda

● Turkmenistan

- International University for the Humanities and Development of Turkmenistan

● Ukraine

- Ivan Franko National University of Lviv

● U.K.

- School of Oriental and African Studies, University of London
- University of Leeds
- The University of Manchester
- University of Essex

● Uzbekistan

- Tashkent State Institute of Oriental Studies

ASIA

● Bangladesh

- University of Dhaka

● Bhutan

- Dzongkha Development Commission

● Brunei

- Universiti Brunei Darussalam

● Cambodia

- Royal University of Phnom Penh

● China

- Shanghai International Studies University
- Beijing Language and Culture University
- Xiamen University
- Inner Mongolia University
- Northeast Normal University
- Dalian University of Foreign Languages
- Beijing Foreign Studies University
- School of Foreign Studies, Peking University
- Ningbo University
- China Tibetology Research Center
- The Chinese University of Hong Kong
- The University of Hong Kong

● India

- Central Institute of Indian Languages, Ministry of Education
- Indian Statistical Institute
- The University of Delhi
- Jadypur University
- Zabaan Language Institute

● Indonesia

- Gadjah Mada University
- Center for Social and Cultural Studies, Indonesian Institute of Sciences
- Universitas Indonesia
- Atma Jaya Catholic University of Indonesia
- Languages and Arts Faculty, Manado State University

AFRICA

10 countries/regions, 13 institutions

● Cameroon

- Délégation Générale à la Recherche Scientifique et Technique
- University of Dschang

● Egypt

- Cairo University
- Ain Shams University

● Ghana

- University of Ghana

● Mali

- L'Institut des Sciences Humaines

● Morocco

- Mohammed V University of Rabat

● Mozambique

- Eduardo Mondlane University
- Lurio University

● Rwanda

- Protestant Institute of Arts and Social Sciences

● South Africa

- University of Pretoria

● Zambia

- University of Zambia

● Zimbabwe

- University of Zimbabwe

18 countries/regions, 65 institutions

● Laos

● National University of Laos

● Malaysia

● Institute of Language and Literature Malaysia
● The Institute for Development Studies, Sabah
● Universiti Kebangsaan Malaysia

● Mongolia

● National University of Mongolia
● Khovd University

● Myanmar

◆ University of Yangon

● Pakistan

● The University of Azad Jammu & Kashmir
● Quaid-i-Azam University
● Oriental College, University of the Punjab

● Philippines

● University of the Philippines
● De La Salle University-Manila
● Ateneo de Manila University

● Republic of Korea

● Yonsei University
● Seoul National University
◆ Hankuk University of Foreign Studies
● Sookmyung Women's University
● Hanshin University
● Sungkonghoe University
● Cyber Hankuk University of Foreign Studies
● Jeju National University
● Kyung Hee University
● Busan University of Foreign Studies
● Ehwa Womans University

● Singapore

● The Faculty of Arts & Social Sciences, National University of Singapore

● Thailand

● Srinakharinwirot University
● Thammasat University
● Chulalongkorn University
● Chiang Mai University
● Research Institute for Languages and Cultures of Asia, Maidol University

● Vietnam

● VNU University of Social Sciences and Humanities, Hanoi
● University of Social Sciences and Humanities, Vietnam National University-Ho Chi Minh City
● University of Language and International Studies - VNU

● Taiwan

● National Chengchi University
● National Taiwan University
◆ Tamkang University
● National Taiwan Normal University
● Kainan University
● National Tsing Hua University

NORTH AMERICA

2 countries/regions, 13 institutions

● Canada

● The University of British Columbia
● University of Regina

● U.S.A.

● Cornell University
● University of California, San Diego
● University at Albany, State University of New York
● Columbia University
● San Diego State University
● Stony Brook University, The State University of New York
● University of Nebraska at Kearney
● University of Hawai'i at Mānoa
● The University of Texas at Austin
● University of Delaware
● George Mason University

MIDDLE EAST

6 countries/regions, 13 institutions

● Iran

● Allameh Tabataba'i University
● Islamic Azad University, Shiraz Branch
● University of Isfahan

● Jordan

● Ali Baba International Center

● Lebanon

● Orient Institute of the German Oriental Society-Beirut
● Faculty of Human Sciences, Branch 1, Lebanese University
● American University of Beirut

● Syria

● Damascus University

● Turkey

● Ankara University
● Boğaziçi University
● Yunus Emre Institute
● Marmara University

● Palestian Authority

● Birzeit University

OCEANIA

2 countries/regions, 5 institutions

● Australia

● Australian National University
● The University of Melbourne
● Deakin University

● New Zealand

● The University of Auckland
● Victoria University of Wellington

LATIN AMERICA

7 countries/regions, 10 institutions

● Argentina

● National University of La Plata

● Brazil

◆ Universidade do Estado do Rio de Janeiro
● Universidade Federal do Paraná
● Universidade Estadual de Campinas

● Colombia

● Universidad EAFIT

● Costa Rica

● University for Peace

● Cuba

● The University of Havana

● Mexico

● Universidad Nacional Autónoma de México
◆ Universidad de Guanajuato

● Uruguay

● University of the Republic, Uruguay



TUFS International Students at TUFS

TUFS actively accepts students with diverse cultural backgrounds from all over the world to nurture professionals with global perspectives who are knowledgeable in languages, cultures, and societies of various regions.



Degree Program

■ Undergraduates

TUFS has two undergraduate programs, the School of Language and Culture Studies for learning Japanese language and the School of International and Area Studies for Japanese area studies. Of the international students, 30 enrolled after passing the domestic entrance examinations, while 10 applied from overseas through the pre-arrival admissions program. They study together with Japanese students.

■ Graduates

There are a total of 221 international students enrolled in the programs offered by the Graduate School of Global Studies. Classes are primarily conducted in Japanese, but all the lectures in the Peace and Conflict Studies and International Cooperation Studies programs are conducted in English.

Non-degree Program

■ Exchange Students

The International Student Exchange Program (ISEP-TUFS) is designed for inbound international exchange students. It provides them with the opportunity to acquire a firm understanding of Japanese culture and to deepen their perspectives on current international issues at an academic level.

■ Research Students

These are either MEXT (Ministry of Education, Culture, Sports, Science and Technology: Japanese Government) scholarship students or self-funded students enrolled in TUFS undergraduate, graduate or Japanese Language Center (JLC) programs to conduct research on specific topics, as well as study the Japanese language and related areas of specialization.

■ Japanese Studies Students (Nikkensei)

These are MEXT scholarship students studying the language, education and culture of Japan.

■ Teacher Training Students

Teacher Training Students are educators in elementary and secondary schools in their home countries. They are enrolled in JLC as MEXT scholarship students for advanced training in Japanese language education.

■ Pre-undergraduate Students

These are MEXT scholarship students undergoing preparatory training prior to entering undergraduate programs in Japanese national universities. Their study focuses on improvement of Japanese language proficiency and the acquisition of knowledge in their area of specialization to be able to understand lectures conducted in Japanese.



TUFS On-Campus Housing

On-campus accommodation in convenient, quiet and green surroundings is available for international students, Japanese students, and international researchers. Residents can enjoy Japanese cultural events and international exchange activities such as tea ceremony and Japanese calligraphy organized by TUFS and other organizations.

For more information, see the following website:

<http://www.tufs.ac.jp/english/admission/preparing/hall.html>

Rooms

Residence No. 1 : 141 rooms

(138 single, 2 double, 1 family)

Residence No. 2 : 90 rooms

(72 single, 12 double, 6 family)

Residence No. 3 : 230 rooms

(230 single)

* No.3 is a residence for both Japanese students and international students. No.1 and No.2 are only for international students.

Office for International Affairs

✉ kokusai-kyoten@tufts.ac.jp

The Office for International Affairs is responsible for developing and strengthening TUFS' partnerships, and establishing a global network with academic institutions overseas. The office also works to accommodate the needs of international scholars, promote exchange of researchers as well as students, organize staff training programs, and otherwise contribute to the creation of a multilingual and multicultural campus.

As part of efforts to create a truly global academic environment, the Office for International Affairs is also charged with managing international projects such as the Top Global University Project, the Inter-University Exchange Project and the Promotion of Japan Studies.



TUFS Student Mobility Center

✉ ryugakushien@tufts.ac.jp

The TUFS Student Mobility Center is open to both outbound and inbound Japanese and international students, including non-TUFS students.

For outbound students, we

- Provide advice and tips on study abroad options
- Host pre-departure orientations
- Collect and provide information about various study-abroad programs including short-term programs, exchange programs, etc.
- Host information sessions regarding visa, crisis management and scholarships

For inbound students, we

- Provide advice and tips on studying in Japan
- Host community support programs
- Host Short Stay Summer/Winter Program



TUFS Global Admission Office

✉ gao@tufs.ac.jp

The Global Admission Office is responsible for inquiries from overseas regarding enrollment in TUFS, managing international applications for the undergraduate program (with financial support from MEXT which provides Japanese government scholarships for International Priority Undergraduate Programs), and processing applications from international research students.



Japanese Educational Programs

い う は に ほ

As a hub for Japanese education, the Japanese Language Center for International Students (JLC) implements a variety of Japanese education programs, including:

- (1) Japanese language education for Pre-undergraduate Students (MEXT scholarship students)
- (2) The Japanese Language Program of TUFS (JLPTUFS)

JLPTUFS is specifically charged with improving the Japanese language skills of international students at TUFS. The curriculum is designed for students who require Japanese for their studies and

research. In the spring term of 2018, there were 317 international students from 60 countries and areas studying in JLCTUFS. These students, all with diverse cultural backgrounds, learn together inside and outside the classroom and also participate in cultural exchange with Japanese students. This program is held for 13 weeks each term.

- (3) Short Stay Summer/Winter Program
The Short Stay Program is a three-week intensive program for learners of Japanese language who are currently enrolled in partner and non-partner institutions.

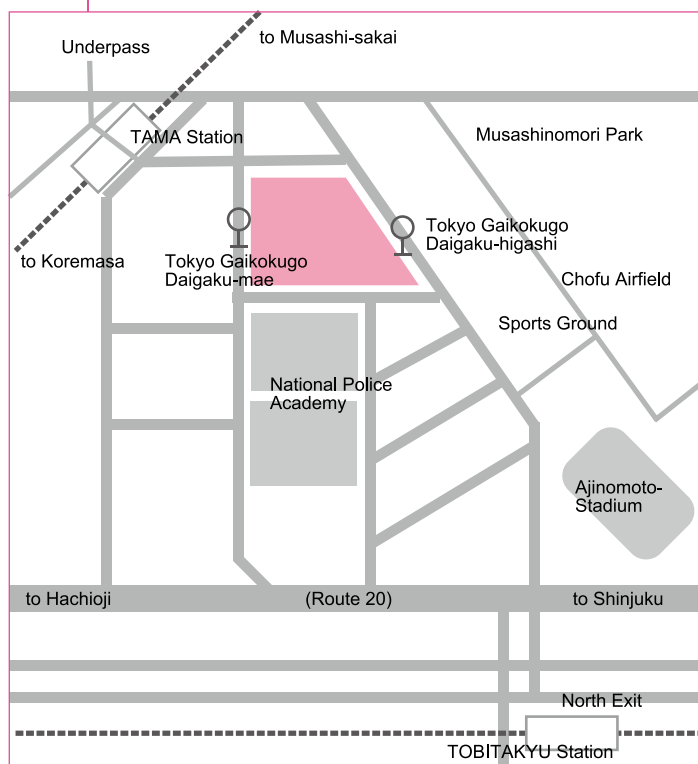
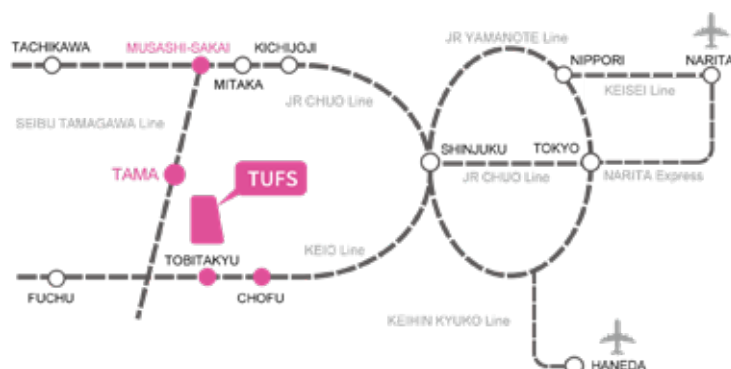
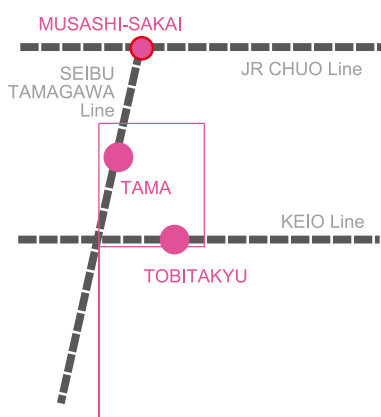
TUFS History



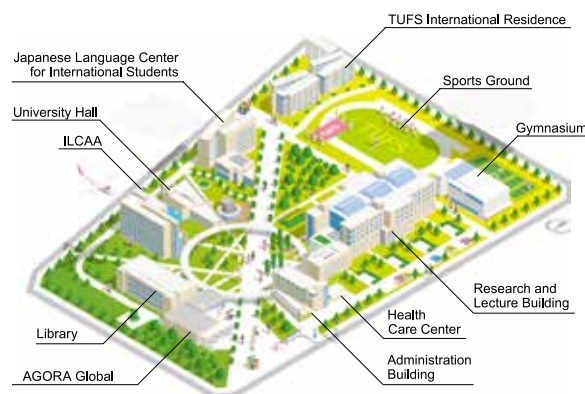
- 1857 *Bansho Shirabesho* (蕃書調所) opened
- 1873 Established as *Tokyo Gaikokugo Gakko* (東京外国語学校)
- 1885 Affiliate schools, *Koto Shogyo Gakko* (高等商業学校), and *Tokyo Shogyo Gakko* (東京商業学校) are merged with *Tokyo Gaikokugo Gakko* (東京外国語学校)
- 1886 *Tokyo Gaikokugo Gakko* (東京外国語学校) is closed
- 1897 *Fuzoku Gaikokugo Gakko* (附属外国語学校) established as an affiliated school to *Koto Shogyo Gakko* (高等商業学校), to mark the foundation of TUFS
- 1899 *Fuzoku Gaikokugo Gakko* (附属外国語学校) is separated from *Koto Shogyo Gakko* (高等商業学校) to become independent as a vocational school and is renamed *Tokyo Gaikokugo Gakko* (東京外国語学校)
- 1919 New departments for literature, trade and colonization are added
- 1944 *Tokyo Gaikokugo Gakko* (東京外国語学校) is renamed *Tokyo Gaiji Senmon Gakko* (東京外事専門学校)
- 1949 The current *Tokyo University of Foreign Studies* (東京外国語大学) is established under the National School Establishment Law
- 1964 The Research Institute for Languages and Cultures of Asia and Africa is established
- 1966 The Graduate School of Language Studies is established
- 1970 A Japanese language school branch is established within the Faculty of Foreign Studies
- 1992 The Japanese Language school branch is reorganized into the Japanese Language Center for International Students
- 1995 The Faculty of Foreign Studies is reorganized into 7 courses
- 2009 The Graduate School of Language Studies is reorganized as the Graduate School of Global Studies
- 2012 The Faculty of Foreign Studies is reorganized into two schools, the School of Language and Culture Studies and the School of International and Area Studies (14 areas and 27 languages majors)
- 2014 TUFS is designated a Top Global University by the Ministry of Education, Culture, Sports, Science and Technology (MEXT)



TUFS Access



Campus Map



TUFS The University Crest



History: In 1899, when the School of Foreign Languages was separated from *Koto Shogyo Gakko* and renamed *Tokyo Gaikokugo Gakko* (Tokyo School of Foreign Languages), the School head at the time, Naibu Kanda, and the school board members selected the school crest, the torch symbolizing setting the world afire with knowledge, and the letter "L" from the Latin word "lingua," meaning "language." The feathers of the wings on both sides are said to represent the School's departments, which initially numbered eight.

Executives / Number of Staff

Executives

President	TATEISHI, Hirotaka
Executive Director / Vice President (for General Affairs, Education, and Public Relations)	HAYASHI, Kayoko
Executive Director / Vice President (for Personnel Affairs, Research, and Institutional Cooperation)	IWASAKI, Minoru
Executive Director (for Finance, Facilities, IR, and Information Management) / Secretary-General	SAGISAKA, Katsuhisa
Vice President (for International Affairs) / Director of the Library	ITO, Sukero
Vice President (for Student Affairs, Alumni, and External Relations)	TAKEDA, Chika
Auditor	TERAMAE, Takashi
Auditor	KUWAHARA, Michio

Special Advisors to the President

Special Advisor to the President (for Internal Review and Evaluation, and IR)	GAMOU, Keiichi
Special Advisor to the President (for Open Academy, Alumni, and Fund)	SANO, Hiroshi
Special Advisor to the President (for University Cooperation, and IR)	FUJINAWA, Yasuhiro
Special Advisor to the President (for International Affairs and Social Equality)	IJUIN, Ikuko
Special Advisor to the President (for Fund and Alumni)	URATA, Kazuyuki
Special Advisor to the President (for Fund and Alumni)	SAITO, Hiroko
Special Advisor to the President (for Career Support)	IMAI, Akio

President's Task Force

International Affairs	HAGIO, Sho
Career Support	YAMADA, Fumihiko
Institutional Research	TAKAHASHI, Masayoshi

Schools, Institutes

Dean, School of Language and Culture Studies	YAGI, Kumiko
Dean, School of International and Area Studies	YOSHIDA, Yuriko
Dean, Institute of Global Studies	AOYAMA, Toru
Dean, Institute of Japan Studies	HAYATSU, Emiko
Dean, Graduate School of Global Studies	AOYAMA, Toru
Director, Research Institute for Languages and Cultures of Asia and Africa	IIZUKA, Masato
Director, Japanese Language Center for International Students	FUJIMURA, Tomoko
Director, Library	ITO, Sukero
Director, Information Collaboration Center	KURITA, Hiroyuki
Director, Health Care Center	YAMAMOTO, Isamu
Director, International Center for Japanese Studies	SAKAMOTO, Megumi
Director, African Studies Center	TAKEUCHI, Shinichi
Director, World Language and Society Education Centre	HAYASHI, Kayoko

(As of May 1, 2018)

Director, TUFS International Residence	TAKEDA, Chika
Director, Global Career Center	TAKEDA, Chika
Director, TUFS Student Mobility Center	HAGIO, Sho
Director, World Language Center	TONO, Yukio
Director, Institute of Foreign Affairs	OKAWA, Masahiko
Director, Institute of Language Research	NARITA, Takashi
Director, Institute of Transcultural Studies	YAMAGUCHI, Hiroyuki
Director, Institute of International Relations	SUZUKI, Yoshikazu
Director, Center for Multilingual Multicultural Education and Research	TAKEDA, Chika
Director, Information Center for Social and International Collaboration	NAGASAKI, Teruaki
Director, TUFS Open Academy	SANO, Hiroshi

Number of Staff

(As of May 1, 2018)

Category	President	Executive Directors	Vice Presidents	Auditors	Professors	Associate Professors	Lecturers	Assistant Professors	Assistants	Language Lecturers	Foreign Researchers	Administrative / Technical Staff	Fixed-term Project Staff	Total
Members of Board	1	3	2	2 (2)										8 (2)
Institute of Global Studies					68 [2]	42	6							116 [2]
Institute of Japan Studies					18 [1]	12 [1]	4							34 [2]
Research Institute of Languages and Cultures of Asia and Africa					18	12		6 [6]			3 [3]			39 [9]
World Language and Society Education Centre					1 [1]		12 [16]	11 [11]	1	33 [33]				63 [61]
African Studies Center					1		3 [3]							4 [3]
Special Appointive Researcher to President					2 [1]			1 [1]						3 [2]
Health Care Center					1 [1]							1		2 [1]
Administration Office												109		109
Others						1							26 [26]	27 [26]
Total	1	3	2	2 (2)	109 [6]	67 [1]	30 [19]	18 [18]	1	33 [33]	3 [3]	110	26 [26]	405 (2)[106]

Note: Figures in parentheses () indicate the number of part-time staff. Figures in brackets [] indicate the number of fixed-term instructors.

Numbers of Students

School of Language and Culture Studies

(As of May 1, 2018)

Major	1st Year			2nd Year			3rd Year			4th Year			Total
	Male	Female	Total	Male	Female	Total	Male	Female	Total	Male	Female	Total	
English/Northwest Europe	7	13	20	7	8	15	6	19	25	9	25	34	94
English/North America	7	16	23	14	15	29	6	12(3)	18(3)	14(1)	24(2)	38(3)	108(6)
English/Oceania								1	1	1	3	4	5
German/Central Europe	12	16	28	11	17	28	11	23	34	16(3)	25	41(3)	131(3)
Polish/Central Europe	2	6	8	1	8	9	4	11	15	2	5	7	39
Czech/Central Europe	3	5	8	7	4	11	3	9	12	3	5	8	39
French/Southwest Europe	3	26	29	6	23	29	9	29(1)	38(1)	8(1)	40(2)	48(3)	144(4)
Italian/Southwest Europe	3	12	15	3	10	13	6(1)	10(1)	16(2)	6	20	26	70(2)
Spanish/Southwest Europe	9	15	24	11	19	30	6	21(1)	27(1)	16(1)	30	46(1)	127(2)
Spanish/Latin America	2	5	7	4	4	8	3	2	5	4	6	10	30
Portuguese/Southwest Europe	1	8	9	3	6	9	3	8	11	3	15	18	47
Portuguese/Latin America	2	2	4	3	3	6	3		3	5(1)	3	8(1)	21(1)
Russian/Russia	13	14	27	11	15	26	13	14	27	17(1)	28(2)	45(3)	125(3)
Russian/Central Asia	4	4	8	1	5	6	3	5	8	3	8	11	33
Mongolian/Central Asia	2	6	8	4	4	8	4	5	9	4	7	11	36
Japanese/Japan	3	8	11	2	9	11	3	11(1)	14(1)	6	13	19	55(1)
Japanese(International Students)/Japan	7	14	21	10	12	22	9(1)	10	19(1)	7	9	16	78(1)
Chinese/East Asia	10	20	30	8	26	34	13(2)	25(1)	38(3)	19	29(5)	48(5)	150(8)
Korean/East Asia		15	15	1	15	16	1(1)	21(2)	22(3)		25(3)	25(3)	78(6)
Indonesian/Southeast Asia	5	5	10	3	8	11	3	8	11	9	14	23	55
Malay/Southeast Asia	1	4	5	2	4	6	1	7	8	3	2	5	24
Filipino/Southeast Asia		7	7	3	5	8	2	7	9	2	9	11	35
Thai/Southeast Asia		7	7	1	7	8	2	9(1)	11(1)	2	10	12	38(1)
Lao/Southeast Asia	2	4	6	1	4	5	2	5	7	2	9	11	29
Vietnamese/Southeast Asia	2	6	8		5	5	1	8	9	5	6	11	33
Cambodian/Southeast Asia		5	5	1	4	5	4	3	7	2	5	7	24
Burmese/Southeast Asia	3	2	5	3	3	6	1	7	8	1	8	9	28
Urdu/South Asia	2	7	9	4	3	7		6	6	6	6	12	34
Hindi/South Asia	4	7	11	6	10	16	5	6	11	4	9	13	51
Bengali/South Asia	2	3	5	4	3	7	1	3	4	4	7(1)	11(1)	27(1)
Arabic/West Asia・North Africa	5	10	15	6	10	16	8	12	20	5(1)	16	21(1)	72(1)
Persian/West Asia・North Africa	1	6	7	4	5	9	3	4	7	1	12	13	36
Turkish/West Asia・North Africa	1	7	8	2	5	7	5	5	10	2	10	12	37
Total	118	285	403	147	279	426	144	326	470	191	443	634	1,933
Number of Students to be enrolled	370			370			385			385			1,510

Note: Figures in parentheses () indicate the number of students who transferred to the university in the 3rd year.

School of International and Area Studies

(As of May 1, 2018)

Major	1st Year			2nd Year			3rd Year			4th Year			Total
	Male	Female	Total	Male	Female	Total	Male	Female	Total	Male	Female	Total	
Northwest Europe/English *	3	10	13	8	8	16	5(1)	12	17(1)	14(2)	15(2)	29(4)	75(5)
Central Europe/German	5	25	30	11	29	40	8	19	27	19	27	46	143
Central Europe/Polish		8	8		6	6	3	8	11	2	6	8	33
Central Europe/Czech	4	4	8	5	2	7	2	5	7	1	7	8	30
Southwest Europe/French *	5	23	28	11	24	35	8(1)	25	33(1)	11	37(2)	48(2)	144(3)
Southwest Europe/Italian	5	8	13	4	8	12	6	9	15	5	14	19	59
Southwest Europe/Spanish	5	7	12	2	13	15	4	13	17	9	19	28	72
Southwest Europe/Portuguese	2	2	4	1	3	4		2	2	1	6	7	17
Russia/Russian *	10	16	26	15	14	29	17	15(1)	32(1)	20(1)	15	35(1)	122(2)
North America/English *	13	8	21	6	9	15	19(2)	14(3)	33(5)	12(1)	8(1)	20(2)	89(7)
Latin America/Spanish *	5	15	20	10	16	26	5	14	19	18	19(1)	37(1)	102(1)
Latin America/Portuguese	3	5	8	2	4	6	5	2	7	7	5	12	33
Japan/Japanese *		4	4	2	3	5	2	5(1)	7(1)	2	10(2)	12(2)	28(3)
Japan/Japanese(International Students) *	15	9	24	7	11	18	10	11	21	8(1)	13(1)	21(2)	84(2)
East Asia/Chinese *	13	11	24	10	23	33	16(1)	20(1)	36(2)	20(2)	27(1)	47(3)	140(5)
East Asia/Korean *	4	13	17	4	10	14	2	15	17	5	18(1)	23(1)	71(1)
Central Asia/Mongolian	3	3	6	5	3	8	4	6	10	2	7	9	33
Central Asia/Russian	4	3	7	2	4	6	4	3	7	3	6	9	29
Southeast Asia/Indonesian	2	7	9	3	7	10	5	8	13	7	11	18	50
Southeast Asia/Malay	3	3	6	3	6	9	3	6	9	3	6	9	33
Southeast Asia/Filipino	2	6	8	1	6	7	5	7	12	2	4	6	33
Southeast Asia/Thai	4	6	10	1	9	10	3	7	10	4	10	14	44
Southeast Asia/Lao	1	4	5		5	5		5	5	3	3	6	21
Southeast Asia/Vietnamese	5	2	7	3	6	9	3	7	10	8	9	17	43
Southeast Asia/Cambodian		4	4	2	1	3	4	4	8	1	4	5	20
Southeast Asia/Burmese	3	2	5	3		3	3	4	7	2	6	8	23
South Asia/Urdu	3	4	7		4	4	3	7	10	6	5	11	32
South Asia/Hindi	4	6	10	7	7	14	3	9	12	7	7	14	50
South Asia/Bengali	2	3	5	1	3	4	1	7	8		7	7	24
West Asia・North Africa/Arabic	3	11	14	5	13	18	5	15	20	5	19	24	76
West Asia・North Africa/Persian	2	5	7	2	5	7	3	5	8	4	7	11	33
West Asia・North Africa/Turkish	4	4	8	3	6	9	1	7	8	4	4	8	33
Africa/English *	3	14	17	8	10	18	5(1)	20(5)	25(6)	10(2)	20(4)	30(6)	90(12)
Oceania/English *	9	1	10	7	5	12	5	8	13	7	13(1)	20(1)	55(1)
Total	149	256	405	154	283	437	172	324	496	232	394	626	1,964
Number of Students to be enrolled	375			375			390			390			1,530

Note: Figures in parentheses () indicate the number of students who transferred to the university in the 3rd year.

Number of Students

Total Number of Students (Undergraduate)

(As of May 1, 2018)

Major	1st Year			2nd Year			3rd Year			4th Year			Total		
	Male	Female	Total	Male	Female	Total	Male	Female	Total	Male	Female	Total	Male	Female	Total
School of Language and Culture Studies	118	285	403	147	279	426	144	326	470	191	443	634	600	1,333	1,933
School of Internaional and Area Studies	149	256	405	154	283	437	172	324	496	232	394	626	707	1,257	1,964
Faculty of Foreign Studies										4	6	10	4	6	10
Total	267	541	808	301	562	863	316	650	966	427	843	1,270	1,311	2,596	3,907

Total Number of Students (Graduate)

(As of May 1, 2018)

Major		1st Year			2nd Year			3rd Year			Total		
		Male	Female	Total	Male	Female	Total	Male	Female	Total	Male	Female	Total
Graduate Sshool of Global Studies	Master's Program	42	102	144	70	112	182				112	214	326
	Doctoral Program	19	21	40	17	27	44	52	67	119	88	115	203
Total		61	123	184	87	139	226	52	67	119	200	329	529

Number of Students Studying Abroad in Academic Year 2017

Number of Students Studying Abroad by Entering Year

Entering Year	Long-term	Short-term	Total
2012	3	1	4
2013	44	7	51
2014	436	19	455
2015	336	44	380
2016	33	204	237
2017	3	417	420
Total	855	692	1,547

Number of Students Studying Abroad by Faculty

Faculty	Long-term	Short-term	Total
School of Language and Culture Studies	416	329	745
School of International and Area Studies	439	363	802
Total	855	692	1,547

Number of Students Studying Abroad by Area and Type (Long-term Studying Abroad)

	Exchange Students	Study Abroad on a Leave of Absence	Study Abroad on Own Expenses	Internship	Total
Africa	9	5	11	10	35
Oceania	12	6	9	2	29
Europe	149	57	99	6	311
Russia, Central Asia	41	24	4	3	72
Middle East	13	14	9		36
Latin America	27	9	12	4	52
East Asia	41	31	9	1	82
Southeast Asia	46	34	29	24	133
South Asia		6	7	1	14
North America	24	14	49	4	91
Total	362	200	238	55	855

Number of Students Studying Abroad by Area and Type (Short-term Studying Abroad)

	Short-Visit	Study Tour	Japanese-Language Education Internship	Other Forms of Internship	Total
Africa	18				18
Oceania	51				51
Europe	207		2		209
Russia, Central Asia	24	15			39
Middle East	42				42
Latin America	13				13
East Asia	61	5	2	3	71
Southeast Asia	95		17		112
South Asia	11	6			17
North America	84	36			120
Total	606	62	21	3	692

International Students

International Students by Country/Region of Origin

(As of May 1, 2018)

Affiliation/Status Country/Region		Full-time Undergraduate Students				Full-time Graduate Students				Research Students						Jp Studies Students	Exchange Students		JLC Research Students	Teacher Trainees	Total		
		School of Lang. and Culture Studies		School of Inter. and Area Studies		MP		DP		School of Lang. and Culture Studies		School of Inter. and Area Studies		Graduate Students		M	P	P	M	M	M	P	Total
MEXT / Private		M	P	M	P	M	P	M	P	M	P	M	P	M	P	M	P	P	M	M	M	P	Total
Asia	India					1													1		2		2
	Indonesia	3				5		1	4	1							1				10	5	15
	Cambodia					1											2				1	2	3
	Singapore	1			1												2				1	3	4
	Sri Lanka					2		1	1							1					4	1	5
	Thailand	4		6		2								1			4		1		14	4	18
	Philippines			1													1				1	1	2
	Brunei																1					1	1
	Viet Nam				1	2		1		1	1		1			3					7	3	10
	Malaysia		2			1										1	2				2	4	6
	Myanmar					1			1					2			3				3	4	7
	Mongolia			1		2	1		1		7		1	1	1	1					5	11	16
	Laos			1		1											3				2	3	5
	South Korea		22		49	3		10						1	1	1	11			2	4	96	100
	China (Hong Kong)	1	2		1	1											3				1	7	8
	Taiwan		2		3	1		1		1		1					7	1			17		17
	China		29		18	2	78		37		48		17	1	4	2	7	10		1	6	248	254
Middle East	Afghanistan					1															1		1
	Israel					1													1		2		2
	Iraq					1			1												1	1	2
	Iran							1	3												1	3	4
	Syria							2						3							2	3	5
	Turkey							1		1							6		1		2	7	9
	Lebanon								1													1	1
Oceania	Australia	3															2				3	2	5
	New Zealand					1															1		1
Africa	Uganda								1													1	1
	Egypt					2											4				2	4	6
	Ghana						1	1									1				1	2	3
	DR Congo																			1	1		1
	Sierra Leone					1		1													2		2
	Tunisia			1																	1		1
	Nigeria																			1	1		1
	Madagascar																		1		1		1
	Mozambique							1	1												1	1	2
	Morocco								1													1	1
Europe	Ireland																6					6	6
	U.K.							1								1	12				2	12	14
	Italy	1														1	10	1	1		3	11	14
	Austria																2					2	2
	Netherlands								1								2					3	3
	Greece			1					1												1	1	2
	Switzerland																4					4	4
	Spain						1									1	4				1	5	6
	Slovenia																1					1	1
	Serbia								1							1	1				1	2	3
	Czech Republic															1	2				1	2	3
	Germany								1								7	1				9	9
	Hungary	1																			1		1
	France					1			1							1	14				2	15	17
	Bulgaria					1											1	1			1	2	3
	Belgium		1																			1	1
	Poland																	1	1		1	1	2
	Bosnia-Herzegovina																		1		1		1
	Portugal																1					1	1
	Latvia																1					1	1
	Lithuania					1															1		1
	Romania					1											2		1		2	2	4

Notes: MP: Master's program; DP: Doctoral Program

(As of May 1, 2018)

Affiliation/Status Country/Region		Full-time Undergraduate Students				Full-time Graduate Students				Research Students						Jp Studies Students	Exchange Students		JLC Research Students	Teacher Trainees	Total		
		School of Lang. and Culture Studies		School of Inter. and Area Studies		MP		DP		School of Lang. and Culture Studies		School of Inter. and Area Studies		Graduate Students		M	P	P	M	M	M	P	Total
MEXT / Private		M	P	M	P	M	P	M	P	M	P	M	P	M	P	M	P	P	M	M	M	P	Total
Russian Federation and NIS	Ukraine		1															1					2
	Uzbekistan		1			4	1		1	2				1		1	1				8	4	
	Kazakhstan					2						2					3				4	3	
	Georgia			1																	1		
	Tajikistan						1			1											1	1	
	Turkmenistan					1				1											2		
	Belarus	1						1													2		
	Russia					5			1	4		2		1		2	12	1		1	15	14	
North and Latin America	U.S.A.	1			1		1		1								5		1		2	8	
	Argentina					1													1		2		
	Ecuador							1													1		
	Canada	1							1								1				1	2	
	Cuba	2																	1		3		
	Colombia			2													2				2	2	
	Chile	1												1							2		
	Brazil	4		7		1		1	1	1						7	7				21	8	
	Venezuela			1																	1		
	Mexico																4						4
Total		24	60	22	74	45	89	14	73	11	58	4	20	9	9	25	165	17	12	6	172	565	
		180				221				111						25		165	17	12	6	172	565

Notes: MP: Master's program; DP: Doctoral Program

Pre-Undergraduate Students by Country/Region of Origin

(As of May 1, 2018)

Affiliation/Status Country/Region		Pre-undergraduate Students		
		Liberal Arts	Science	Total
Asia	India		4	4
	Indonesia		1	1
	Cambodia		1	1
	Singapore	2	1	3
	Thailand		2	2
	Pakistan		1	1
	Bangladesh		1	1
	Philippines		1	1
	Viet Nam	3	2	5
	Malaysia	1		1
	Mongolia	2	2	4
	South Korea	5	2	7
	China (Hong Kong)	1		1
Middle East	Iran		2	2
Oceania	Australia	1		1
	Vanuatu		1	1

Affiliation/Status Country/Region		Pre-undergraduate Students		
		Liberal Arts	Science	Total
Africa	Algeria		1	1
	Egypt		1	1
Europe	Sweden	1		1
	Hungary	2		2
	Finland	1		1
	Bulgaria	1		1
	Poland		1	1
	Romania	1		1
	Kazakhstan	1		1
	Belarus	1		1
	Russia	2		2
North and Latin America	El Salvador		1	1
	Brazil	1	3	4
	Peru		1	1
Total		26	29	55



TOKYO UNIVERSITY OF FOREIGN STUDIES

TEL +81(0)42-330-5111 FAX +81(0)42-330-5140
3-11-1 Asahi-cho, Fuchu-shi, Tokyo 183-8534 Japan
<http://www.tufs.ac.jp/english/>