

## 2020 年度秋学期 授業評価アンケート集計結果

### 【設問項目】

- 設問 1 授業にはどの程度出席しましたか。
- 設問 2 自分は授業に熱心に取り組んだ。
- 設問 3 シラバスの内容はわかりやすかった。
- 設問 4 シラバスに基づいて授業が進められた。
- 設問 5 内容が充実した授業だった。
- 設問 6 講義内容は分かりやすかった。
- 設問 7 今後の学習意欲がわく授業だった。
- 設問 8 教員の熱意が感じられた。
- 設問 9 教員のプレゼンテーションは明晰だった。
- 設問 10 授業がほぼ時間通りに行われた。
- 設問 11 アクティブラーニングの内容は適切だった。
- 設問 12 授業の履修前と比べて自分の知識や能力に伸張があった。
- 設問 13 総合的に見てこの授業に満足した。
- 設問 14 (オンライン授業であった場合) この授業のオンライン実施の内容や方法は適切だった。

### 【回答選択肢】

設問 1

- 1 (9割以上) 2 (8~9割程度) 3 (6~7割程度) 4 (5割程度) 5 (4割以下)

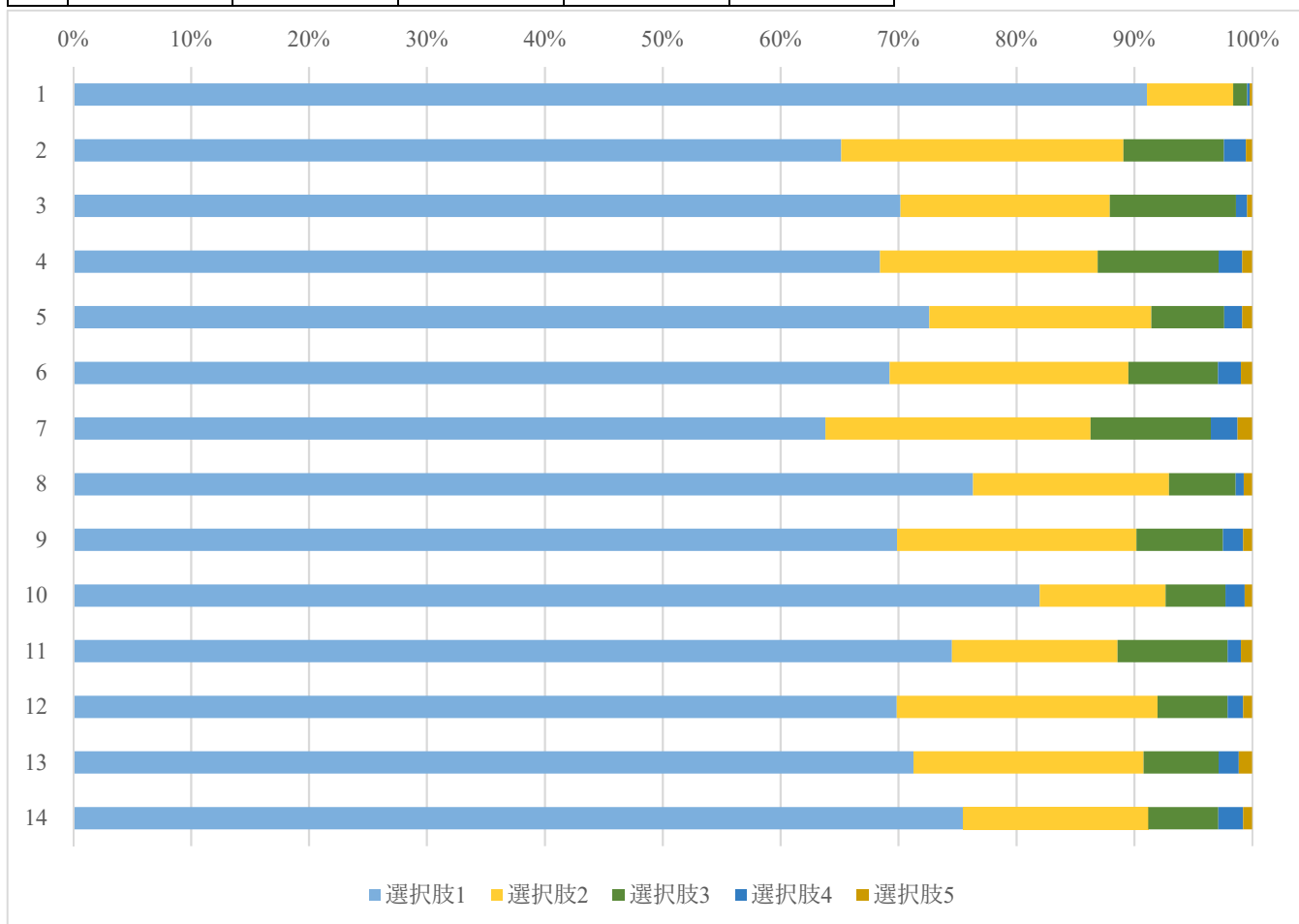
設問 2~14

- 1 (そう思う) 2 (ややそう思う) 3 (ふつう) 4 (あまり思わない) 5 (思わない)

# 1. 世界教養プログラム科目

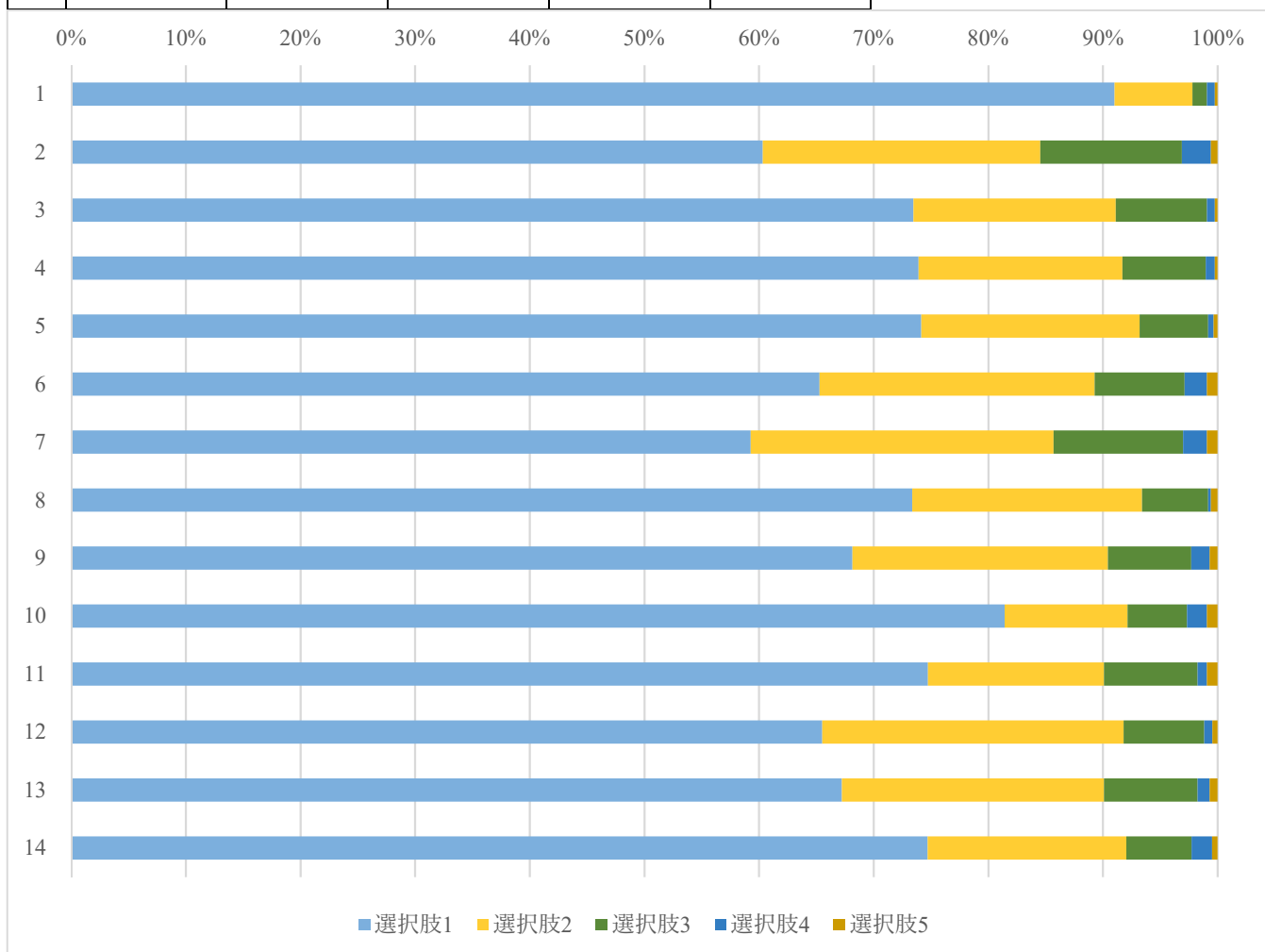
## 1.0. 世界教養プログラム（全体）

Q	選択肢 1	選択肢 2	選択肢 3	選択肢 4	選択肢 5
1	91.1%	7.3%	1.2%	0.2%	0.2%
2	65.2%	23.9%	8.5%	1.9%	0.5%
3	70.2%	17.7%	10.7%	0.9%	0.4%
4	68.4%	18.5%	10.3%	2.0%	0.8%
5	72.6%	18.8%	6.2%	1.5%	0.9%
6	69.3%	20.3%	7.6%	1.9%	1.0%
7	63.8%	22.5%	10.2%	2.3%	1.3%
8	76.3%	16.6%	5.7%	0.7%	0.7%
9	69.9%	20.3%	7.3%	1.7%	0.8%
10	82.0%	10.7%	5.1%	1.6%	0.6%
11	74.5%	14.0%	9.3%	1.1%	1.0%
12	69.8%	22.1%	5.9%	1.3%	0.8%
13	71.3%	19.5%	6.4%	1.7%	1.1%
14	75.5%	15.7%	5.9%	2.1%	0.8%



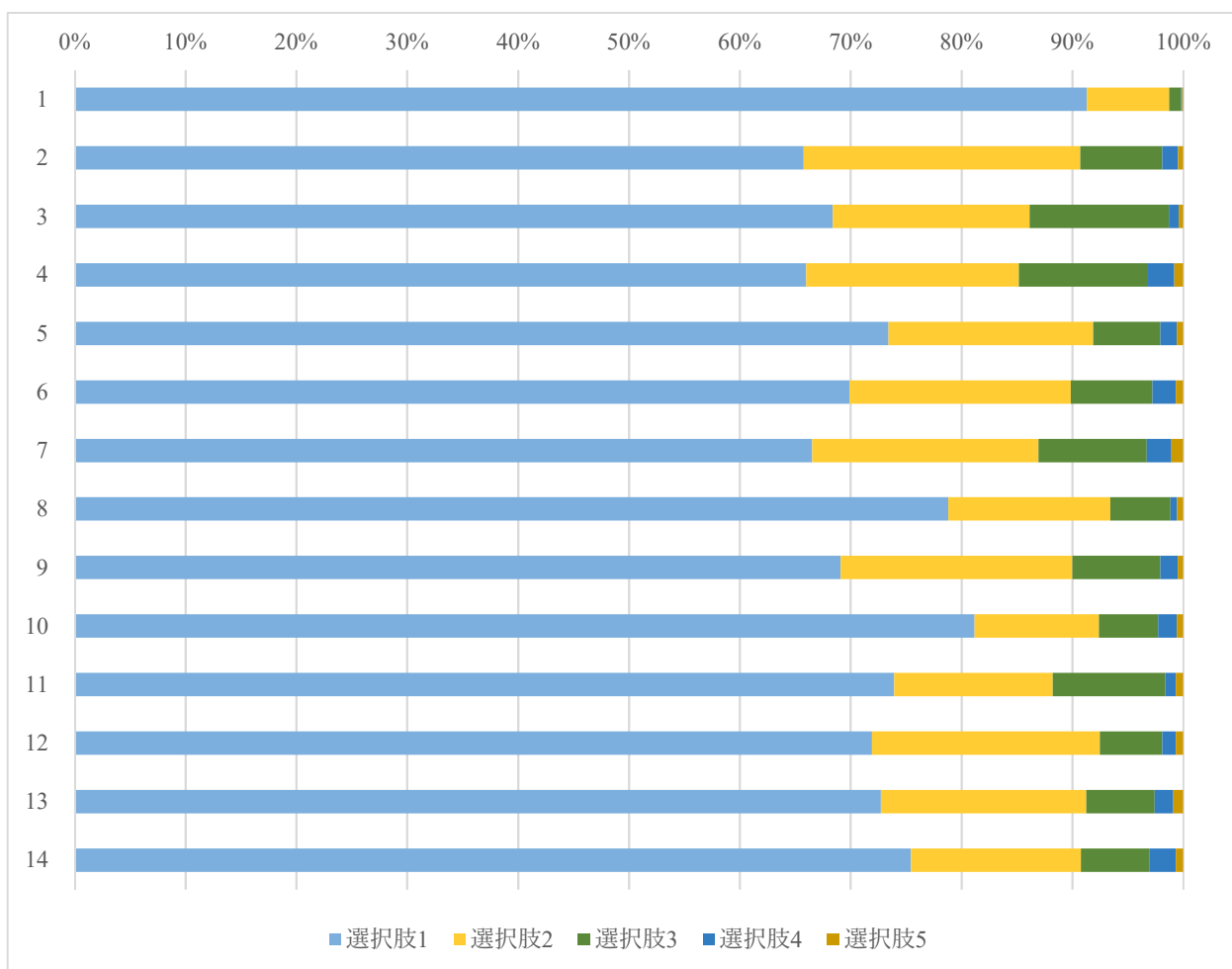
### 1.1. 教養科目

Q	選択肢 1	選択肢 2	選択肢 3	選択肢 4	選択肢 5
1	91.0%	6.8%	1.3%	0.7%	0.2%
2	60.3%	24.2%	12.3%	2.5%	0.6%
3	73.5%	17.6%	8.0%	0.7%	0.2%
4	73.9%	17.8%	7.3%	0.8%	0.2%
5	74.2%	19.0%	6.0%	0.5%	0.3%
6	65.3%	24.0%	7.8%	2.0%	0.9%
7	59.3%	26.4%	11.3%	2.1%	0.9%
8	73.4%	20.1%	5.8%	0.2%	0.6%
9	68.2%	22.3%	7.3%	1.6%	0.7%
10	81.4%	10.7%	5.2%	1.7%	0.9%
11	74.7%	15.3%	8.2%	0.8%	0.9%
12	65.5%	26.3%	7.0%	0.7%	0.5%
13	67.2%	22.8%	8.2%	1.0%	0.7%
14	74.7%	17.3%	5.7%	1.8%	0.5%



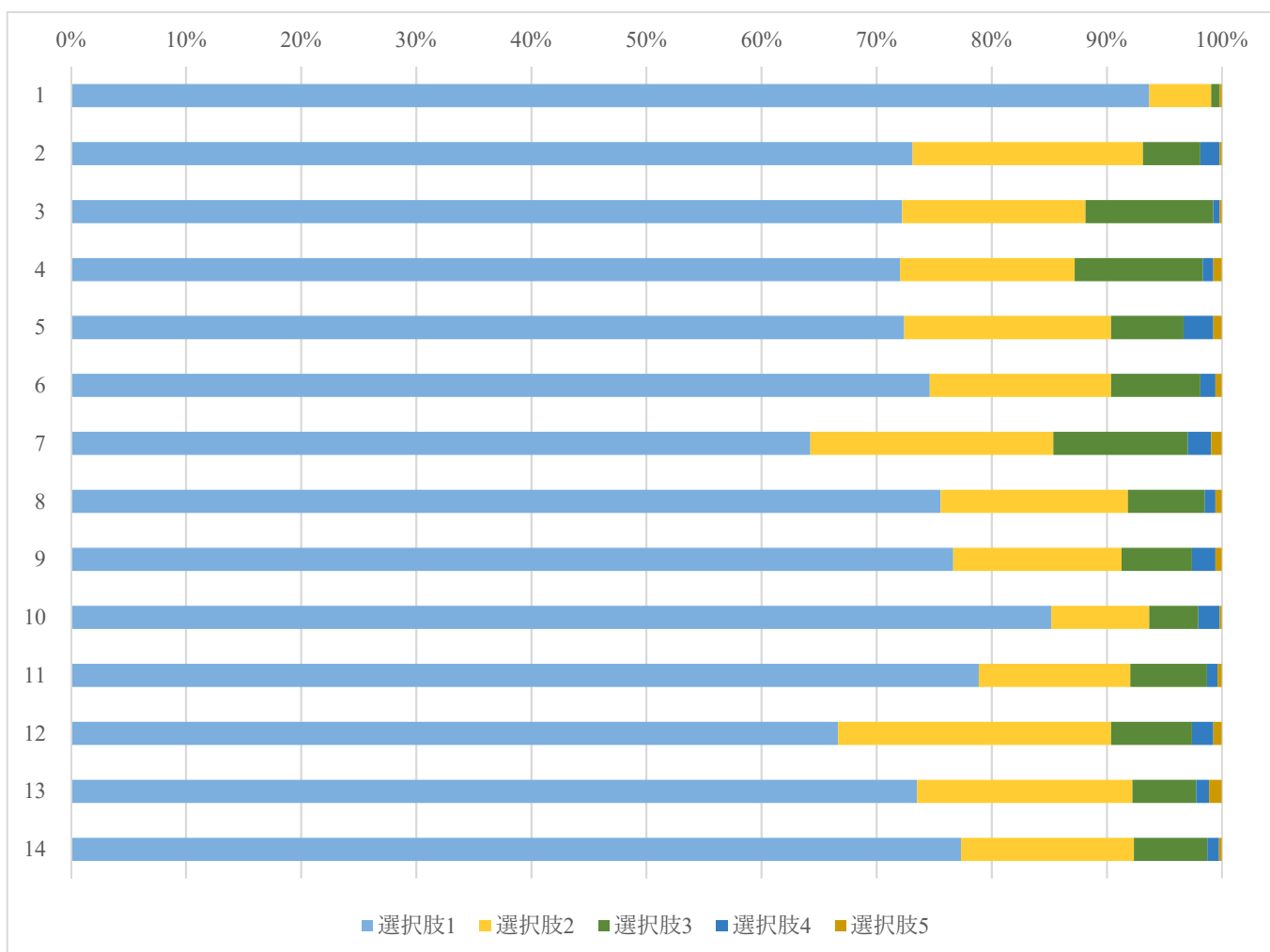
## 1.2. 専攻言語

Q	選択肢 1	選択肢 2	選択肢 3	選択肢 4	選択肢 5
1	91.3%	7.4%	1.1%	0.1%	0.1%
2	65.8%	24.9%	7.4%	1.4%	0.5%
3	68.4%	17.8%	12.5%	0.9%	0.4%
4	66.0%	19.2%	11.7%	2.4%	0.8%
5	73.4%	18.5%	6.0%	1.5%	0.6%
6	69.9%	20.0%	7.3%	2.1%	0.7%
7	66.5%	20.4%	9.8%	2.2%	1.1%
8	78.8%	14.6%	5.4%	0.6%	0.5%
9	69.1%	20.9%	7.9%	1.6%	0.5%
10	81.2%	11.2%	5.3%	1.7%	0.6%
11	73.9%	14.3%	10.2%	0.9%	0.7%
12	71.9%	20.6%	5.6%	1.2%	0.7%
13	72.7%	18.5%	6.2%	1.7%	0.9%
14	75.4%	15.3%	6.2%	2.4%	0.7%



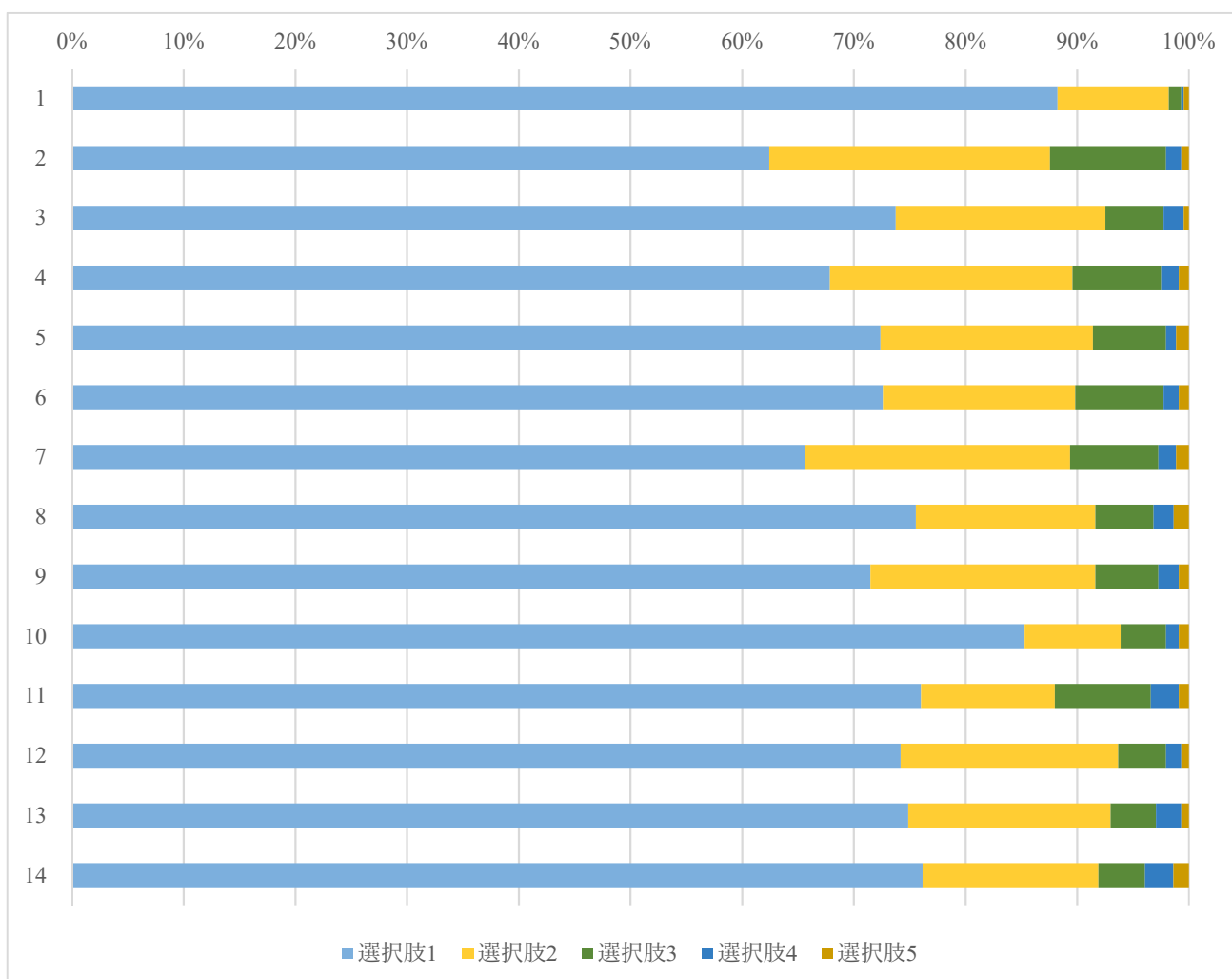
### 1.3. GLIP 英語

Q	選択肢 1	選択肢 2	選択肢 3	選択肢 4	選択肢 5
1	93.7%	5.4%	0.7%	0.0%	0.2%
2	73.1%	20.0%	5.0%	1.7%	0.2%
3	72.2%	15.9%	11.1%	0.6%	0.2%
4	72.0%	15.2%	11.1%	0.9%	0.7%
5	72.4%	18.0%	6.3%	2.6%	0.7%
6	74.6%	15.7%	7.8%	1.3%	0.6%
7	64.3%	21.1%	11.7%	2.0%	0.9%
8	75.6%	16.3%	6.7%	0.9%	0.6%
9	76.7%	14.6%	6.1%	2.0%	0.6%
10	85.2%	8.5%	4.3%	1.9%	0.2%
11	78.9%	13.1%	6.7%	0.9%	0.4%
12	66.7%	23.7%	7.0%	1.9%	0.7%
13	73.5%	18.7%	5.6%	1.1%	1.1%
14	77.4%	15.0%	6.4%	1.0%	0.3%



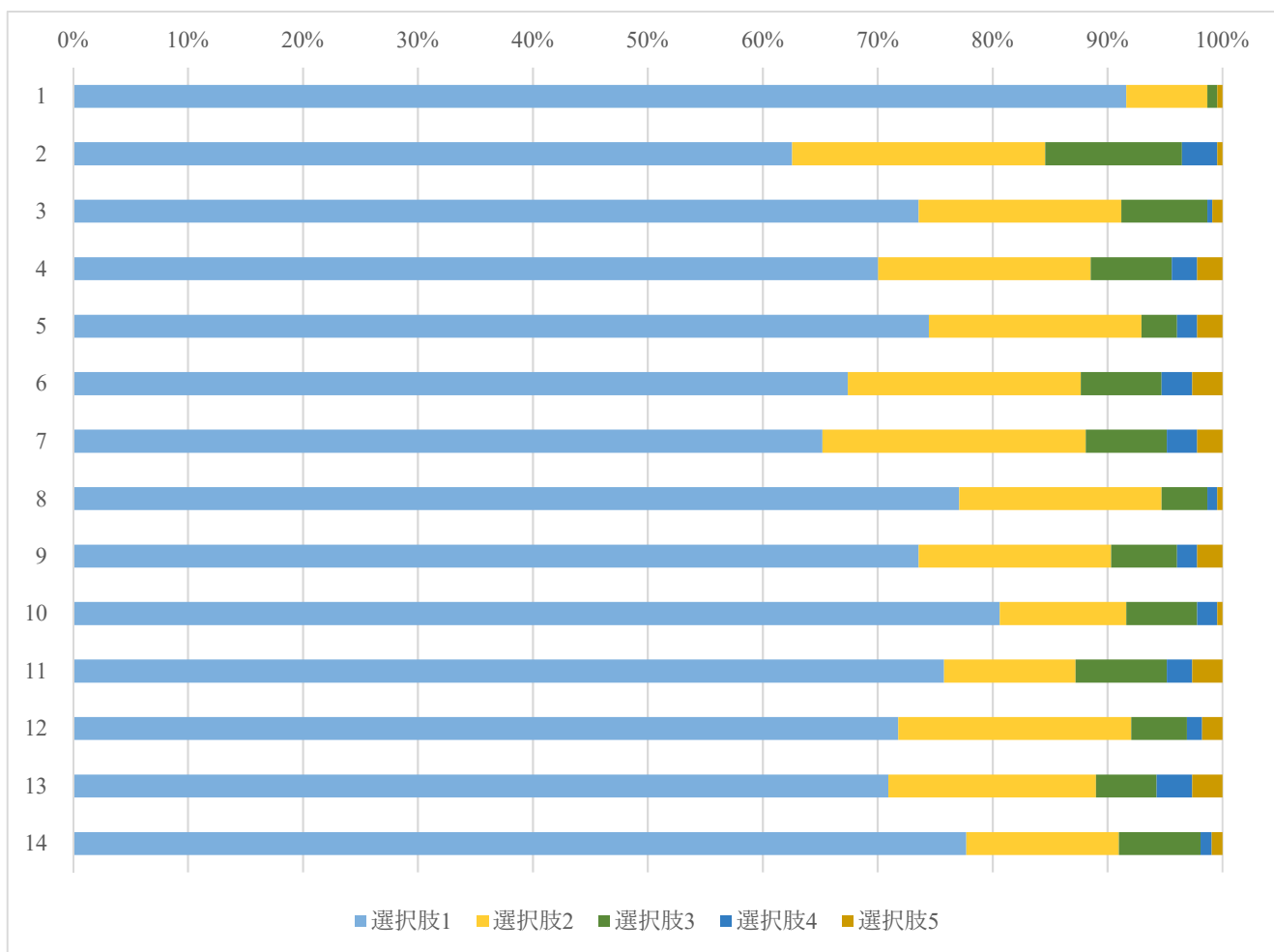
#### 1.4. 教養外国語

Q	選択肢 1	選択肢 2	選択肢 3	選択肢 4	選択肢 5
1	88.2%	10.0%	1.1%	0.2%	0.5%
2	62.4%	25.1%	10.4%	1.4%	0.7%
3	73.8%	18.8%	5.2%	1.8%	0.5%
4	67.9%	21.7%	7.9%	1.6%	0.9%
5	72.4%	19.0%	6.6%	0.9%	1.1%
6	72.6%	17.2%	7.9%	1.4%	0.9%
7	65.6%	23.8%	7.9%	1.6%	1.1%
8	75.6%	16.1%	5.2%	1.8%	1.4%
9	71.5%	20.1%	5.7%	1.8%	0.9%
10	85.3%	8.6%	4.1%	1.1%	0.9%
11	76.0%	12.0%	8.6%	2.5%	0.9%
12	74.2%	19.5%	4.3%	1.4%	0.7%
13	74.9%	18.1%	4.1%	2.3%	0.7%
14	76.2%	15.7%	4.2%	2.5%	1.4%



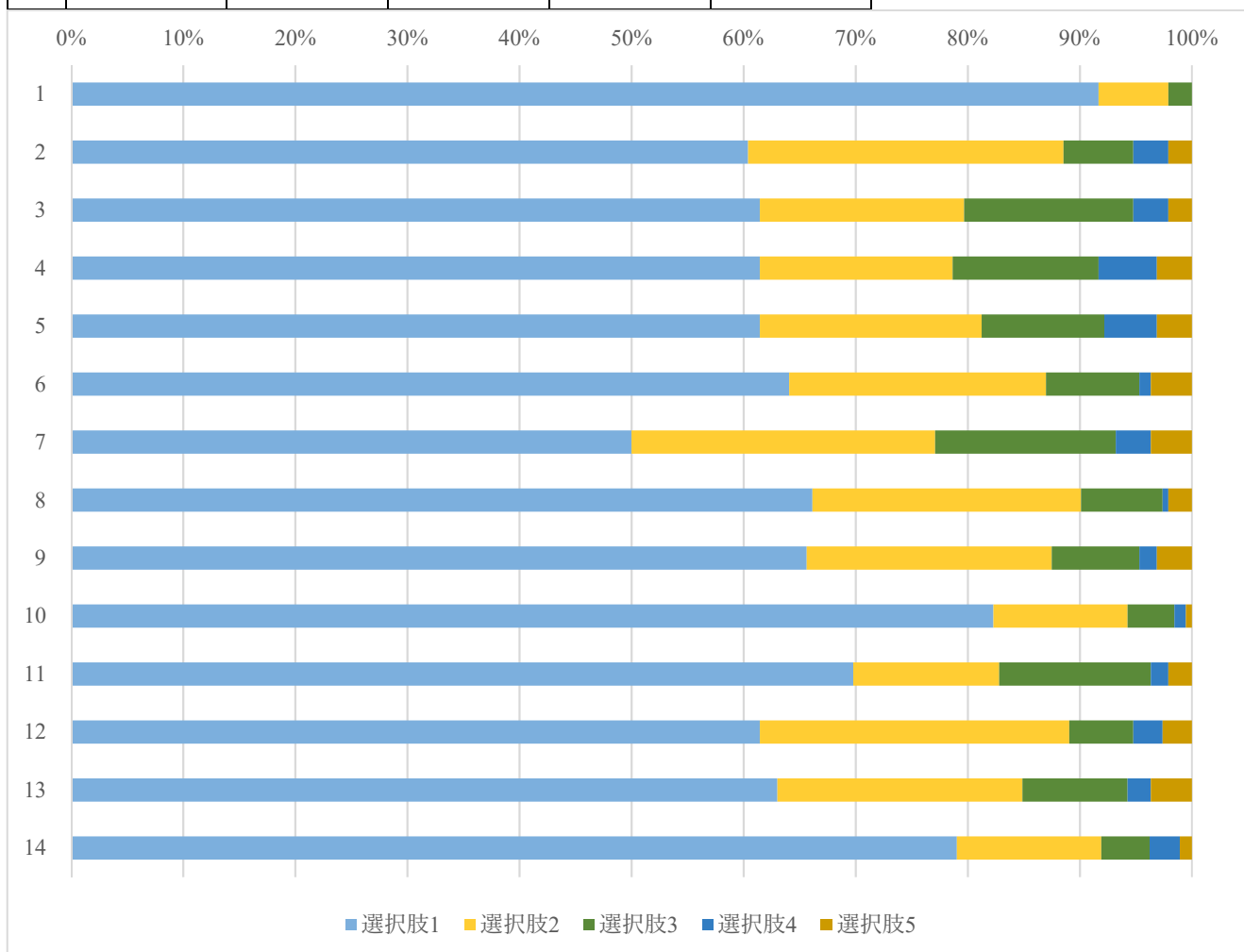
### 1.5. 地域基礎

Q	選択肢 1	選択肢 2	選択肢 3	選択肢 4	選択肢 5
1	91.6%	7.0%	0.9%	0.0%	0.4%
2	62.6%	22.0%	11.9%	3.1%	0.4%
3	73.6%	17.6%	7.5%	0.4%	0.9%
4	70.0%	18.5%	7.0%	2.2%	2.2%
5	74.4%	18.5%	3.1%	1.8%	2.2%
6	67.4%	20.3%	7.0%	2.6%	2.6%
7	65.2%	22.9%	7.0%	2.6%	2.2%
8	77.1%	17.6%	4.0%	0.9%	0.4%
9	73.6%	16.7%	5.7%	1.8%	2.2%
10	80.6%	11.0%	6.2%	1.8%	0.4%
11	75.8%	11.5%	7.9%	2.2%	2.6%
12	71.8%	20.3%	4.8%	1.3%	1.8%
13	70.9%	18.1%	5.3%	3.1%	2.6%
14	77.7%	13.3%	7.1%	0.9%	0.9%



### 1.6. 基礎演習

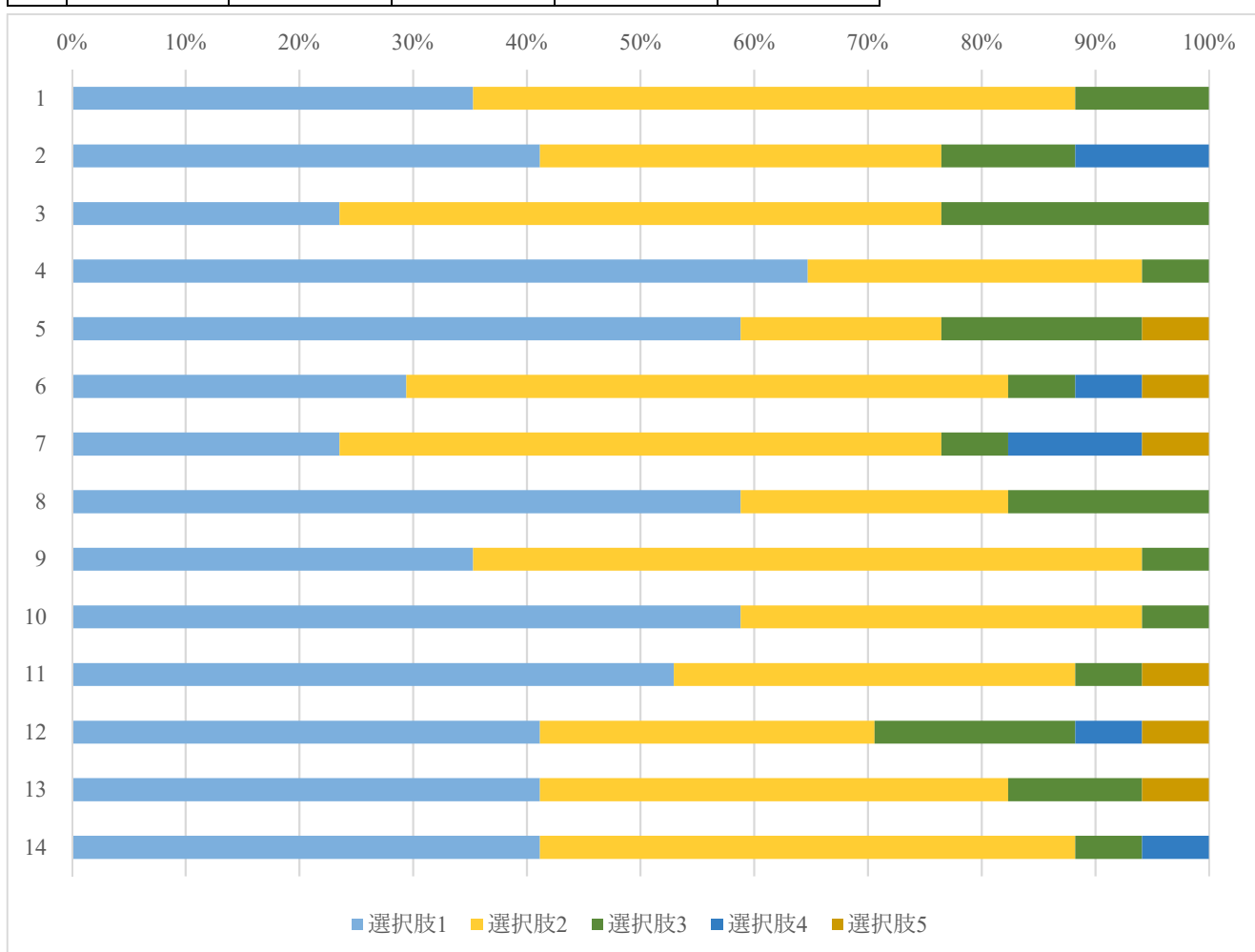
Q	選択肢 1	選択肢 2	選択肢 3	選択肢 4	選択肢 5
1	91.7%	6.3%	2.1%	0.0%	0.0%
2	60.4%	28.1%	6.3%	3.1%	2.1%
3	61.5%	18.2%	15.1%	3.1%	2.1%
4	61.5%	17.2%	13.0%	5.2%	3.1%
5	61.5%	19.8%	10.9%	4.7%	3.1%
6	64.1%	22.9%	8.3%	1.0%	3.6%
7	50.0%	27.1%	16.1%	3.1%	3.6%
8	66.1%	24.0%	7.3%	0.5%	2.1%
9	65.6%	21.9%	7.8%	1.6%	3.1%
10	82.3%	12.0%	4.2%	1.0%	0.5%
11	69.8%	13.0%	13.5%	1.6%	2.1%
12	61.5%	27.6%	5.7%	2.6%	2.6%
13	63.0%	21.9%	9.4%	2.1%	3.6%
14	79.0%	12.9%	4.3%	2.7%	1.1%





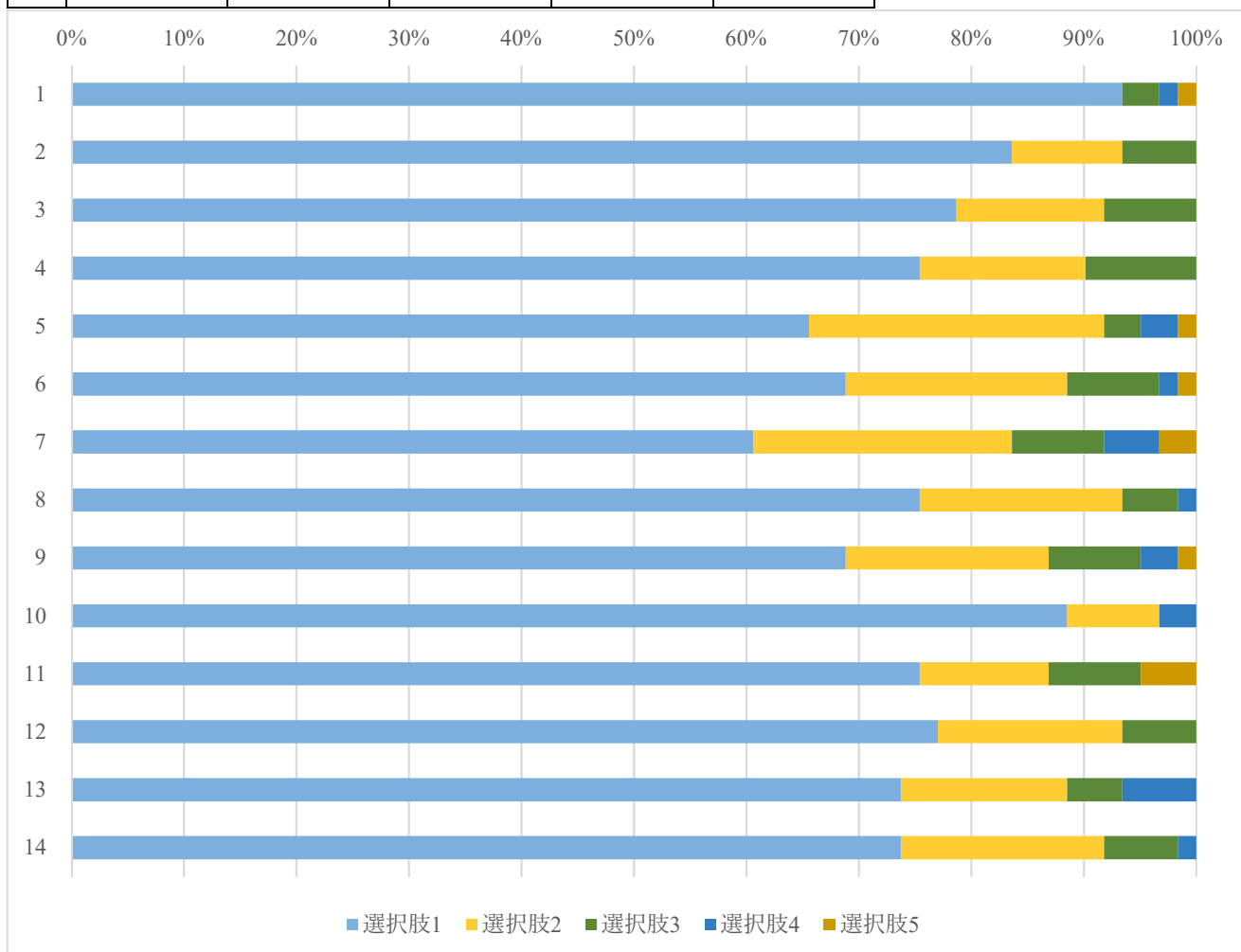
### 1.7. 基礎日本語

Q	選択肢 1	選択肢 2	選択肢 3	選択肢 4	選択肢 5
1	35.3%	52.9%	11.8%	0.0%	0.0%
2	41.2%	35.3%	11.8%	11.8%	0.0%
3	23.5%	52.9%	23.5%	0.0%	0.0%
4	64.7%	29.4%	5.9%	0.0%	0.0%
5	58.8%	17.6%	17.6%	0.0%	5.9%
6	29.4%	52.9%	5.9%	5.9%	5.9%
7	23.5%	52.9%	5.9%	11.8%	5.9%
8	58.8%	23.5%	17.6%	0.0%	0.0%
9	35.3%	58.8%	5.9%	0.0%	0.0%
10	58.8%	35.3%	5.9%	0.0%	0.0%
11	52.9%	35.3%	5.9%	0.0%	5.9%
12	41.2%	29.4%	17.6%	5.9%	5.9%
13	41.2%	41.2%	11.8%	0.0%	5.9%
14	41.2%	47.1%	5.9%	5.9%	0.0%



1.8. 専門日本語

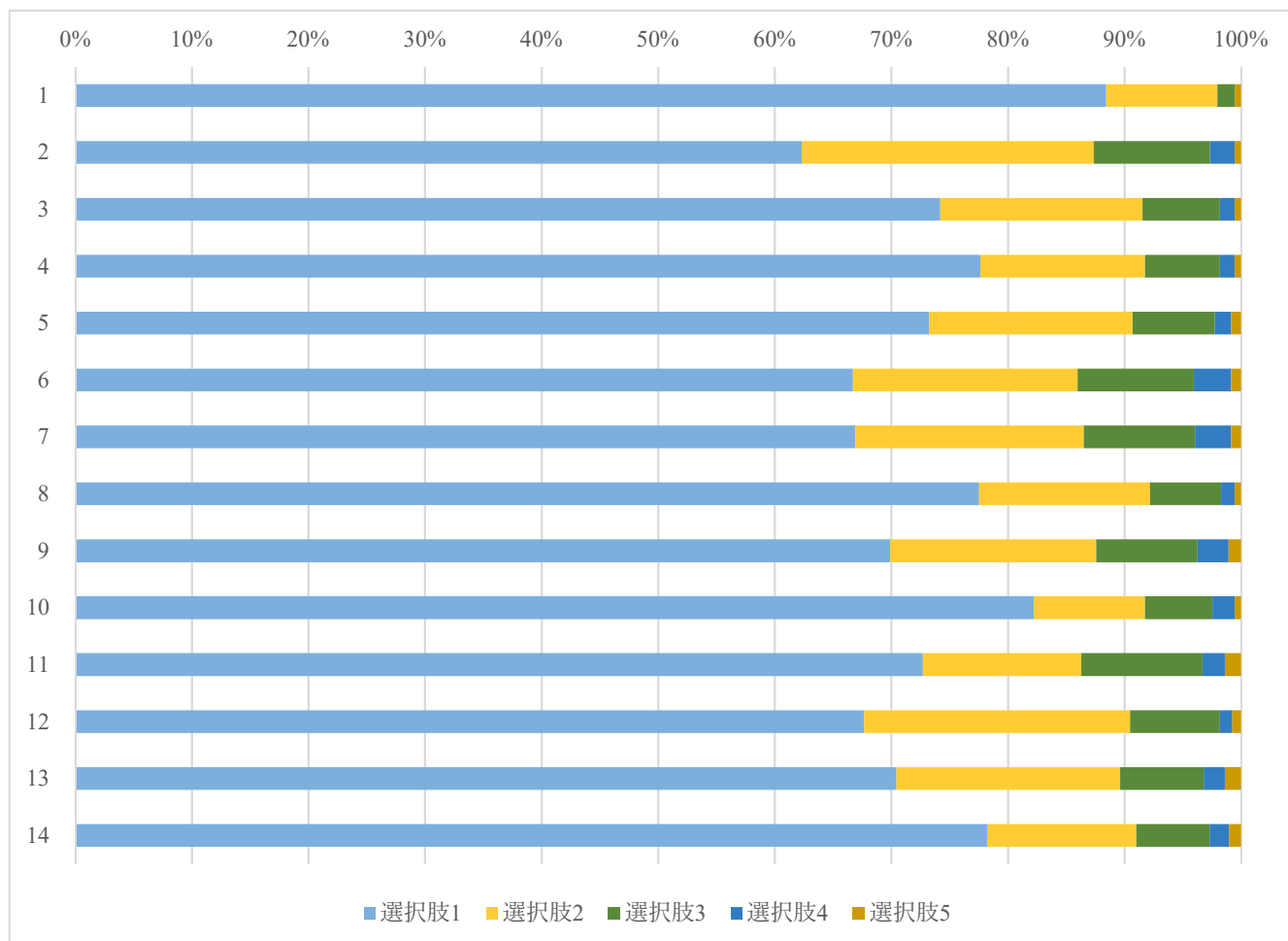
Q	選択肢 1	選択肢 2	選択肢 3	選択肢 4	選択肢 5
1	93.4%	0.0%	3.3%	1.6%	1.6%
2	83.6%	9.8%	6.6%	0.0%	0.0%
3	78.7%	13.1%	8.2%	0.0%	0.0%
4	75.4%	14.8%	9.8%	0.0%	0.0%
5	65.6%	26.2%	3.3%	3.3%	1.6%
6	68.9%	19.7%	8.2%	1.6%	1.6%
7	60.7%	23.0%	8.2%	4.9%	3.3%
8	75.4%	18.0%	4.9%	1.6%	0.0%
9	68.9%	18.0%	8.2%	3.3%	1.6%
10	88.5%	8.2%	0.0%	3.3%	0.0%
11	75.4%	11.5%	8.2%	0.0%	4.9%
12	77.0%	16.4%	6.6%	0.0%	0.0%
13	73.8%	14.8%	4.9%	6.6%	0.0%
14	73.8%	18.0%	6.6%	1.6%	0.0%



## 2. 言語文化学部

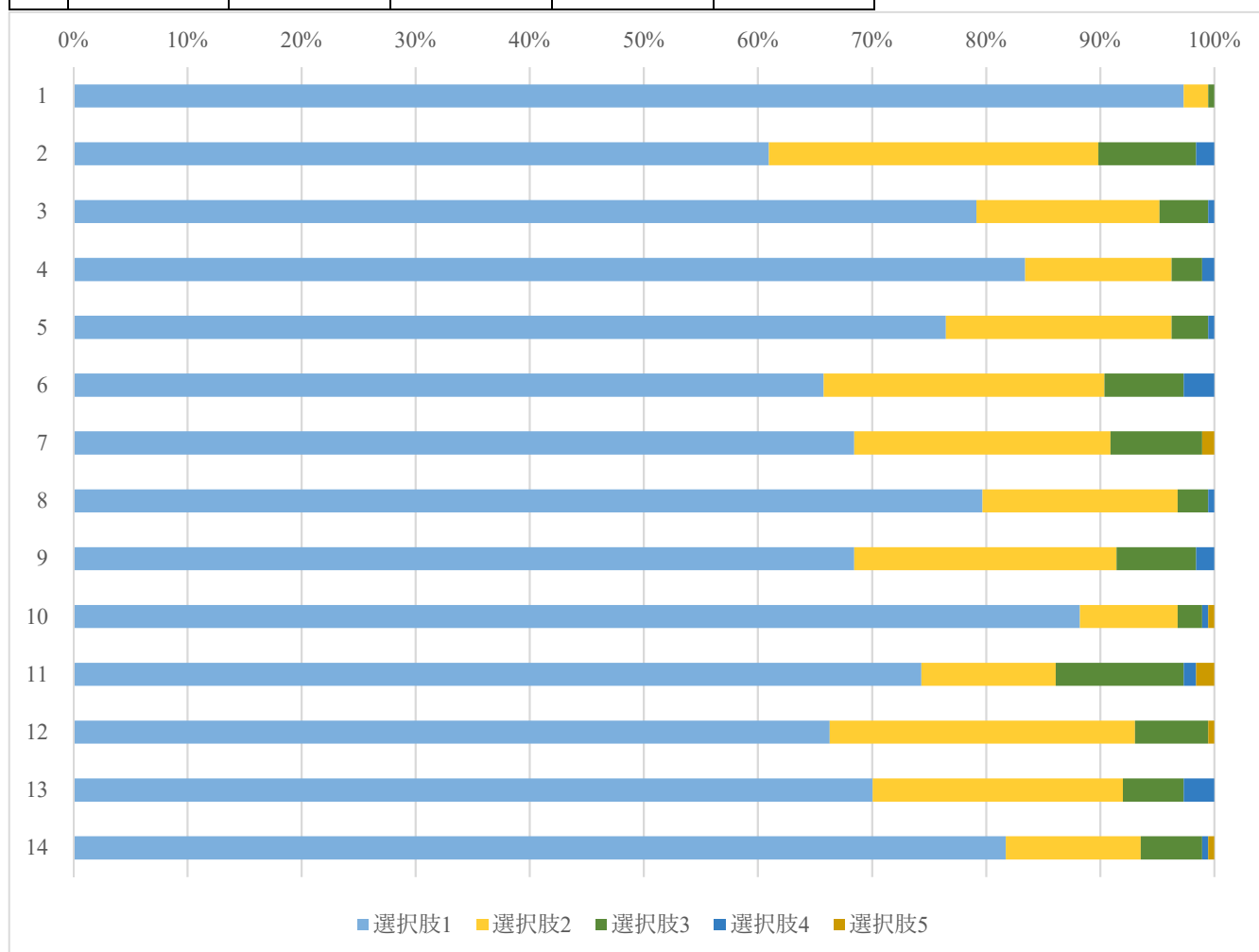
### 2.0. 専修プログラム（全体）

Q	選択肢 1	選択肢 2	選択肢 3	選択肢 4	選択肢 5
1	88.4%	9.5%	1.5%	0.0%	0.5%
2	62.3%	25.1%	10.0%	2.1%	0.5%
3	74.2%	17.3%	6.6%	1.3%	0.5%
4	77.6%	14.1%	6.4%	1.3%	0.5%
5	73.2%	17.5%	7.1%	1.4%	0.9%
6	66.7%	19.3%	10.0%	3.2%	0.9%
7	66.9%	19.6%	9.5%	3.1%	0.9%
8	77.5%	14.7%	6.1%	1.2%	0.5%
9	69.9%	17.7%	8.7%	2.7%	1.1%
10	82.2%	9.5%	5.8%	1.9%	0.5%
11	72.7%	13.6%	10.4%	1.9%	1.4%
12	67.7%	22.8%	7.7%	1.1%	0.7%
13	70.4%	19.2%	7.2%	1.8%	1.4%
14	78.2%	12.8%	6.3%	1.7%	1.0%



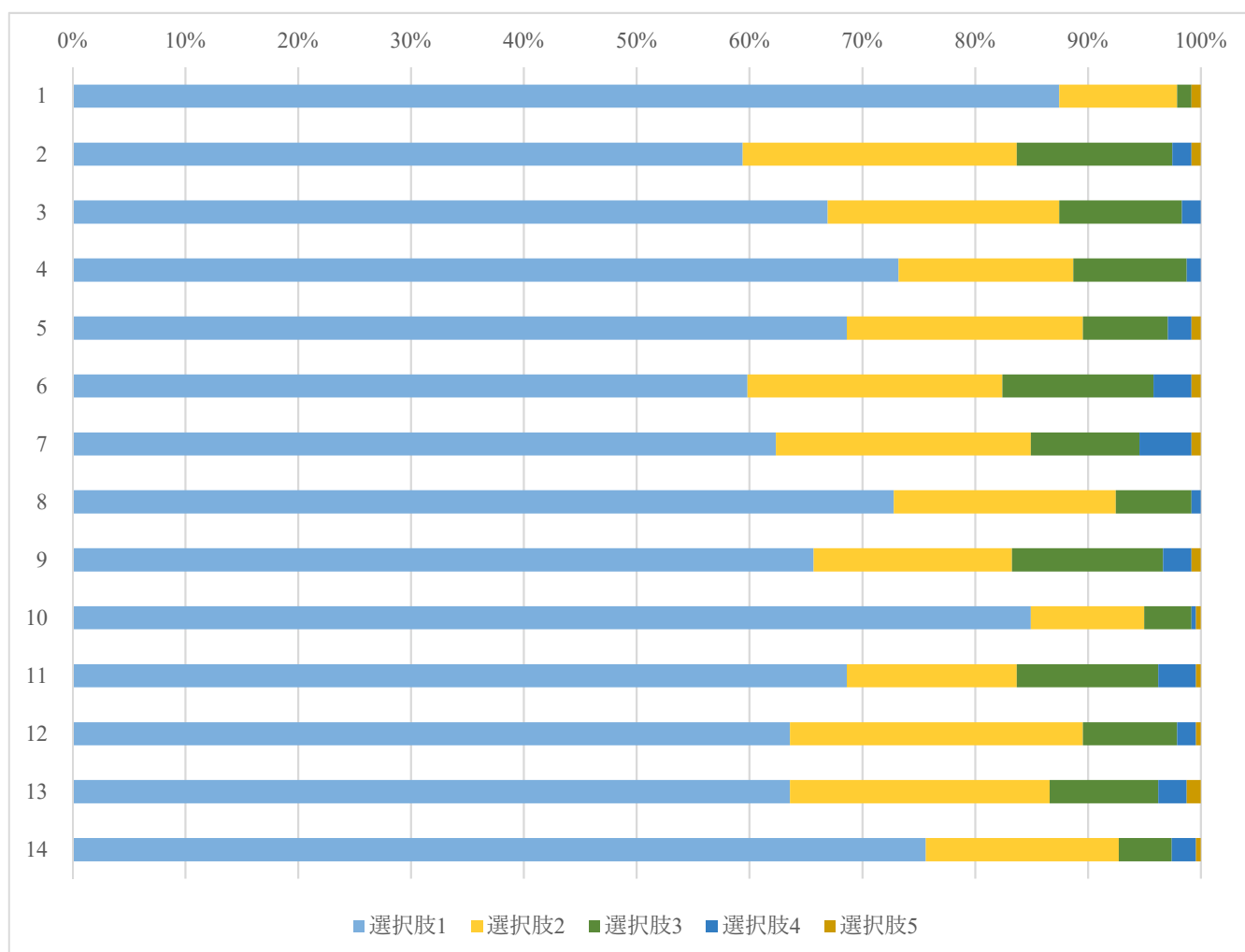
## 2.1. 導入科目

Q	選択肢 1	選択肢 2	選択肢 3	選択肢 4	選択肢 5
1	97.3%	2.1%	0.5%	0.0%	0.0%
2	61.0%	28.9%	8.6%	1.6%	0.0%
3	79.1%	16.0%	4.3%	0.5%	0.0%
4	83.4%	12.8%	2.7%	1.1%	0.0%
5	76.5%	19.8%	3.2%	0.5%	0.0%
6	65.8%	24.6%	7.0%	2.7%	0.0%
7	68.4%	22.5%	8.0%	0.0%	1.1%
8	79.7%	17.1%	2.7%	0.5%	0.0%
9	68.4%	23.0%	7.0%	1.6%	0.0%
10	88.2%	8.6%	2.1%	0.5%	0.5%
11	74.3%	11.8%	11.2%	1.1%	1.6%
12	66.3%	26.7%	6.4%	0.0%	0.5%
13	70.1%	21.9%	5.3%	2.7%	0.0%
14	81.7%	11.8%	5.4%	0.5%	0.5%



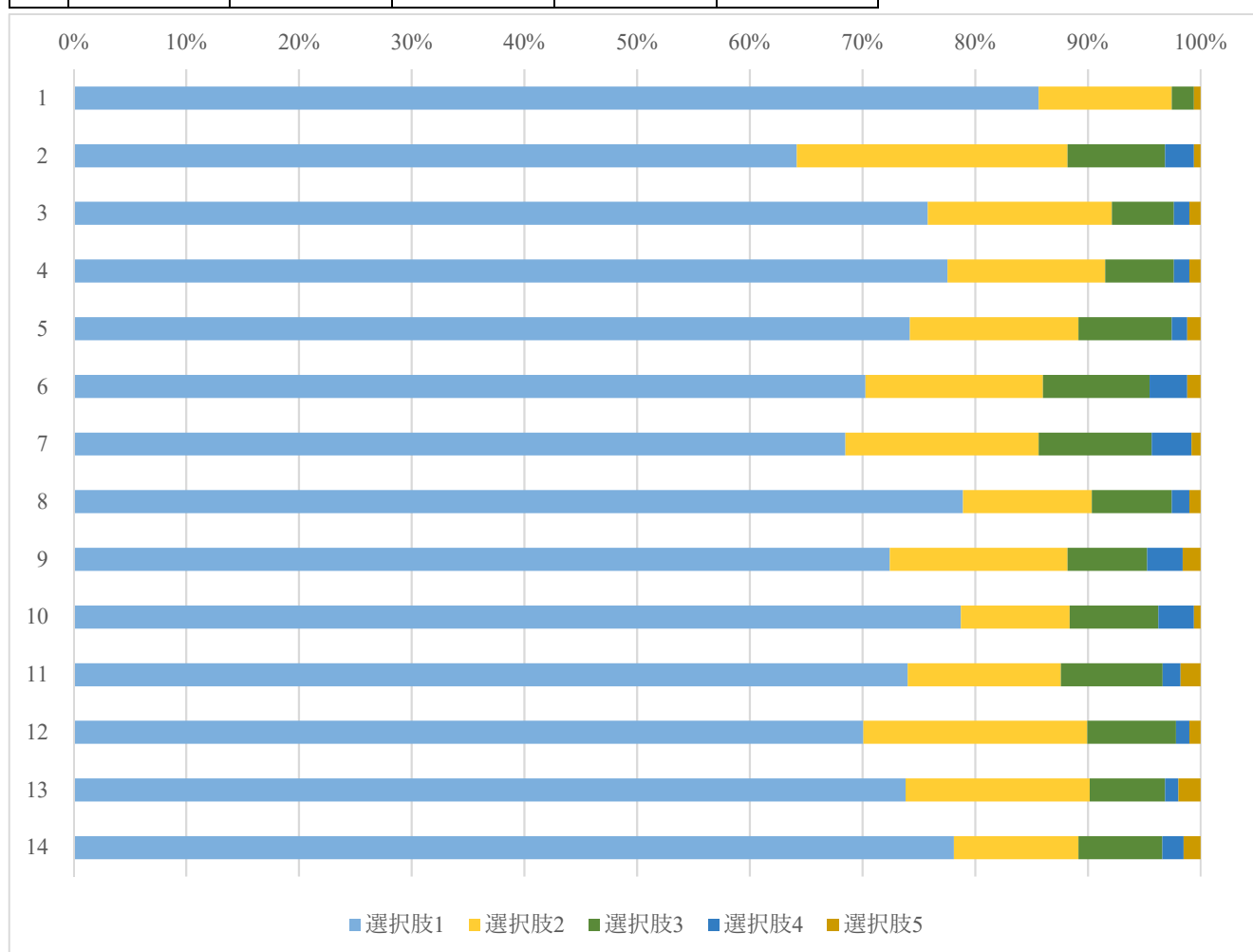
## 2.2. 概論科目

Q	選択肢 1	選択肢 2	選択肢 3	選択肢 4	選択肢 5
1	87.4%	10.5%	1.3%	0.0%	0.8%
2	59.4%	24.3%	13.8%	1.7%	0.8%
3	66.9%	20.5%	10.9%	1.7%	0.0%
4	73.2%	15.5%	10.0%	1.3%	0.0%
5	68.6%	20.9%	7.5%	2.1%	0.8%
6	59.8%	22.6%	13.4%	3.3%	0.8%
7	62.3%	22.6%	9.6%	4.6%	0.8%
8	72.8%	19.7%	6.7%	0.8%	0.0%
9	65.7%	17.6%	13.4%	2.5%	0.8%
10	84.9%	10.0%	4.2%	0.4%	0.4%
11	68.6%	15.1%	12.6%	3.3%	0.4%
12	63.6%	25.9%	8.4%	1.7%	0.4%
13	63.6%	23.0%	9.6%	2.5%	1.3%
14	75.6%	17.1%	4.7%	2.1%	0.4%



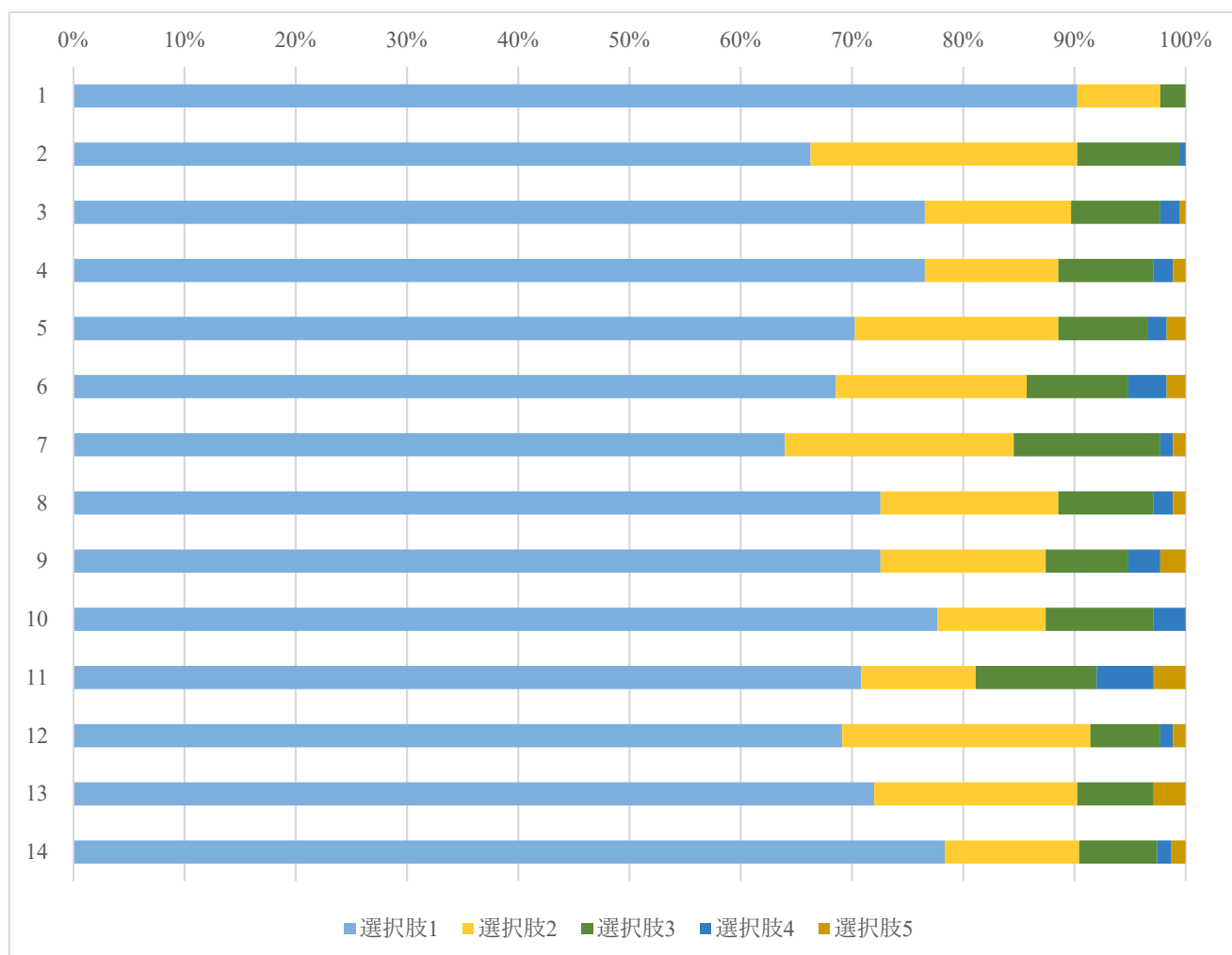
### 2.3. 選択科目

Q	選択肢 1	選択肢 2	選択肢 3	選択肢 4	選択肢 5
1	85.6%	11.8%	2.0%	0.0%	0.6%
2	64.2%	24.0%	8.7%	2.6%	0.6%
3	75.8%	16.3%	5.5%	1.4%	1.0%
4	77.6%	14.0%	6.1%	1.4%	1.0%
5	74.2%	15.0%	8.3%	1.4%	1.2%
6	70.3%	15.7%	9.4%	3.3%	1.2%
7	68.5%	17.1%	10.0%	3.5%	0.8%
8	78.9%	11.4%	7.1%	1.6%	1.0%
9	72.4%	15.7%	7.1%	3.1%	1.6%
10	78.7%	9.6%	7.9%	3.1%	0.6%
11	74.0%	13.6%	9.1%	1.6%	1.8%
12	70.1%	19.9%	7.9%	1.2%	1.0%
13	73.8%	16.3%	6.7%	1.2%	2.0%
14	78.1%	11.0%	7.4%	1.9%	1.5%



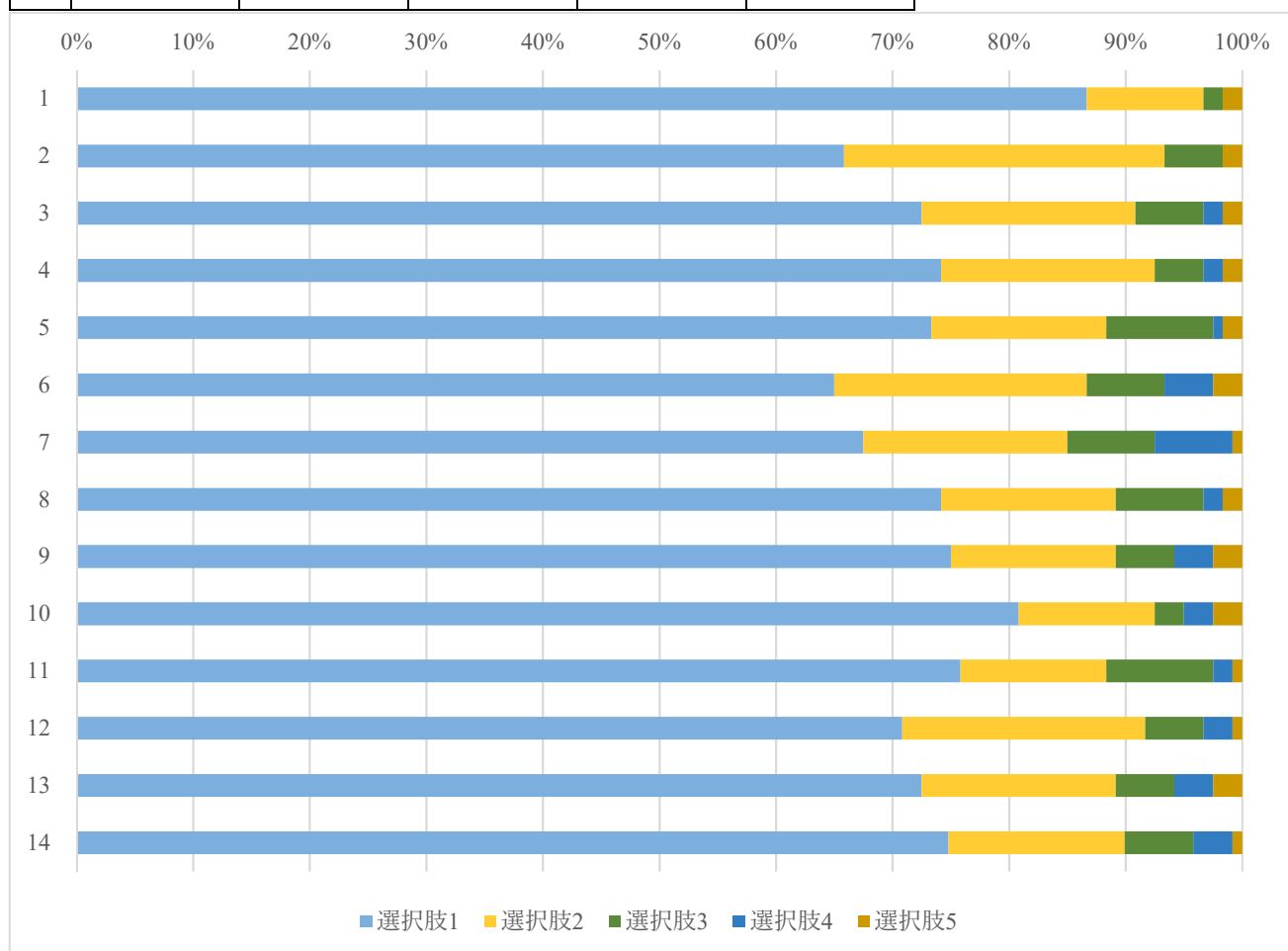
## 2.4. 言語情報コース

Q	選択肢 1	選択肢 2	選択肢 3	選択肢 4	選択肢 5
1	90.3%	7.4%	2.3%	0.0%	0.0%
2	66.3%	24.0%	9.1%	0.6%	0.0%
3	76.6%	13.1%	8.0%	1.7%	0.6%
4	76.6%	12.0%	8.6%	1.7%	1.1%
5	70.3%	18.3%	8.0%	1.7%	1.7%
6	68.6%	17.1%	9.1%	3.4%	1.7%
7	64.0%	20.6%	13.1%	1.1%	1.1%
8	72.6%	16.0%	8.6%	1.7%	1.1%
9	72.6%	14.9%	7.4%	2.9%	2.3%
10	77.7%	9.7%	9.7%	2.9%	0.0%
11	70.9%	10.3%	10.9%	5.1%	2.9%
12	69.1%	22.3%	6.3%	1.1%	1.1%
13	72.0%	18.3%	6.9%	0.0%	2.9%
14	78.3%	12.1%	7.0%	1.3%	1.3%



## 2.5. GC コース

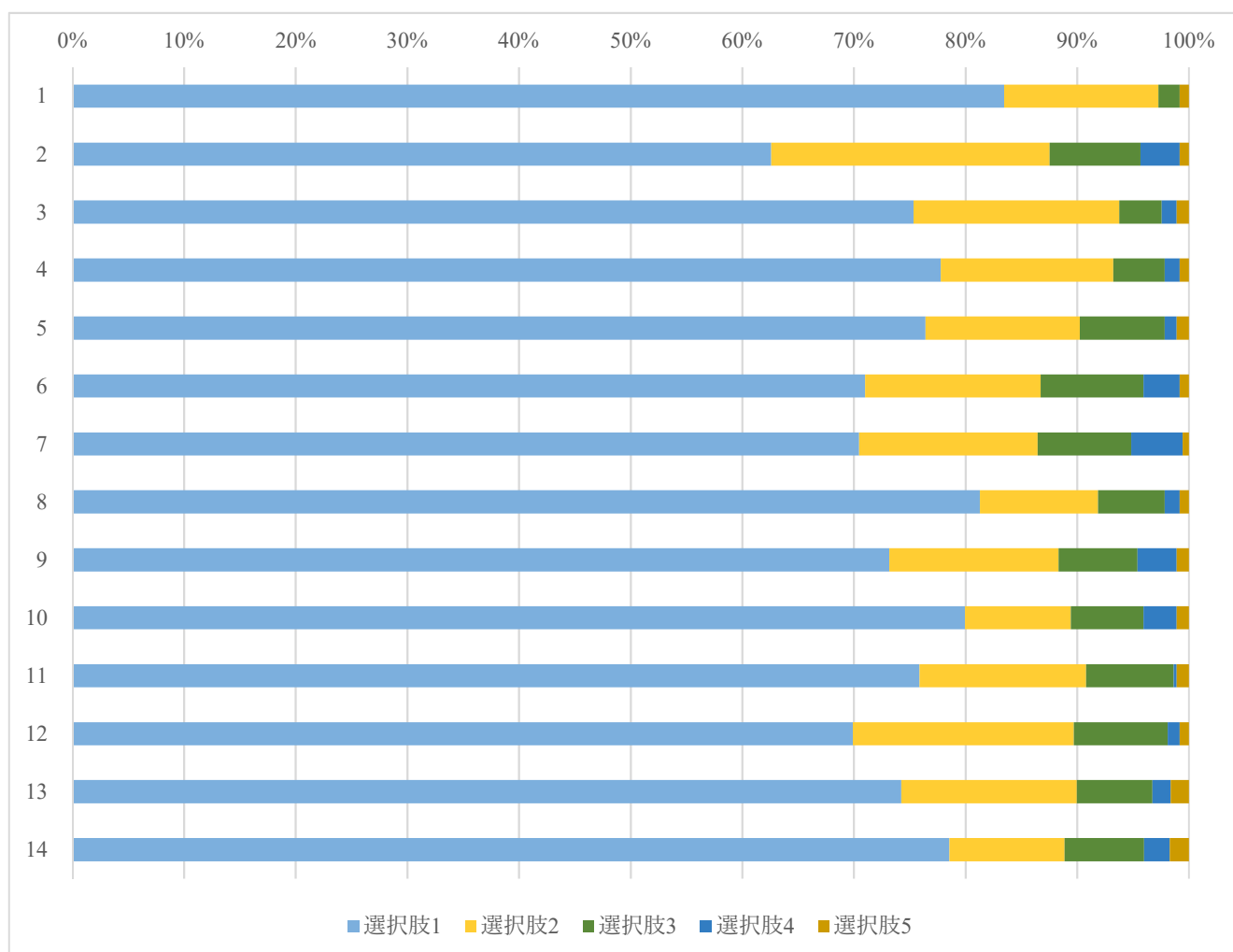
Q	選択肢 1	選択肢 2	選択肢 3	選択肢 4	選択肢 5
1	86.7%	10.0%	1.7%	0.0%	1.7%
2	65.8%	27.5%	5.0%	0.0%	1.7%
3	72.5%	18.3%	5.8%	1.7%	1.7%
4	74.2%	18.3%	4.2%	1.7%	1.7%
5	73.3%	15.0%	9.2%	0.8%	1.7%
6	65.0%	21.7%	6.7%	4.2%	2.5%
7	67.5%	17.5%	7.5%	6.7%	0.8%
8	74.2%	15.0%	7.5%	1.7%	1.7%
9	75.0%	14.2%	5.0%	3.3%	2.5%
10	80.8%	11.7%	2.5%	2.5%	2.5%
11	75.8%	12.5%	9.2%	1.7%	0.8%
12	70.8%	20.8%	5.0%	2.5%	0.8%
13	72.5%	16.7%	5.0%	3.3%	2.5%
14	74.8%	15.1%	5.9%	3.4%	0.8%





## 2.6. 総合文化コース

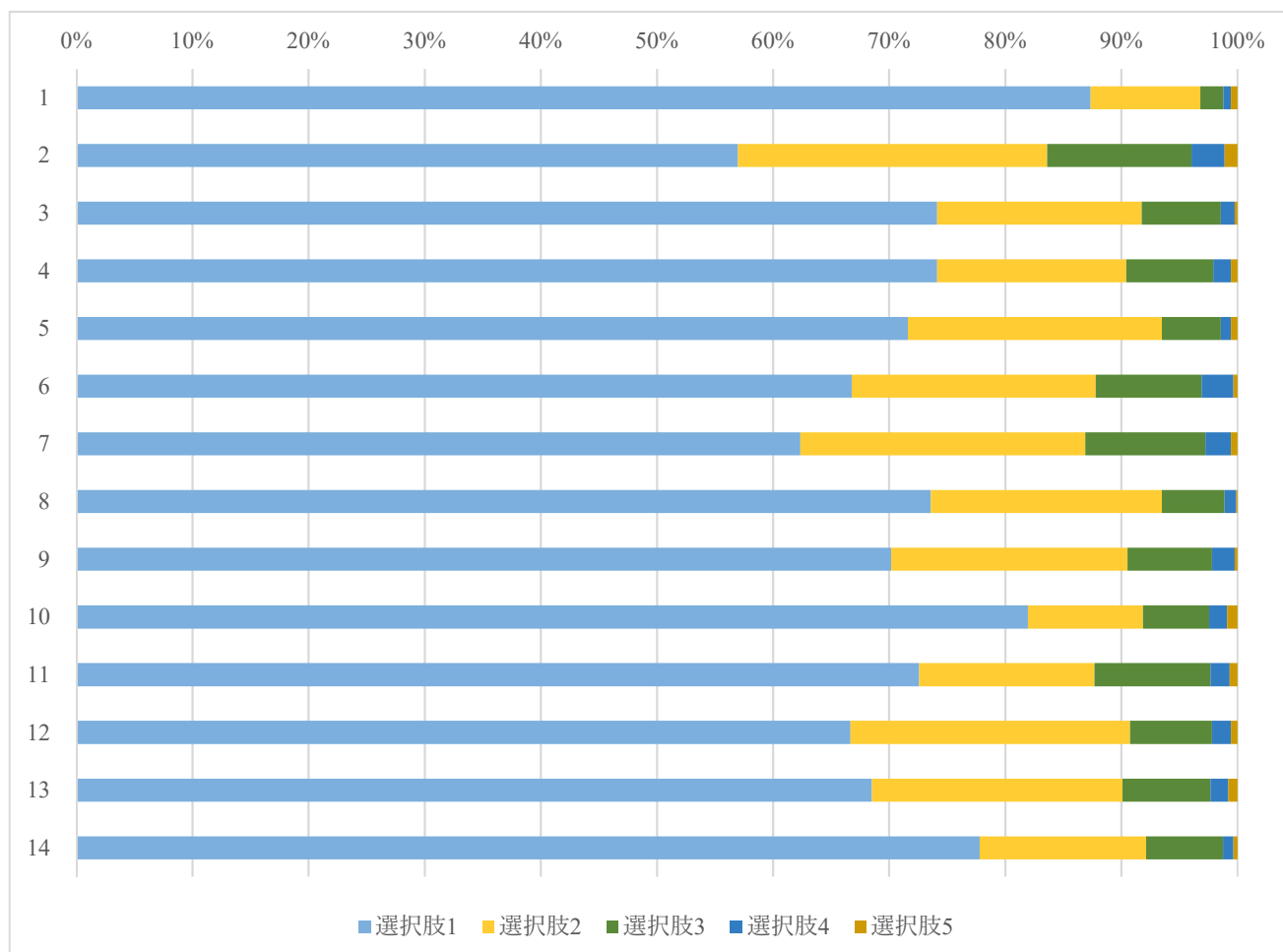
Q	選択肢 1	選択肢 2	選択肢 3	選択肢 4	選択肢 5
1	83.5%	13.8%	1.9%	0.0%	0.8%
2	62.6%	24.9%	8.1%	3.5%	0.8%
3	75.3%	18.4%	3.8%	1.4%	1.1%
4	77.8%	15.4%	4.6%	1.4%	0.8%
5	76.4%	13.8%	7.6%	1.1%	1.1%
6	71.0%	15.7%	9.2%	3.3%	0.8%
7	70.5%	16.0%	8.4%	4.6%	0.5%
8	81.3%	10.6%	6.0%	1.4%	0.8%
9	73.2%	15.2%	7.0%	3.5%	1.1%
10	79.9%	9.5%	6.5%	3.0%	1.1%
11	75.9%	14.9%	7.9%	0.3%	1.1%
12	69.9%	19.8%	8.4%	1.1%	0.8%
13	74.3%	15.7%	6.8%	1.6%	1.6%
14	78.6%	10.3%	7.1%	2.3%	1.7%



### 3. 国際社会学部

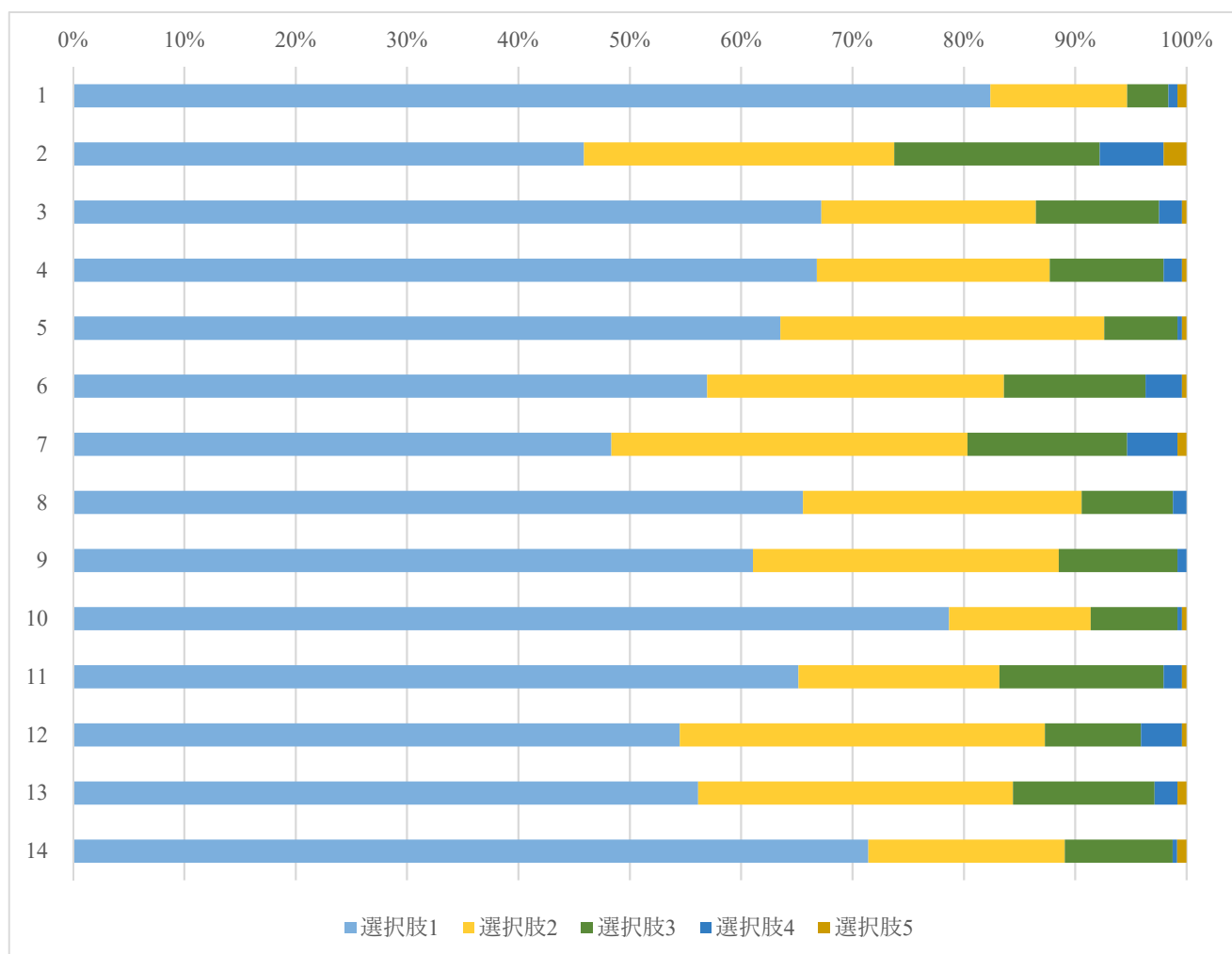
#### 3.0. 専修プログラム（全体）

Q	選択肢 1	選択肢 2	選択肢 3	選択肢 4	選択肢 5
1	87.3%	9.5%	2.0%	0.7%	0.6%
2	57.0%	26.6%	12.4%	2.9%	1.1%
3	74.1%	17.6%	6.8%	1.2%	0.2%
4	74.1%	16.3%	7.5%	1.5%	0.6%
5	71.6%	21.9%	5.1%	0.9%	0.6%
6	66.8%	21.0%	9.1%	2.8%	0.3%
7	62.4%	24.5%	10.3%	2.2%	0.6%
8	73.6%	19.9%	5.4%	1.0%	0.1%
9	70.2%	20.4%	7.3%	2.0%	0.2%
10	82.0%	9.9%	5.7%	1.5%	0.9%
11	72.6%	15.1%	10.0%	1.7%	0.7%
12	66.7%	24.1%	7.0%	1.7%	0.6%
13	68.5%	21.6%	7.6%	1.5%	0.8%
14	77.8%	14.3%	6.6%	0.9%	0.3%



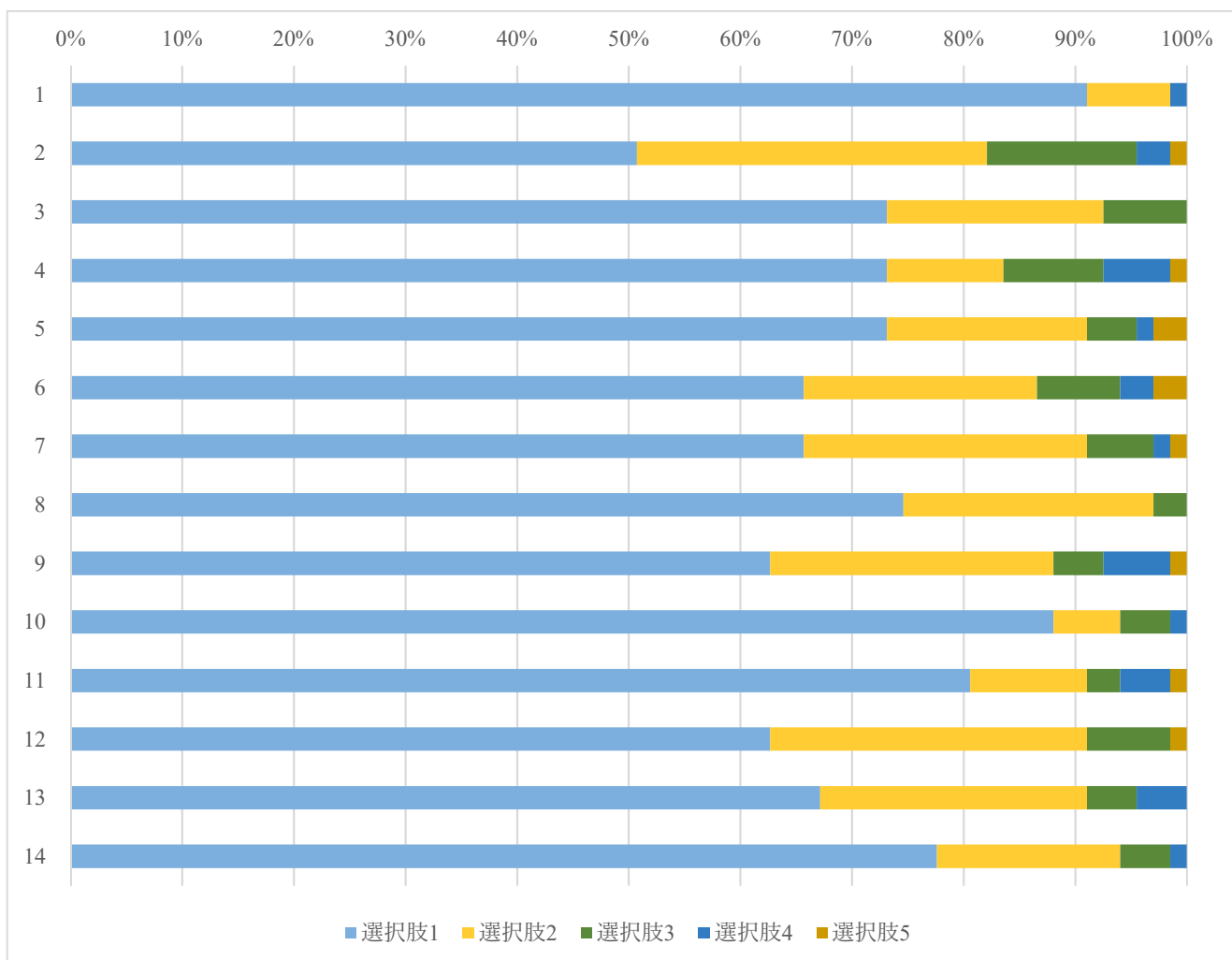
### 3.1. 導入科目

Q	選択肢 1	選択肢 2	選択肢 3	選択肢 4	選択肢 5
1	82.4%	12.3%	3.7%	0.8%	0.8%
2	45.9%	27.9%	18.4%	5.7%	2.0%
3	67.2%	19.3%	11.1%	2.0%	0.4%
4	66.8%	20.9%	10.2%	1.6%	0.4%
5	63.5%	29.1%	6.6%	0.4%	0.4%
6	57.0%	26.6%	12.7%	3.3%	0.4%
7	48.4%	32.0%	14.3%	4.5%	0.8%
8	65.6%	25.0%	8.2%	1.2%	0.0%
9	61.1%	27.5%	10.7%	0.8%	0.0%
10	78.7%	12.7%	7.8%	0.4%	0.4%
11	65.2%	18.0%	14.8%	1.6%	0.4%
12	54.5%	32.8%	8.6%	3.7%	0.4%
13	56.1%	28.3%	12.7%	2.0%	0.8%
14	71.4%	17.6%	9.7%	0.4%	0.8%



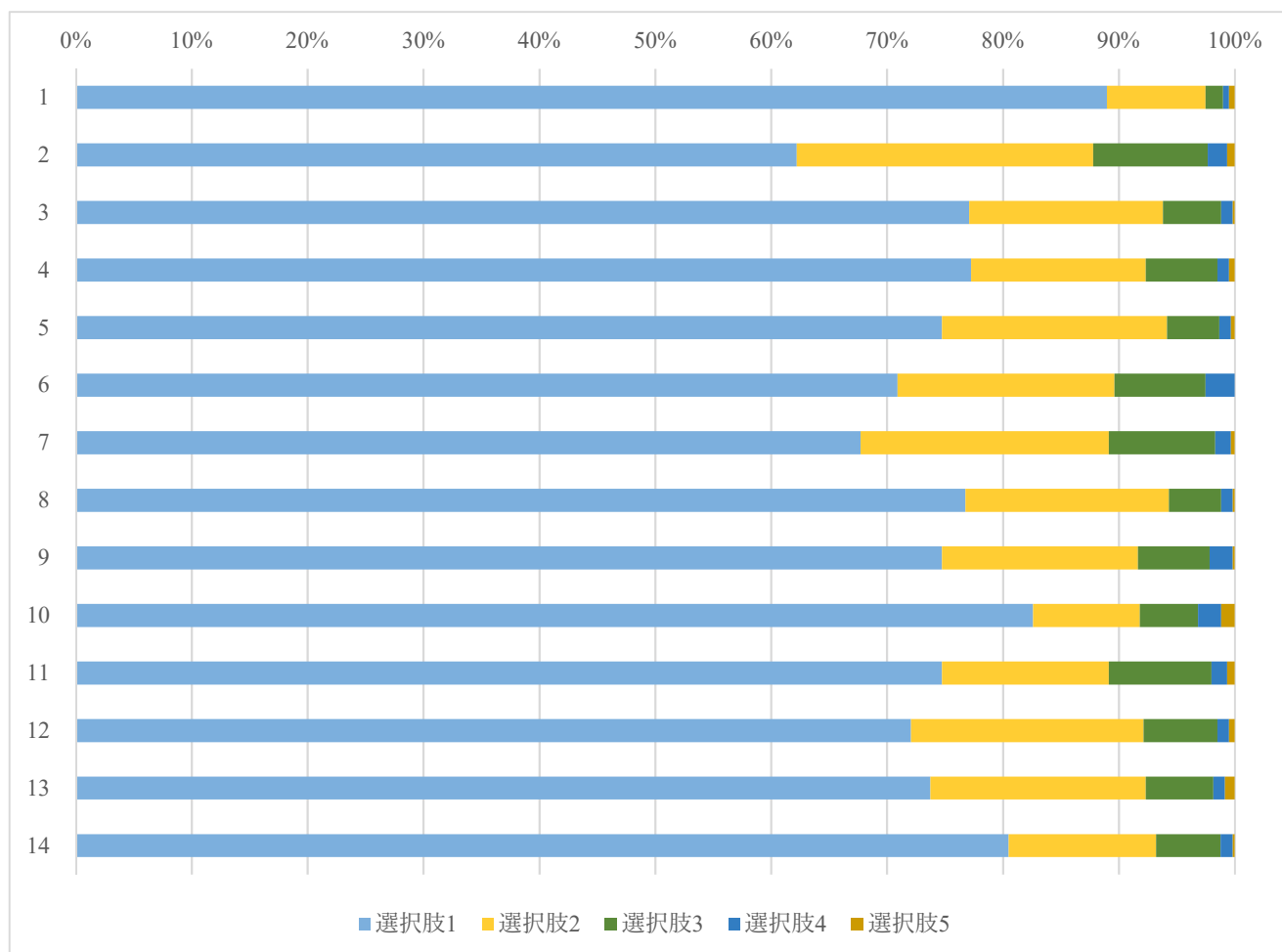
### 3.2. 概論科目

Q	選択肢 1	選択肢 2	選択肢 3	選択肢 4	選択肢 5
1	91.0%	7.5%	0.0%	1.5%	0.0%
2	50.7%	31.3%	13.4%	3.0%	1.5%
3	73.1%	19.4%	7.5%	0.0%	0.0%
4	73.1%	10.4%	9.0%	6.0%	1.5%
5	73.1%	17.9%	4.5%	1.5%	3.0%
6	65.7%	20.9%	7.5%	3.0%	3.0%
7	65.7%	25.4%	6.0%	1.5%	1.5%
8	74.6%	22.4%	3.0%	0.0%	0.0%
9	62.7%	25.4%	4.5%	6.0%	1.5%
10	88.1%	6.0%	4.5%	1.5%	0.0%
11	80.6%	10.4%	3.0%	4.5%	1.5%
12	62.7%	28.4%	7.5%	0.0%	1.5%
13	67.2%	23.9%	4.5%	4.5%	0.0%
14	77.6%	16.4%	4.5%	1.5%	0.0%



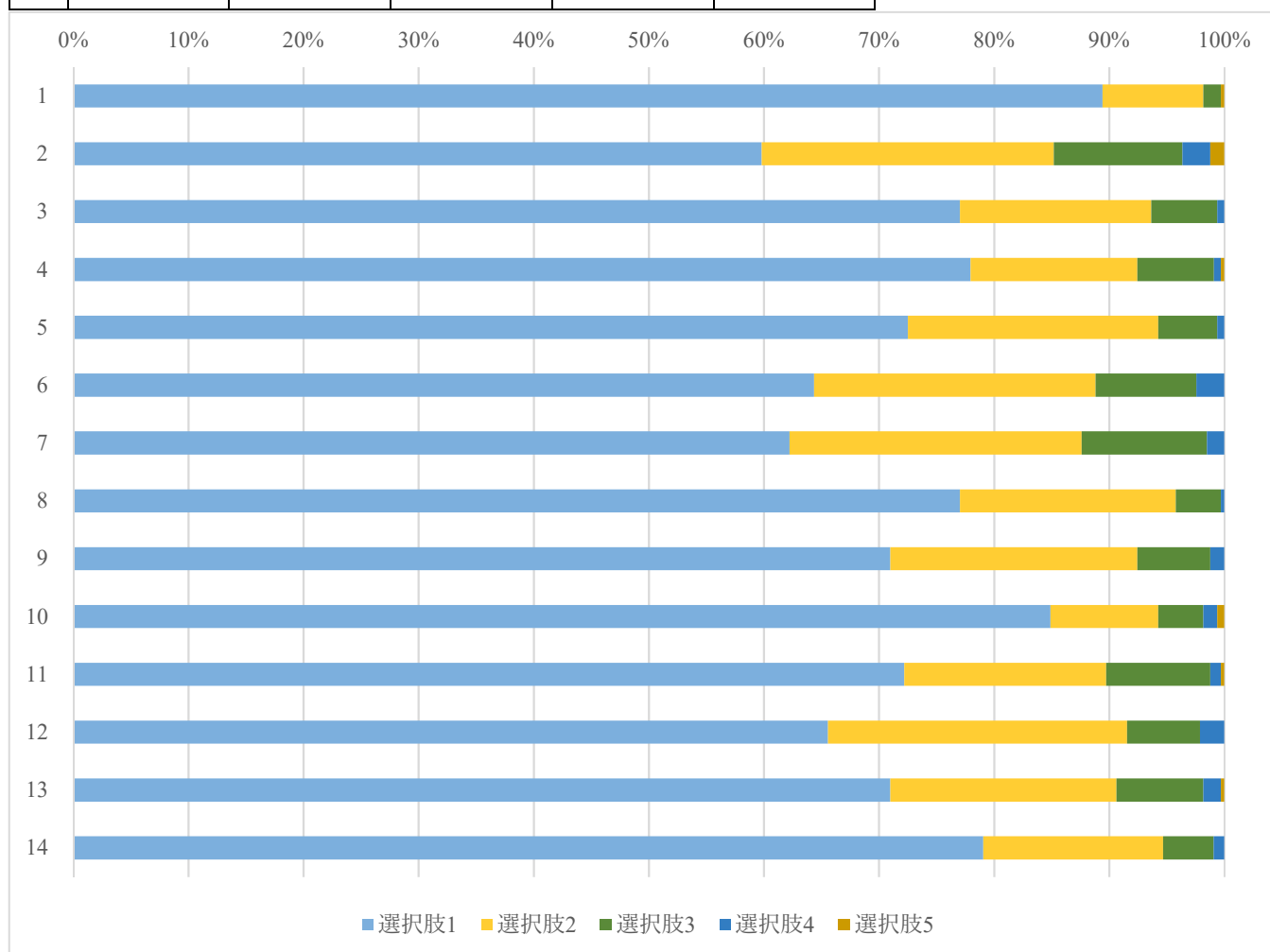
### 3.3. 選択科目

Q	選択肢 1	選択肢 2	選択肢 3	選択肢 4	選択肢 5
1	89.0%	8.5%	1.5%	0.5%	0.5%
2	62.2%	25.6%	9.9%	1.7%	0.7%
3	77.1%	16.7%	5.0%	1.0%	0.2%
4	77.3%	15.1%	6.2%	1.0%	0.5%
5	74.7%	19.4%	4.5%	1.0%	0.3%
6	70.9%	18.7%	7.9%	2.5%	0.0%
7	67.7%	21.4%	9.2%	1.3%	0.3%
8	76.8%	17.6%	4.5%	1.0%	0.2%
9	74.7%	16.9%	6.2%	2.0%	0.2%
10	82.6%	9.2%	5.0%	2.0%	1.2%
11	74.7%	14.4%	8.9%	1.3%	0.7%
12	72.1%	20.1%	6.4%	1.0%	0.5%
13	73.7%	18.6%	5.9%	1.0%	0.8%
14	80.5%	12.7%	5.6%	1.0%	0.2%



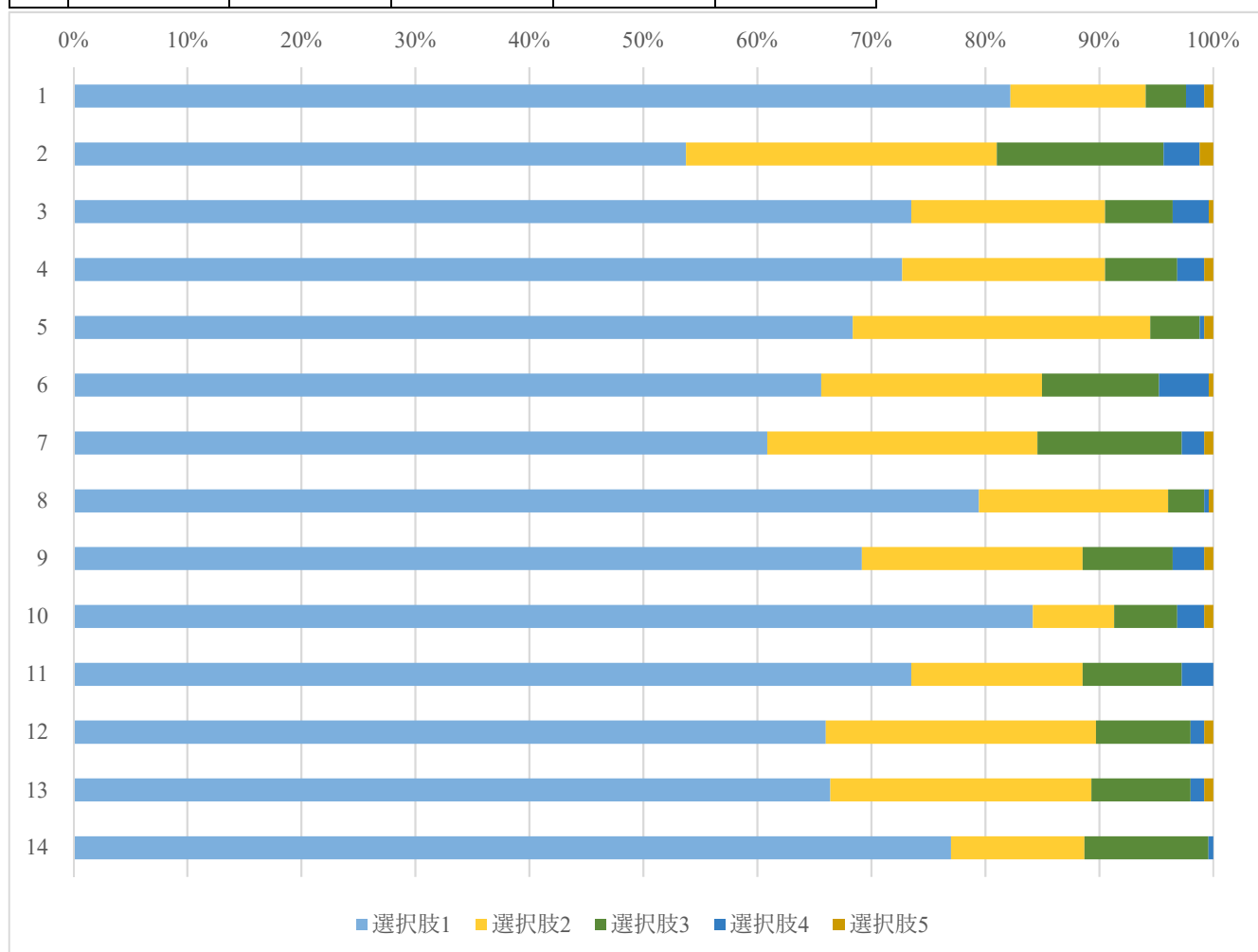
### 3.6. 地域社会研究コース

Q	選択肢 1	選択肢 2	選択肢 3	選択肢 4	選択肢 5
1	89.4%	8.8%	1.5%	0.0%	0.3%
2	59.8%	25.4%	11.2%	2.4%	1.2%
3	77.0%	16.6%	5.7%	0.6%	0.0%
4	77.9%	14.5%	6.6%	0.6%	0.3%
5	72.5%	21.8%	5.1%	0.6%	0.0%
6	64.4%	24.5%	8.8%	2.4%	0.0%
7	62.2%	25.4%	10.9%	1.5%	0.0%
8	77.0%	18.7%	3.9%	0.3%	0.0%
9	71.0%	21.5%	6.3%	1.2%	0.0%
10	84.9%	9.4%	3.9%	1.2%	0.6%
11	72.2%	17.5%	9.1%	0.9%	0.3%
12	65.6%	26.0%	6.3%	2.1%	0.0%
13	71.0%	19.6%	7.6%	1.5%	0.3%
14	79.1%	15.6%	4.4%	0.9%	0.0%



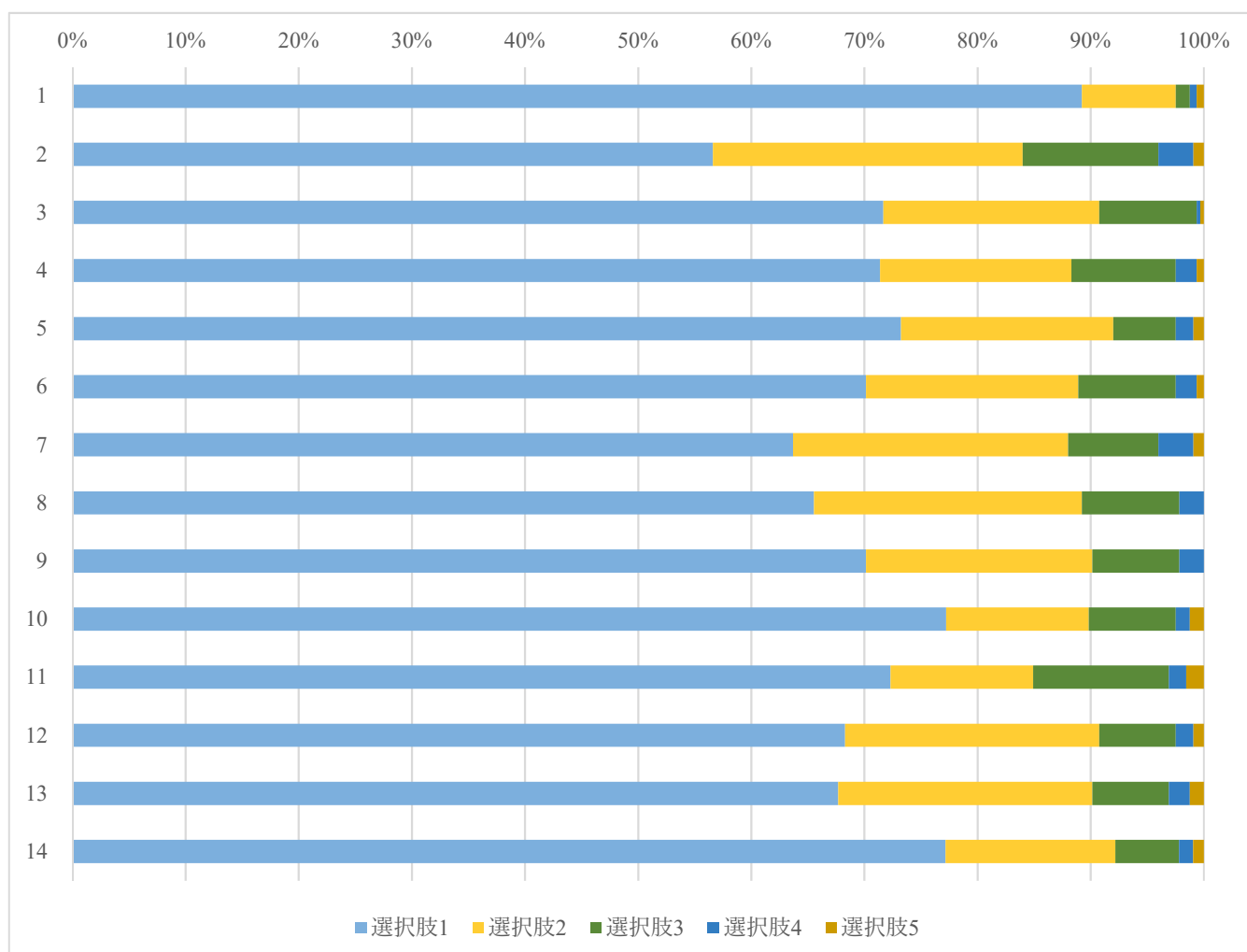
### 3.7. 現代世界論コース

Q	選択肢 1	選択肢 2	選択肢 3	選択肢 4	選択肢 5
1	82.2%	11.9%	3.6%	1.6%	0.8%
2	53.8%	27.3%	14.6%	3.2%	1.2%
3	73.5%	17.0%	5.9%	3.2%	0.4%
4	72.7%	17.8%	6.3%	2.4%	0.8%
5	68.4%	26.1%	4.3%	0.4%	0.8%
6	65.6%	19.4%	10.3%	4.3%	0.4%
7	60.9%	23.7%	12.6%	2.0%	0.8%
8	79.4%	16.6%	3.2%	0.4%	0.4%
9	69.2%	19.4%	7.9%	2.8%	0.8%
10	84.2%	7.1%	5.5%	2.4%	0.8%
11	73.5%	15.0%	8.7%	2.8%	0.0%
12	66.0%	23.7%	8.3%	1.2%	0.8%
13	66.4%	22.9%	8.7%	1.2%	0.8%
14	77.0%	11.7%	10.9%	0.4%	0.0%



### 3.8. 国際関係論コース

Q	選択肢 1	選択肢 2	選択肢 3	選択肢 4	選択肢 5
1	89.2%	8.3%	1.2%	0.6%	0.6%
2	56.6%	27.4%	12.0%	3.1%	0.9%
3	71.7%	19.1%	8.6%	0.3%	0.3%
4	71.4%	16.9%	9.2%	1.8%	0.6%
5	73.2%	18.8%	5.5%	1.5%	0.9%
6	70.2%	18.8%	8.6%	1.8%	0.6%
7	63.7%	24.3%	8.0%	3.1%	0.9%
8	65.5%	23.7%	8.6%	2.2%	0.0%
9	70.2%	20.0%	7.7%	2.2%	0.0%
10	77.2%	12.6%	7.7%	1.2%	1.2%
11	72.3%	12.6%	12.0%	1.5%	1.5%
12	68.3%	22.5%	6.8%	1.5%	0.9%
13	67.7%	22.5%	6.8%	1.8%	1.2%
14	77.2%	15.0%	5.6%	1.3%	0.9%

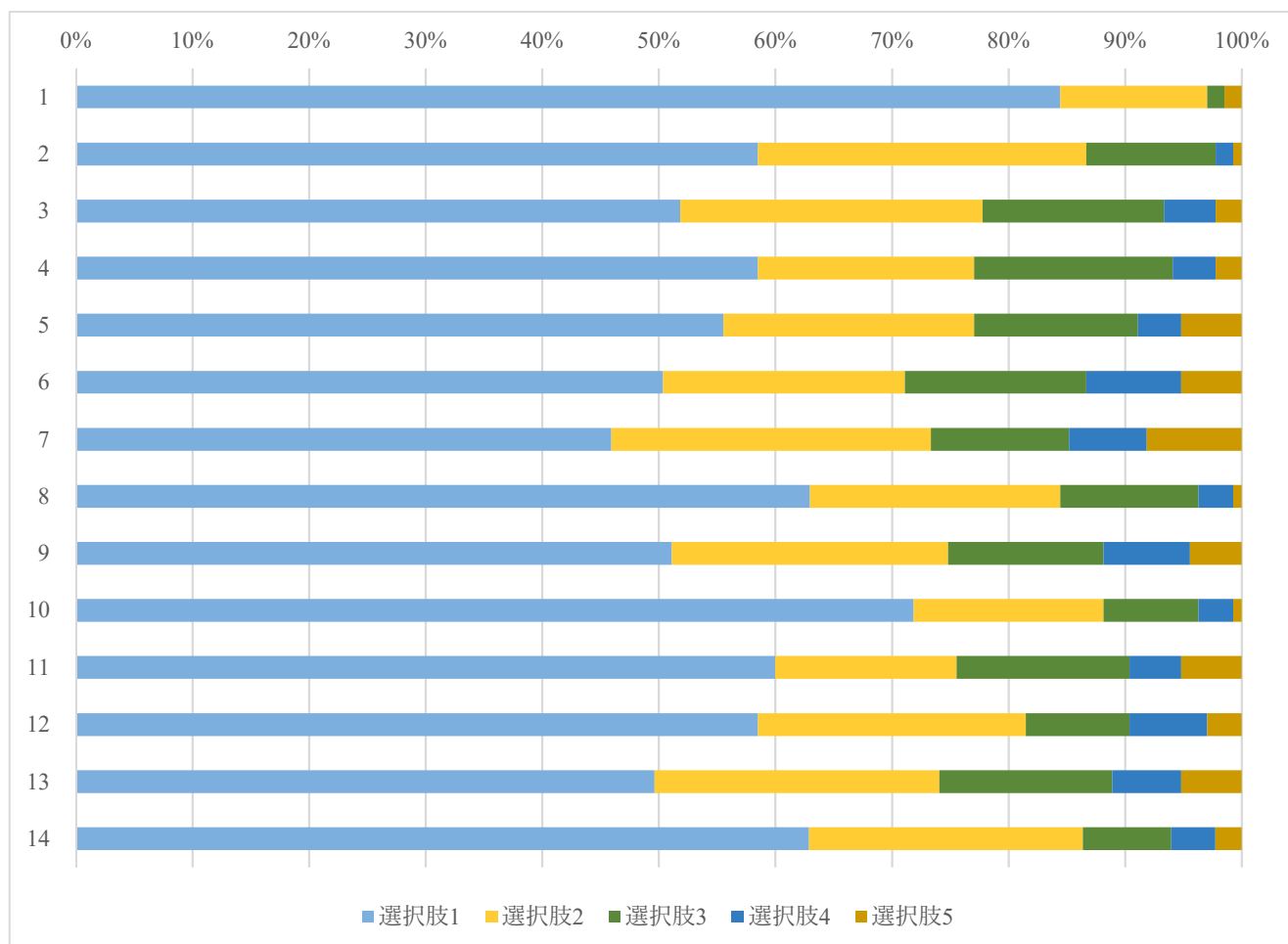




#### 4. 国際日本学部

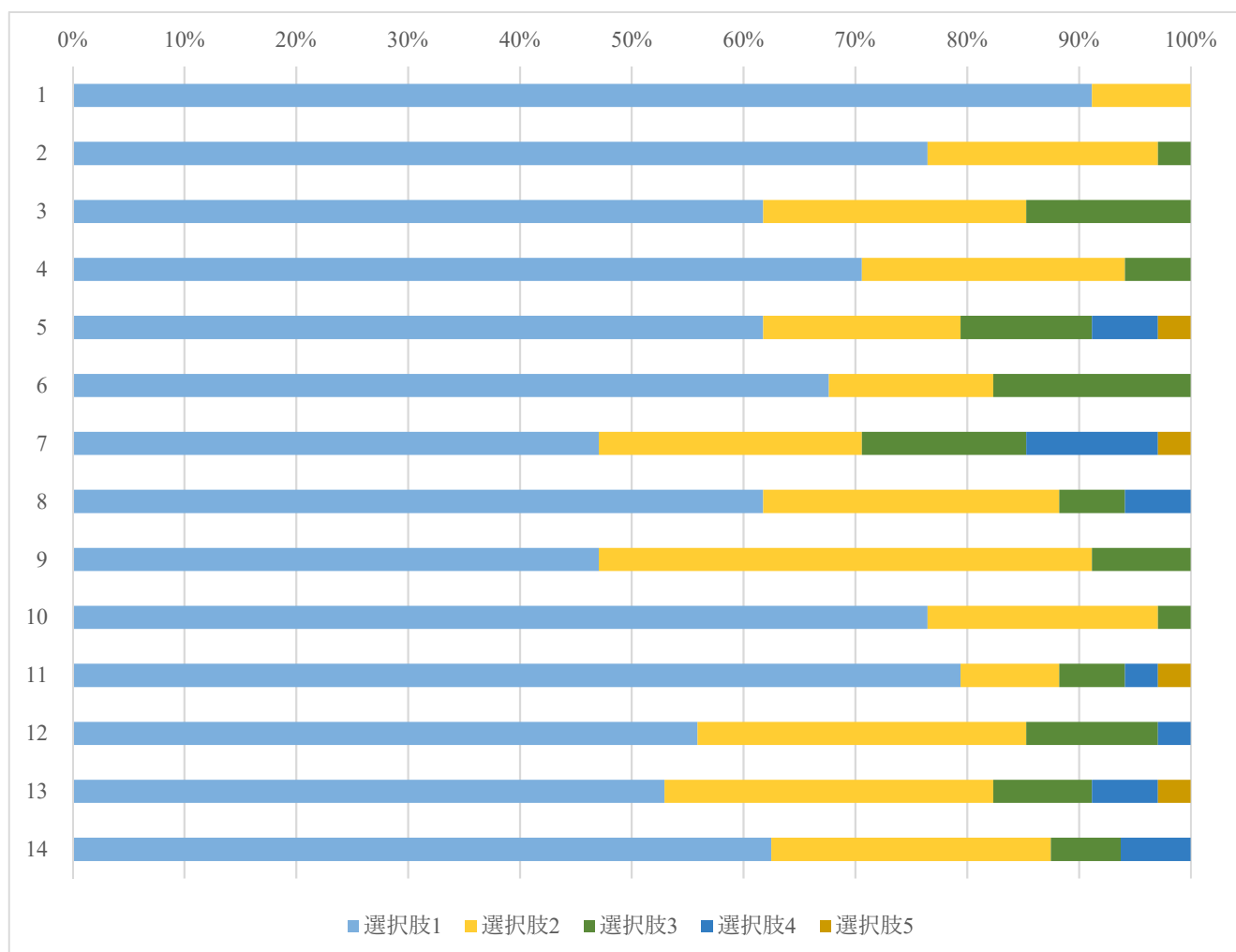
##### 4.0. 専修プログラム（全体）

Q	選択肢 1	選択肢 2	選択肢 3	選択肢 4	選択肢 5
1	84.4%	12.6%	1.5%	0.0%	1.5%
2	58.5%	28.1%	11.1%	1.5%	0.7%
3	51.9%	25.9%	15.6%	4.4%	2.2%
4	58.5%	18.5%	17.0%	3.7%	2.2%
5	55.6%	21.5%	14.1%	3.7%	5.2%
6	50.4%	20.7%	15.6%	8.1%	5.2%
7	45.9%	27.4%	11.9%	6.7%	8.1%
8	63.0%	21.5%	11.9%	3.0%	0.7%
9	51.1%	23.7%	13.3%	7.4%	4.4%
10	71.9%	16.3%	8.1%	3.0%	0.7%
11	60.0%	15.6%	14.8%	4.4%	5.2%
12	58.5%	23.0%	8.9%	6.7%	3.0%
13	49.6%	24.4%	14.8%	5.9%	5.2%
14	62.9%	23.5%	7.6%	3.8%	2.3%



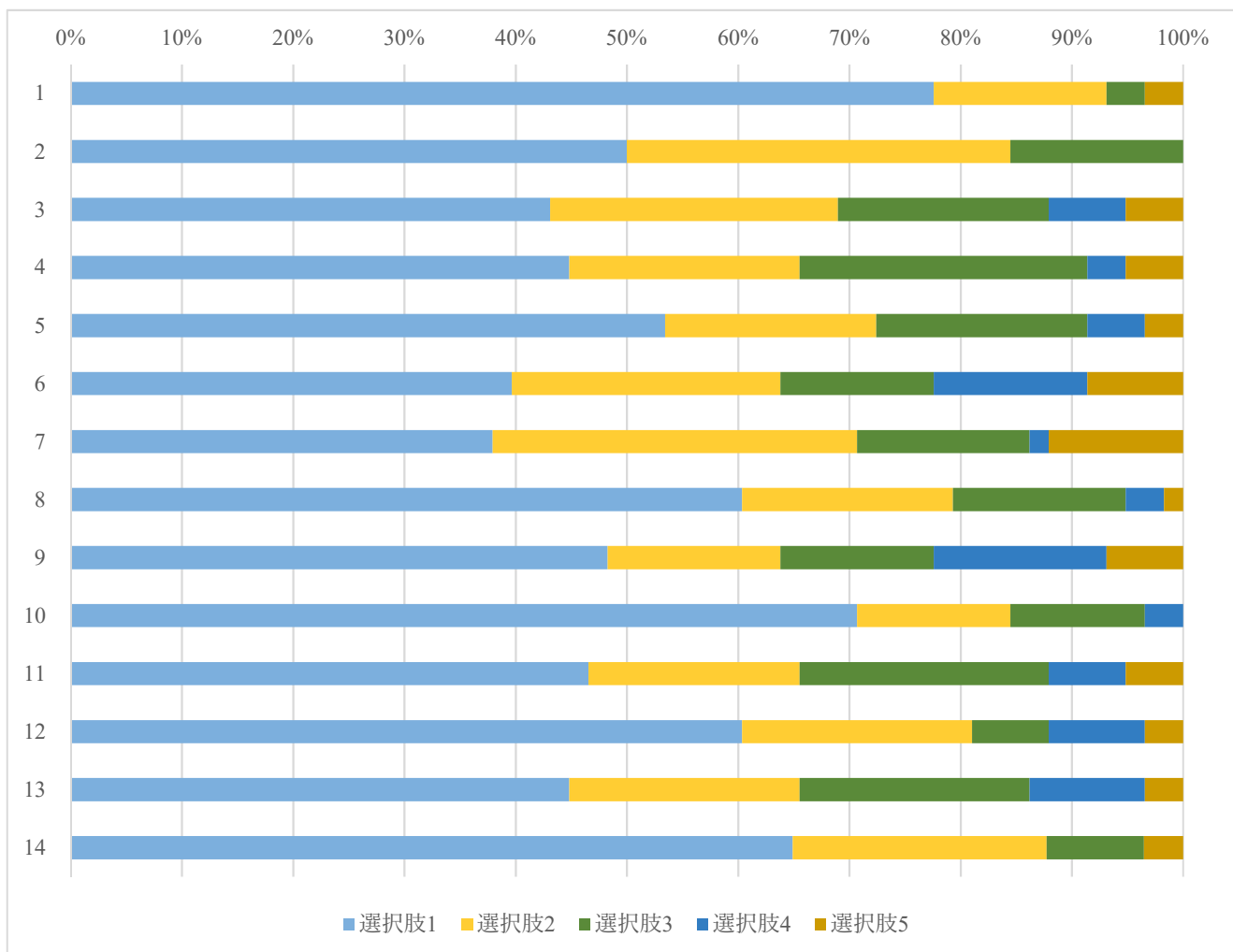
#### 4.1. 協働実践科目

Q	選択肢 1	選択肢 2	選択肢 3	選択肢 4	選択肢 5
1	91.2%	8.8%	0.0%	0.0%	0.0%
2	76.5%	20.6%	2.9%	0.0%	0.0%
3	61.8%	23.5%	14.7%	0.0%	0.0%
4	70.6%	23.5%	5.9%	0.0%	0.0%
5	61.8%	17.6%	11.8%	5.9%	2.9%
6	67.6%	14.7%	17.6%	0.0%	0.0%
7	47.1%	23.5%	14.7%	11.8%	2.9%
8	61.8%	26.5%	5.9%	5.9%	0.0%
9	47.1%	44.1%	8.8%	0.0%	0.0%
10	76.5%	20.6%	2.9%	0.0%	0.0%
11	79.4%	8.8%	5.9%	2.9%	2.9%
12	55.9%	29.4%	11.8%	2.9%	0.0%
13	52.9%	29.4%	8.8%	5.9%	2.9%
14	62.5%	25.0%	6.3%	6.3%	0.0%



#### 4.2. 導入科目

Q	選択肢 1	選択肢 2	選択肢 3	選択肢 4	選択肢 5
1	77.6%	15.5%	3.4%	0.0%	3.4%
2	50.0%	34.5%	15.5%	0.0%	0.0%
3	43.1%	25.9%	19.0%	6.9%	5.2%
4	44.8%	20.7%	25.9%	3.4%	5.2%
5	53.4%	19.0%	19.0%	5.2%	3.4%
6	39.7%	24.1%	13.8%	13.8%	8.6%
7	37.9%	32.8%	15.5%	1.7%	12.1%
8	60.3%	19.0%	15.5%	3.4%	1.7%
9	48.3%	15.5%	13.8%	15.5%	6.9%
10	70.7%	13.8%	12.1%	3.4%	0.0%
11	46.6%	19.0%	22.4%	6.9%	5.2%
12	60.3%	20.7%	6.9%	8.6%	3.4%
13	44.8%	20.7%	20.7%	10.3%	3.4%
14	64.9%	22.8%	8.8%	0.0%	3.5%



### 4.3. 概論科目

Q	選択肢 1	選択肢 2	選択肢 3	選択肢 4	選択肢 5
1	88.4%	11.6%	0.0%	0.0%	0.0%
2	55.8%	25.6%	11.6%	4.7%	2.3%
3	55.8%	27.9%	11.6%	4.7%	0.0%
4	67.4%	11.6%	14.0%	7.0%	0.0%
5	53.5%	27.9%	9.3%	0.0%	9.3%
6	51.2%	20.9%	16.3%	7.0%	4.7%
7	55.8%	23.3%	4.7%	9.3%	7.0%
8	67.4%	20.9%	11.6%	0.0%	0.0%
9	58.1%	18.6%	16.3%	2.3%	4.7%
10	69.8%	16.3%	7.0%	4.7%	2.3%
11	62.8%	16.3%	11.6%	2.3%	7.0%
12	58.1%	20.9%	9.3%	7.0%	4.7%
13	53.5%	25.6%	11.6%	0.0%	9.3%
14	60.5%	23.3%	7.0%	7.0%	2.3%

